

CRAWFORD STREET, W1H
TOTAL APPROX. FLOOR PLAN AREA 687 SQ.FT. (63.8 SQ.M.)
FIRST FLOOR



Energy Efficiency Rating

	Current	Potential
Very energy efficient - lower running costs		
(92 plus) A		
(81-91) B		
(69-80) C		
(55-68) D		
(39-54) E		
(21-38) F		
(1-20) G		
Not energy efficient - higher running costs		
	60	77
England & Wales	EU Directive 2002/91/EC	

Environmental Impact (CO₂) Rating

	Current	Potential
Very environmentally friendly - lower CO ₂ emissions		
(92 plus) A		
(81-91) B		
(69-80) C		
(55-68) D		
(39-54) E		
(21-38) F		
(1-20) G		
Not environmentally friendly - higher CO ₂ emissions		
	57	79
England & Wales	EU Directive 2002/91/EC	

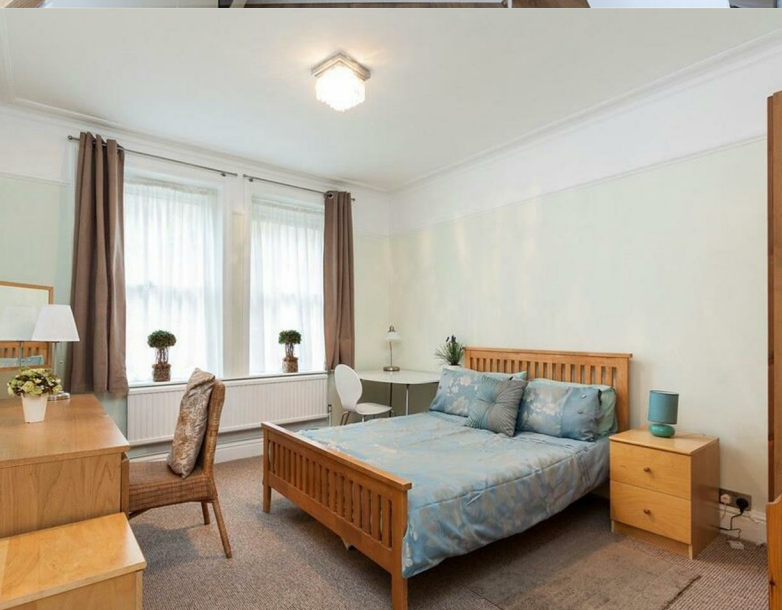


Crawford Street, Marylebone, W1H 4JU

£2,773 Per Month

Subject to Contract

- Two double bedrooms
- Contemporary white lacquered kitchen
- Entry-phone access
- Timber style floors in reception room
- Fully tiled bathroom



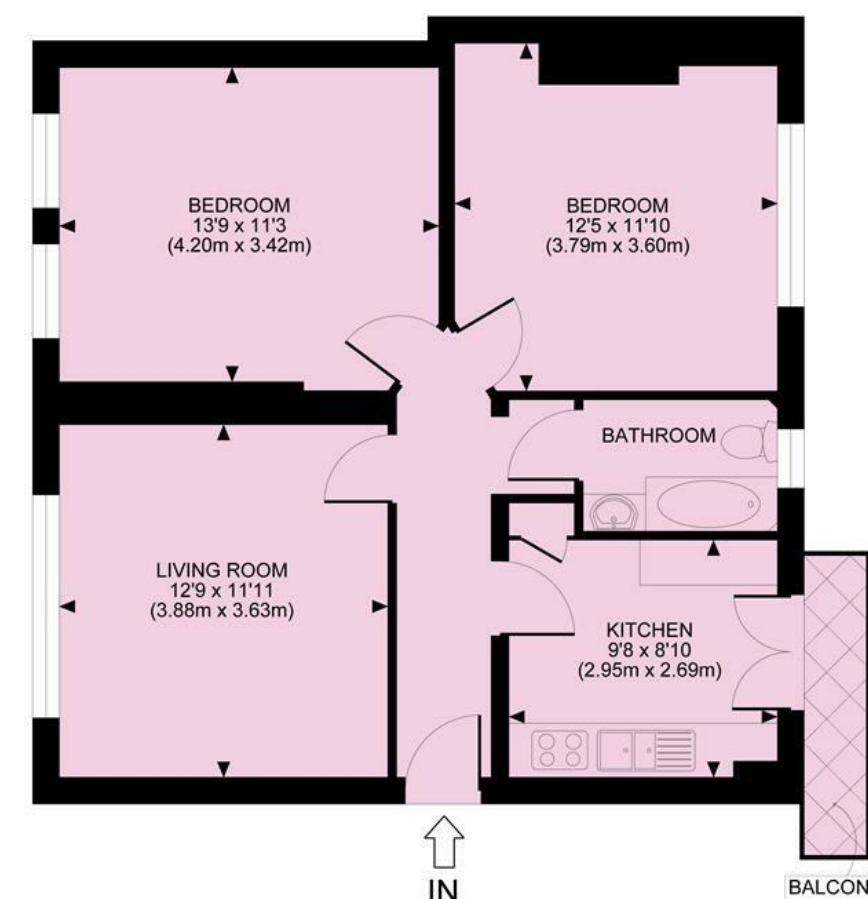
Crawford Street, W1H 4JU

T.S. Elliot's "The Naming of Cats", lived here between 1916 - 1920... well proportioned two double bedroom apartment on raised ground floor of this impressive red brick Mansion block, in the heart of London, with a neutral interior, comprising of an ultra-modern fully integrated white lacquered kitchen, fully tiled bathroom, and located moments from Baker Street and Marble Arch.

Crawford Street is ideally situated close to an abundance of amenities on Baker/Paddington Streets, while the comprehensive facilities of the West End are just a short distance away.



CRAWFORD STREET, W1H
TOTAL APPROX. FLOOR PLAN AREA 687 SQ.FT. (63.8 SQ.M.)
FIRST FLOOR



All measurements walls, doors, windows, fittings and their appliances, their size and locations are shown conventionally and are approximate only and cannot be regarded as being a representation either by the seller or his agent nor zentuvo
www.zentuvo.co.uk

Tenure

Price £2,773 Per Month Subject to Contract

Viewing by appointment , through joint sole agents Warwick Estate Agents



Tel: +44 (0)2 8960 9988
Fax: +44 (0)2 8960 9989

Email: mail@warwickestateagency.co.uk
warwickestateagents.tv | warwickestateagents.co.uk

69 Chamerlayne Road, London NW10 3ND
Tel: +44 (0)20 8960 9988 **Fax:** +44 (0)20 8960 9989