

Energy Efficiency Rating	
Current	Potential
Very energy efficient - lower running costs	
(92 plus) A	70
(81-91) B	
(69-80) C	
(55-68) D	
(39-54) E	
(21-38) F	
(1-20) G	
58	

Environmental Impact (CO ₂) Rating	
Current	Potential
Very environmentally friendly - lower CO ₂ emissions	
(92 plus) A	59
(81-91) B	
(69-80) C	
(55-68) D	
(39-54) E	
(21-38) F	
(1-20) G	
51	

Keslake Road, Queens Park, NW6 6DH

£2,850 PCM

Subject to Contract

- Three bedrooms
- Newly fitted eat in kitchen
- Newly fitted en suite bathroom
- Full width reception room
- Newly fitted family bathroom
- Solidwood flooring

We have endeavoured to supply this information as accurate as possible. Before making an offer, buying or renting this property please seek independent or professional advice.



Tel: +44 (0)2 8960 9988
Fax: +44 (0)2 8960 9989

Email: mail@warwickstateagency.co.uk
warwickstateagents.tv | warwickstateagents.co.uk

69 Chamberlayne Road, London NW10 3ND
Tel: +44 (0)20 8960 9988 Fax: +44 (0)20 8960 9989



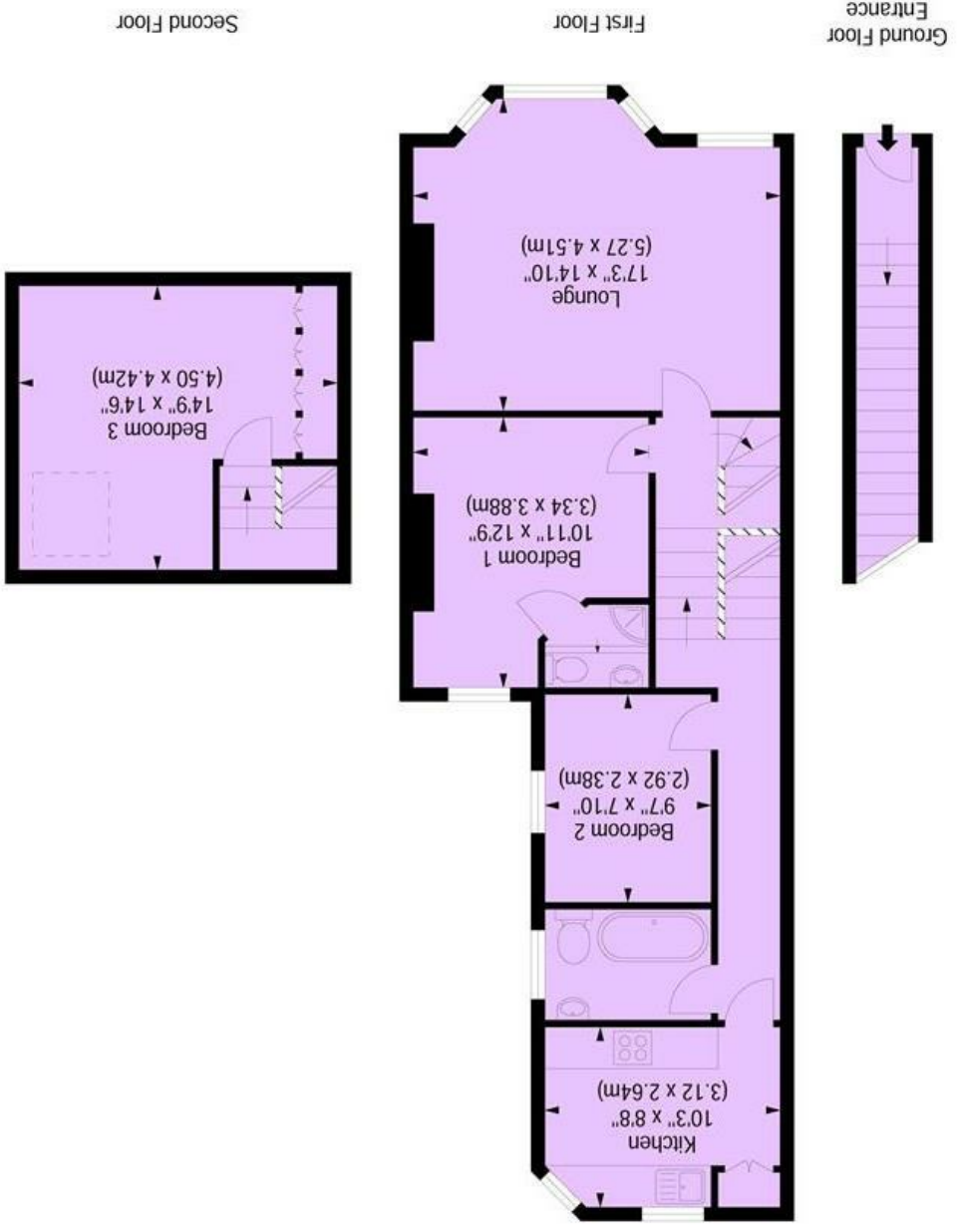
Keslake Road, NW6 6DH

Imposing residential tree-lined no-through street in Queens Park... well proportioned three bedroom first & second-floor maisonette. This stunning apartment comprises of large full-width reception room with wooden floors into bay window, two double bedrooms, one of which has an en-suite bathroom, one further bedroom and family bathroom, well designed eat-in kitchen with integrated appliances, only a stones throw of the local amenities.

Keslake Road is located on a no-through residential street, off the buzzing, trendy metropolis known as Chamberlayne Road where an enviable selection of shops, bars, and restaurants can be found, recently voted the 'Best Street in North London' by Vogue magazine. A road that, according to Vogue "oozes with local character, vintage stores, and bars.

Available 29th August

Keslake Road, NW6
Approximate Gross Internal Area 995 sq ft / 92.44 sq m



Disclaimer : Floor plan measurements are approximate and are for illustrative purposes only. While we do not doubt the floor plan accuracy and completeness, you or your advisors should conduct a careful, independent investigation of the property in respect of monetary valuation



Tel: +44 (0)2 8960 9988
Fax: +44 (0)2 8960 9989

Email: mail@warwickestateagency.co.uk
warwickestateagents.tv | warwickestateagents.co.uk

69 Chamberlayne Road, London NW10 3ND
Tel: +44 (0)20 8960 9988 Fax: +44 (0)20 8960 9989