

Energy Efficiency Rating	
Current	Potential
Very energy efficient - lower running costs	
(92 plus) A	75
(81-91) B	
(69-80) C	
(55-68) D	
(39-54) E	
(21-38) F	
(1-20) G	
63	

Environmental Impact (CO ₂) Rating	
Current	Potential
Very environmentally friendly - lower CO ₂ emissions	
(92 plus) A	74
(81-91) B	
(69-80) C	
(55-68) D	
(39-54) E	
(21-38) F	
(1-20) G	
57	

Holland Road, Kensal, NW10 5AU

£2,275 PCM

Subject to Contract

- High ceilings with period mouldings in reception room
- Sunny private rear garden
- Two double bedrooms
- Separate kitchen
- Timber floors

We have endeavoured to supply this information as accurate as possible. Before making an offer, buying or renting this property please seek independent or professional advice.



Tel: +44 (0)2 8960 9988
Fax: +44 (0)2 8960 9989

Email: mail@warwickstateagency.co.uk
warwickstateagents.tv | warwickstateagents.co.uk

69 Chamberlayne Road, London NW10 3ND
Tel: +44 (0)20 8960 9988 Fax: +44 (0)20 8960 9989



Holland Road, NW10 5AU

Unique, generously sized... timber floored two double bedroomed apartment with a south/westerly facing private rear garden, and some imposing period features enhanced by high ceilings. On the ground floor of this impressive end-terraced house, in a broad attractive road.

The property offers 892 sq ft of living/entertaining space, with French doors leading out to the private rear garden from a large reception, a fully tiled bathroom, and a fitted kitchen.

Holland Road in close proximity to Kensal Green Station (Bakerloo & Overground Services) and Kensal Rise Overground out of Central London and within easy reach of the shops, bars, and restaurants along with the green open spaces of Elmwood Park and Elmwood Lawn Tennis Club.

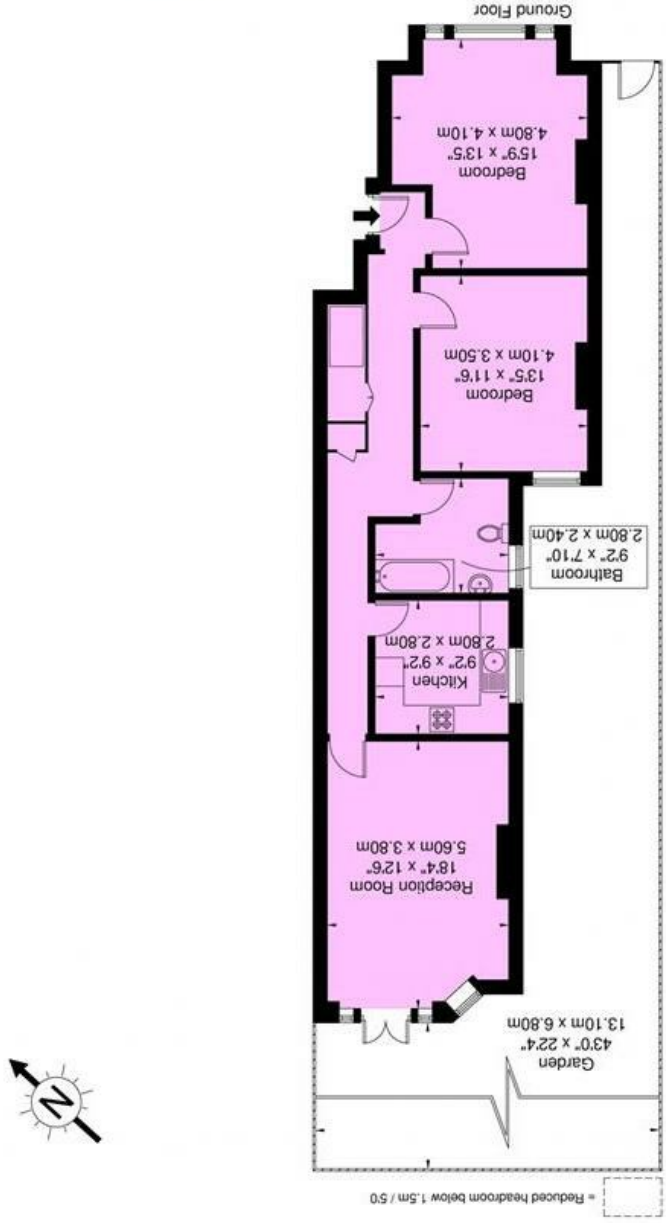
Available 25th July



Tel: +44 (0)2 8960 9988
Fax: +44 (0)2 8960 9989

Holland Road, NW10

Approx. Gross Internal Area = 82.9 sq m / 892 sq ft



Copyright THEBLEUPLAN

Disclaimer : Floor plan measurements are approximate and are for illustrative purposes only While we do not doubt the floor plan accuracy and completeness, you or your advisors should conduct a careful, independent investigation of the property in respect of monetary valuation

Email: mail@warwickestateagency.co.uk

warwickestateagents.tv | warwickestateagents.co.uk

69 Chamberlayne Road, London NW10 3ND
Tel: +44 (0)20 8960 9988 Fax: +44 (0)20 8960 9989