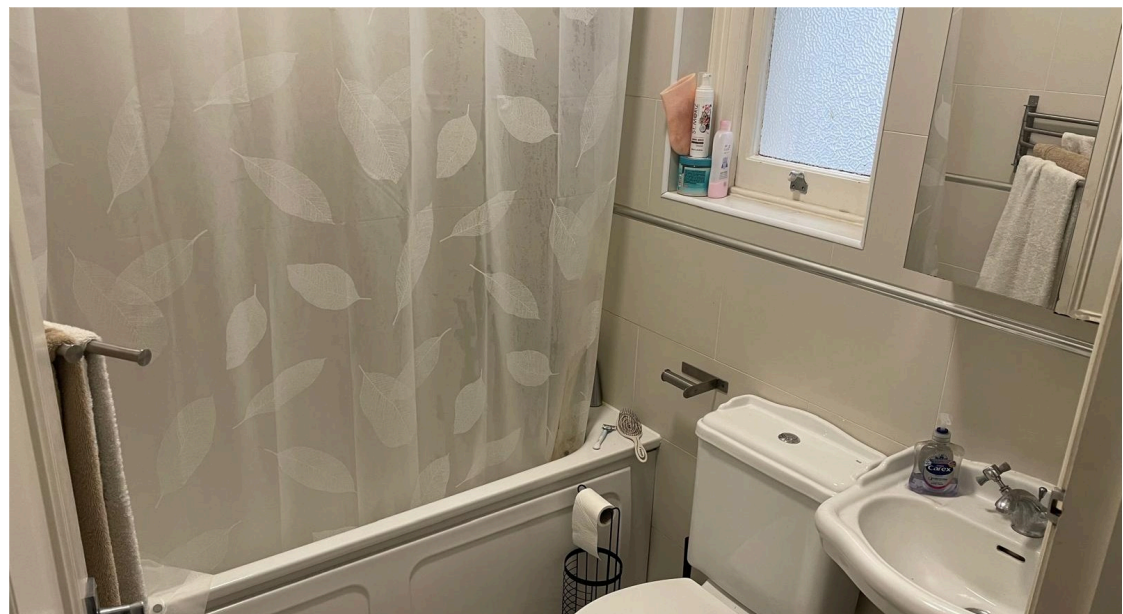
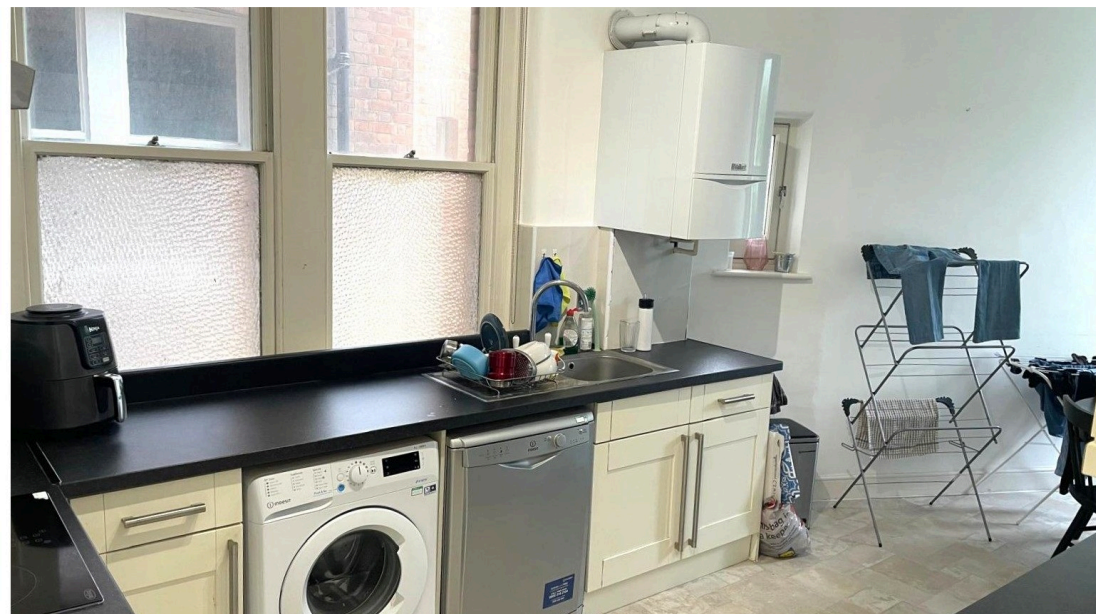
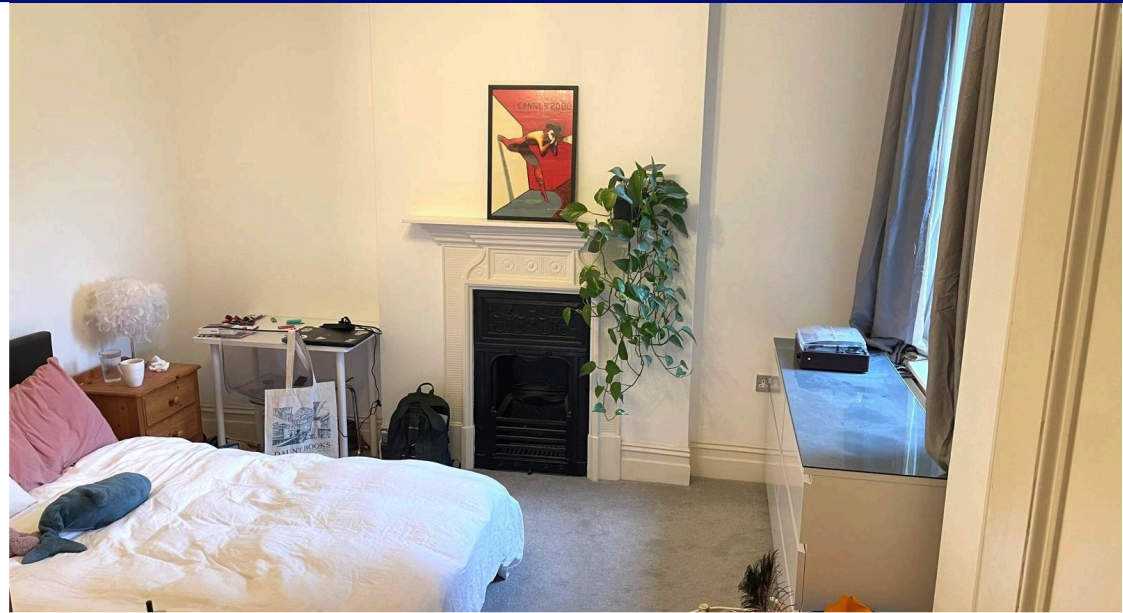




 **3**
Bedrooms

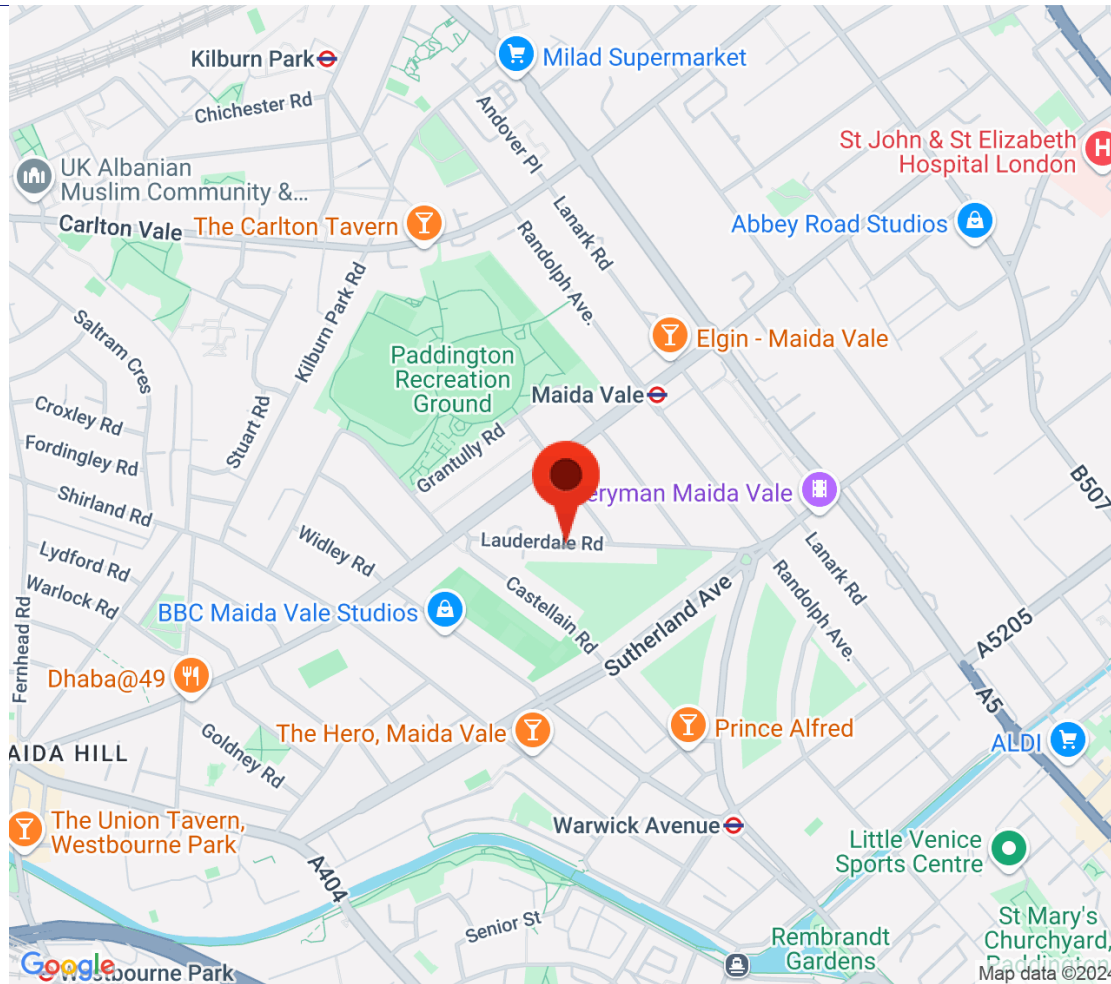
 **2**
Bathrooms



Warren Bradley Estates are delighted to offer for rent this extremely spacious three bedroom 1st floor apartment within a popular mansion block located in a prime central London location close to Maida Vale tube station and all the other fantastic local amenities the area has to offer.

The property internally has 3 large bedrooms, a bright and airy lounge, two bathrooms (1 ensuite), a spacious kitchen, period features, gas central heating, security intercom system and on-site porter.

Offered unfurnished the property is available on the 1st November 2024.



Energy Efficiency Rating		
	Current	Potential
Very energy efficient - lower running costs		
(92+) A		
(81-91) B		83
(69-80) C	72	
(55-68) D		
(39-54) E		
(21-38) F		
(1-20) G		
Not energy efficient - higher running costs		
England, Scotland & Wales		
	EU Directive 2002/91/EC	

Address: Lauderdale Road, Maida Vale

