



 **3**  
Bedrooms

 **2**  
Bathrooms

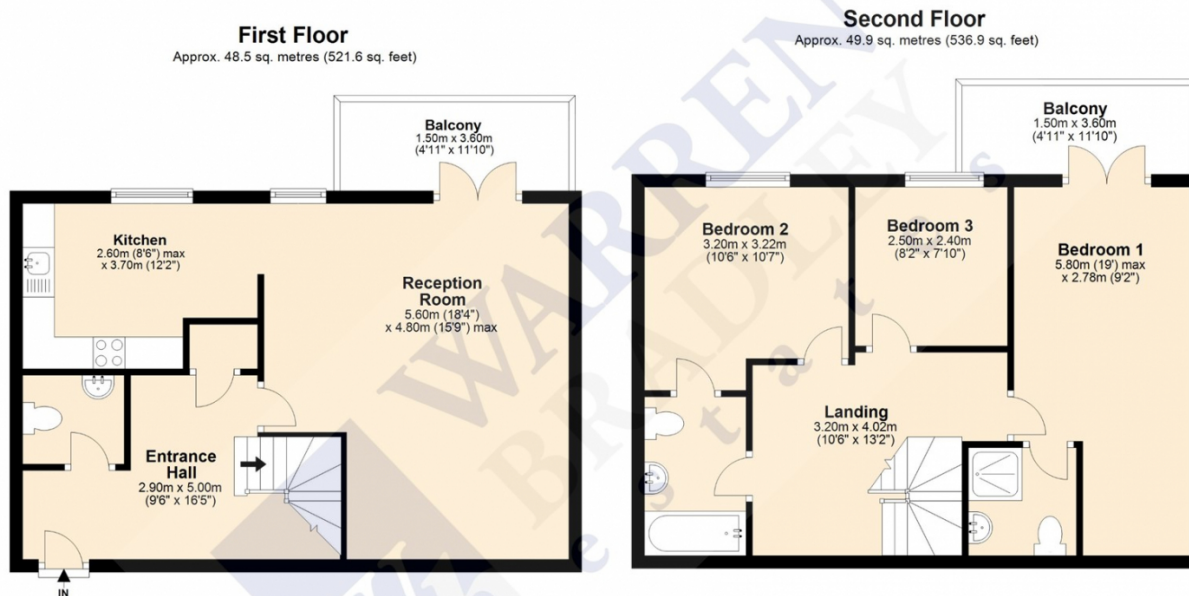


We are delighted to offer for rent this newly redecorated three bedroom duplex (2 floors) apartment located in the Pulse Development.

The property benefits from two bathrooms (1 En-Suite) and an additional WC, large lounge with spacious balcony and a fully fitted kitchen. The main bedroom also has a balcony. This property also comes with an allocated parking space within the secure underground car park.


Located close to Colindale Station, local parks and numerous restaurants and coffee shops.

Offered furnished or unfurnished the property is available now.



Total area: approx. 98.3 sq. metres (1058.5 sq. feet)

Disclaimer: Please note this floor plan is for marketing purposes and is to be used as a guide only.  
Plan produced using PlanUp.

Energy Efficiency Rating		
	Current	Potential
Very energy efficient - lower running costs		
(92+) <b>A</b>		
(81-91) <b>B</b>	<b>83</b>	<b>83</b>
(69-80) <b>C</b>		
(55-68) <b>D</b>		
(39-54) <b>E</b>		
(21-38) <b>F</b>		
(1-20) <b>G</b>		
Not energy efficient - higher running costs		
England, Scotland & Wales		EU Directive 2002/91/EC 

Address: Joslin Avenue, Colindale

