



 0  
Bedroom

 1  
Bathroom

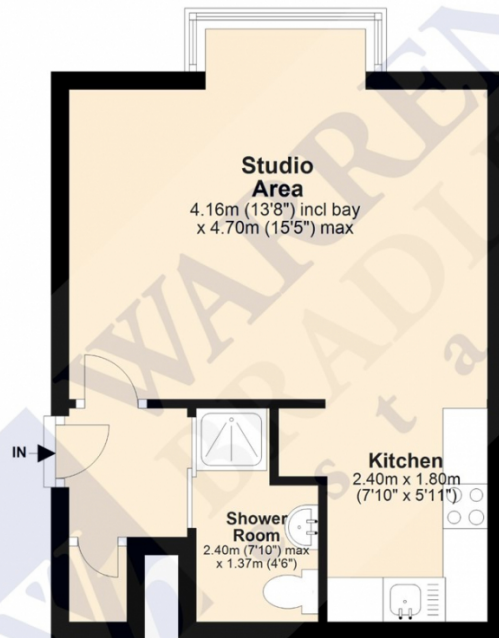


**Warren Bradley Estates are pleased to offer this large purpose built modern studio apartment which is offered in good condition and benefits from a fully equipped kitchen, economy 7 heating system, shower room and off street parking. The property is offered fully furnished and is available 01st October 2024.**



**Bradman Row**

Approx. 28.2 sq. metres (303.9 sq. feet)



Total area: approx. 28.2 sq. metres (303.9 sq. feet)

Disclaimer: Please note this floor plan is for marketing purposes and is to be used as a guide only.  
Plan produced using PlanUp.

Energy Efficiency Rating		Current	Potential
Very energy efficient - lower running costs			
(92-100) <b>A</b>			
(81-91) <b>B</b>			
(69-80) <b>C</b>			
(55-68) <b>D</b>			
(39-54) <b>E</b>			
(21-38) <b>F</b>			
(1-20) <b>G</b>			
Not energy efficient - higher running costs			
		64	80
England, Scotland & Wales		EU Directive 2002/91/EC	

Environmental Impact (CO <sub>2</sub> ) Rating		Current	Potential
Very environmentally friendly - lower CO <sub>2</sub> emissions			
(92-100) <b>A</b>			
(81-91) <b>B</b>			
(69-80) <b>C</b>			
(55-68) <b>D</b>			
(39-54) <b>E</b>			
(21-38) <b>F</b>			
(1-20) <b>G</b>			
Not environmentally friendly - higher CO <sub>2</sub> emissions			
		45	80
England, Scotland & Wales		EU Directive 2002/91/EC	

