



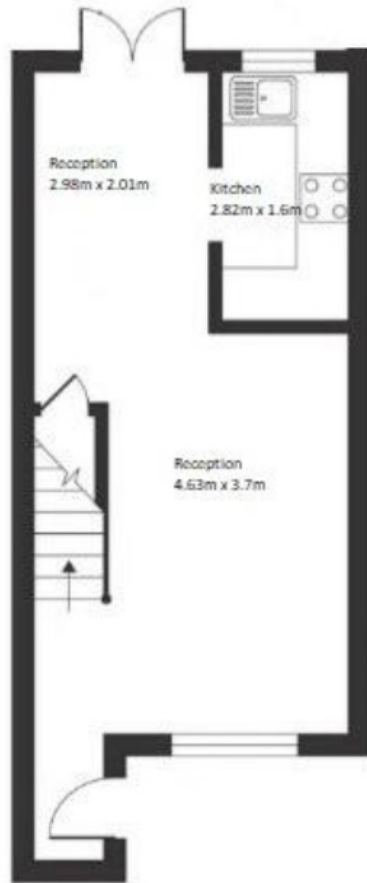
 **2**  
Bedrooms

 **1**  
Bathroom

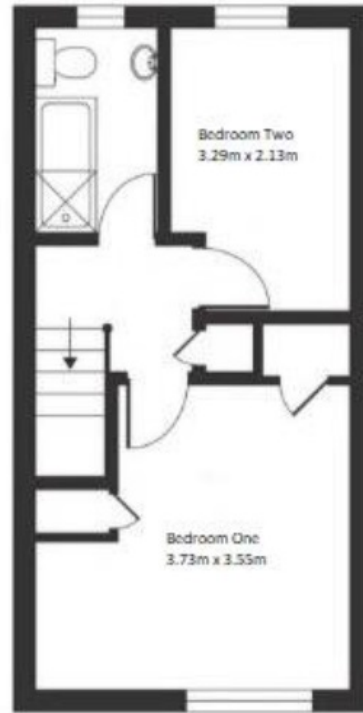


Warren Bradley Estates are pleased to offer this modern 2 bed end of terrace house. Situated on a popular modern development, the property benefits from having a fitted kitchen, gas central heating, modern bathroom, front and rear gardens and also an allocated parking space for 1 car. The property is located near to public transport and shops.

Offered furnished or unfurnished the property is available 1st August 2024.



Ground Floor



First Floor

Energy Efficiency Rating		Current	Potential
Very energy efficient - lower running costs			
(92-100) <b>A</b>			
(81-91) <b>B</b>			
(69-80) <b>C</b>			
(55-68) <b>D</b>		64	66
(39-54) <b>E</b>			
(21-38) <b>F</b>			
(1-20) <b>G</b>			
Not energy efficient - higher running costs			
England, Scotland & Wales		EU Directive 2002/91/EC	

Environmental Impact (CO <sub>2</sub> ) Rating		Current	Potential
Very environmentally friendly - lower CO <sub>2</sub> emissions			
(92-100) <b>A</b>			
(81-91) <b>B</b>			
(69-80) <b>C</b>			
(55-68) <b>D</b>		61	64
(39-54) <b>E</b>			
(21-38) <b>F</b>			
(1-20) <b>G</b>			
Not environmentally friendly - higher CO <sub>2</sub> emissions			
England, Scotland & Wales		EU Directive 2002/91/EC	

