



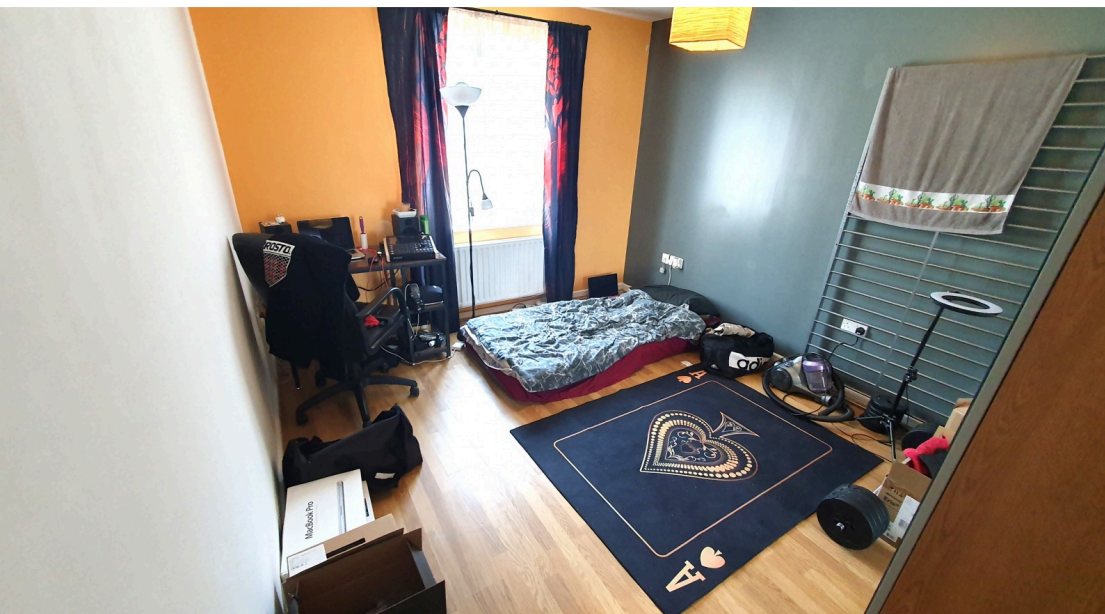
1

Bedroom



1

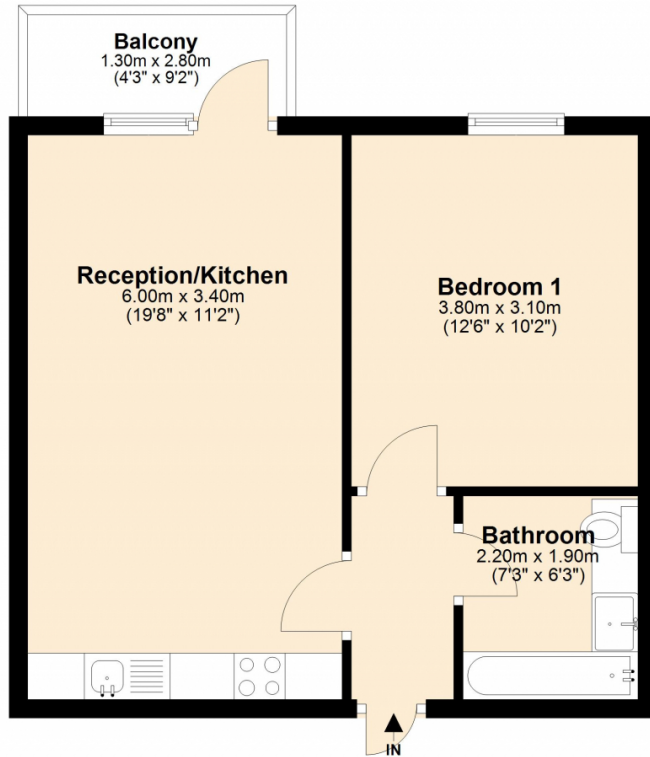
Bathroom



We are delighted to offer for rent this spacious one bedroom apartment. The property benefits from a spacious lounge and open plan kitchen, large balcony, tiled bathroom, large bedroom, gas central heating, double glazing and residents parking. Offered furnished the property is available from the 13th July 2024.

Spice court

Approx. 39.9 sq. metres (429.9 sq. feet)



Total area: approx. 39.9 sq. metres (429.9 sq. feet)

Disclaimer: Please note this floor plan is for marketing purposes and is to be used as a guide only.
Plan produced using PlanUp.

Energy Efficiency Rating		
	Current	Potential
Very energy efficient - lower running costs		
(92+) A		
(81-91) B		
(69-80) C	80	80
(55-68) D		
(39-54) E		
(21-38) F		
(1-20) G		
Not energy efficient - higher running costs		
England, Scotland & Wales		EU Directive 2002/91/EC

Address: Ruby Way, Colindale

