

The Courtyard, northampton NN3 2DD



£162,000

This over 55s two bedroom bungalow benefits from complete redecoration throughout and new flooring to all rooms except the bathroom. The property itself is situated on a small complex with onsite warden and its grounds boast landscaped gardens and picturesque communal buildings. The property itself is set in the corner of a horse shoe of properties around the green. The accommodation comprises of a hallway, two bedrooms with a range of windows offering ample light and fitted kitchen. There is also a spacious lounge (4m approximately) with door into the communal gardens. Finally there is a bathroom has been modified for easy access and comfort bringing together an ideal home.

Hallway

Entered via double glazed door into hallway with wood affect flooring, loft access, two storage cupboards and doors to both bedrooms, lounge and kitchen.

Kitchen

11'6" x 8'3" (3.506 x 2.536)

A range of base and eye level wood units with mosaic style tiling to water sensitive areas , double sink with drainer and mixer tap over, gas hob, electric oven and grill fitted at counter height , undercounter fridge and freezer, plumbing for washing machine, radiator, wall mounted boiler, wood affect flooring and double glazed window. There is also a door into the communal gardens.



Lounge

13'1" x 11'0" (4.005 x 3.356)

Double glazed window to side aspect, radiator, new carpets and double glazed door to side aspect



Bedroom One

16'8" x 10'5" (5.086 x 3.186)

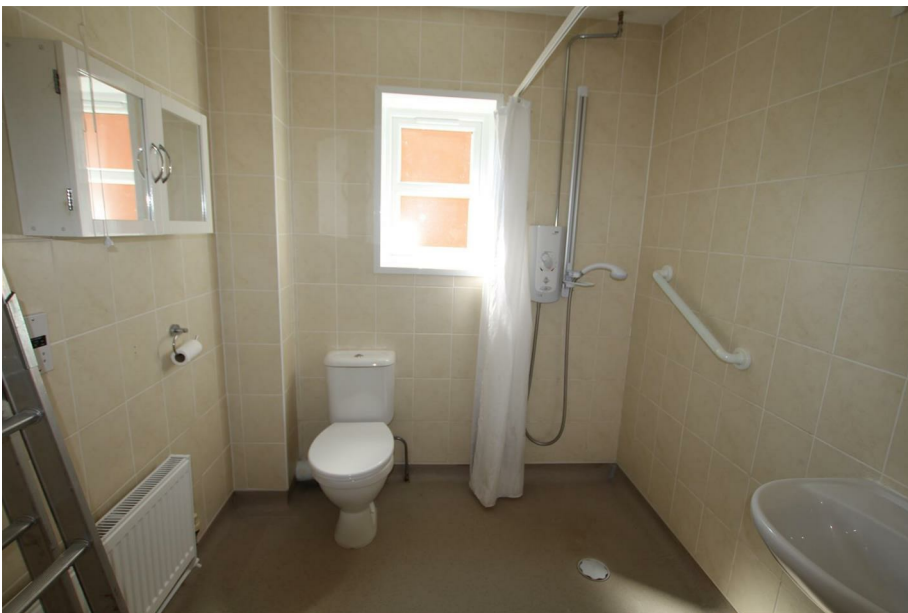
Two double glazed windows, radiator and new carpet.



Bedroom Two

9'9" x 7'1" (2.982 x 2.180)

Double glazed window to front, radiator and new carpet.



Bathroom

Walk in wet room with electric shower and tiled to full height on all sides ,WC, pedestal wash hand basin and double glazed window.

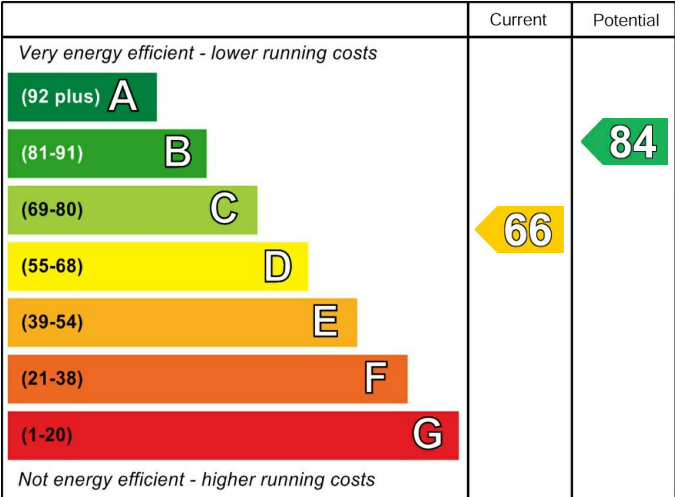
Communal Gardens

Extensive communal gardens with lovely walks and views. With the lodge house that offers a variety of activities. The property grounds also lead onto a meadow offering further green spaces.

Lease information

We are advised that the service charge is £182 per month and the lease runs until the 17th of August 2124.

Energy Efficiency Rating

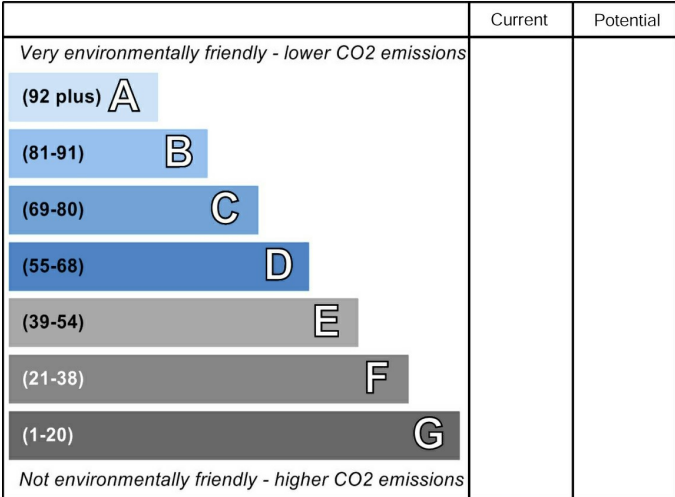


England & Wales

EU Directive
2002/91/EC



Environmental Impact (CO₂) Rating



England & Wales

EU Directive
2002/91/EC

