



Chapelfield Way, Allington, Maidstone, Kent, ME16 9FS

Price £750,000



A SUBSTANTIAL AND BEAUTIFULLY PRESENTED FIVE BEDROOM DOUBLE FRONTED DETACHED FAMILY HOME WITH DOUBLE GARAGE AND FURTHER ACCOMMODATION ABOVE.

Page & Wells are delighted to bring to the market this stunning family home located on the sought after Hermitage Park development on the Allington/Barming borders. The accommodation is appointed over three levels. The ground floor features a most spacious sitting room with feature log burner, large kitchen/dining room, separate utility room, office and WC. The first floor offers a superb principal bedroom suite with extensive wardrobes and a luxury en-suite with both bath and shower cubicle. There is a further double bedroom on this level. The second floor accommodation is versatile, in so much that an internal wall has been removed to provide a dressing room to one of the bedrooms. However, this could simply be reinstated to provide two separate bedrooms. There is a further double bedroom, en-suite shower room and a family bathroom. There is a detached double garage with a shower room and accommodation above, currently used as a studio. In our opinion with a few minor alterations this could make an ideal annexe for a dependant relative or teenager requiring their own independence. There is a driveway providing ample off road parking and a beautifully presented rear garden. Located close to local amenities, this home provides easy access to shops, schools and recreational facilities, making it an ideal choice for families. Contact: PAGE & WELLS King Street 01622 756703.



PROPERTY INFORMATION

EPC rating: B
Council tax band: F
Tenure: freehold

KEY FEATURES

- > Five bedrooms
- > Four bathrooms/shower rooms
- > Double garage
- > Annexe potential
- > Office
- > Sitting room with log burner
- > Large kitchen/dining room
- > Double width driveway

ROOMS

GROUND FLOOR:

Entrance Hall

Sitting Room

Kitchen/Dining Room

Utility Room

Office

FIRST FLOOR:

Principal Bedroom

En-suite Bathroom

Bedroom

SECOND FLOOR:

Bedroom

Bedroom/Dressing Room

Bedroom

En-suite Shower Room

Family Bathroom


EXTERNALLY:

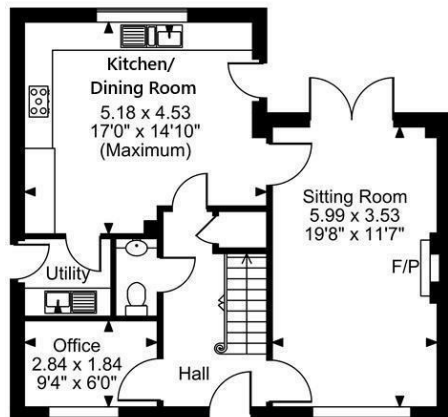
There is a DETACHED DOUBLE GARAGE with a shower room to the rear and a studio above the double garage. In our opinion, this could provide annexe accommodation if required. There is a double width driveway providing ample off road parking and a beautifully presented rear garden.

VIEWING

Viewing strictly by arrangements with the
Agent's Head Office:
52-54 King Street, Maidstone, Kent ME14 1DB
Tel. 01622 756703
Email maidstone@page-wells.co.uk

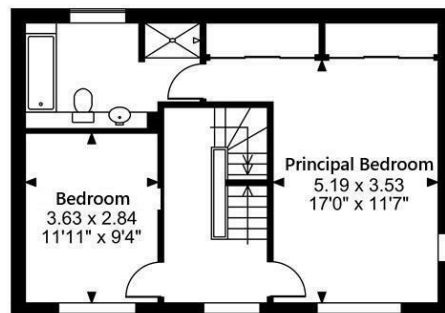
Energy Efficiency Rating

	Current	Potential
Very energy efficient - lower running costs		
(92 plus) A		
(81-91) B	86	87
(69-80) C		
(55-68) D		
(39-54) E		
(21-38) F		
(1-20) G		
Not energy efficient - higher running costs		
England & Wales	EU Directive 2002/91/EC	

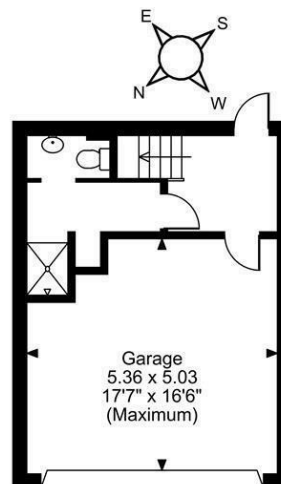


Ground Floor

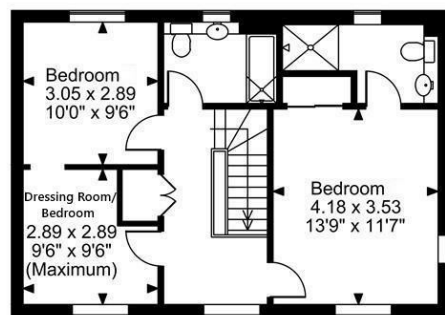
Chapelfield Way, Allington, Maidstone
Approximate Gross Internal Area
Main House = 1817 Sq Ft/169 Sq M
Garage = 617 Sq Ft/57 Sq M
Total = 2434 Sq Ft/226 Sq M



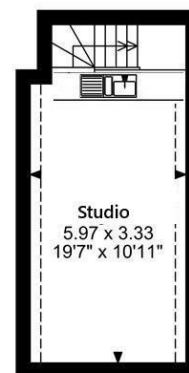
First Floor



Garage



Second Floor



Floor Above Garage

FOR ILLUSTRATIVE PURPOSES ONLY - NOT TO SCALE

The position & size of doors, windows, appliances and other features are approximate only.

□□□ Denotes restricted head height

© ehouse. Unauthorised reproduction prohibited. Drawing ref. dig/8657641/LCO

