



181 Tonbridge Road, Waterringbury, Maidstone, Kent, ME18 5NU
Price £375,000



A WELL PRESENTED TERRACED PERIOD PROPERTY WITH AN ABUNDANCE OF CHARACTER SITUATED IN THE HEART OF WATERINGBURY VILLAGE.

Page & Wells are delighted to bring to the market this rarely available three bedroom character home with accommodation appointed over three levels. The ground floor features a sitting room with feature fireplace opening to a dining area with further fireplace. In addition there is a kitchen/utility room. The first floor offers a principal bedroom and large bathroom. The second floor has two further bedrooms. There is a front garden, a well stocked cottage style garden to the rear and on street parking. Internal viewing is highly recommended by the vendor's sole selling agent. Contact: PAGE & WELLS King Street office 01622 756703.

EPC rating: D
Council tax band: D
Tenure: freehold



LOCATION

Situated in the heart of Watringbury village within close proximity of all local amenities.

PROPERTY INFORMATION

An exceptionally well presented three bedroom period character property with accommodation appointed over three levels.

KEY FEATURES

Three bedrooms

Cottage style rear garden

Large bathroom

Original features

Conveniently placed for amenities

ROOMS:

GROUND FLOOR:

Sitting Room opening to Dining Area: 23'9 x 13'4 maximum (7.24m x 4.06m maximum)

Kitchen/Utility: 11'2 x 6'8 (3.40m x 2.03m)

FIRST FLOOR:

Bedroom 1: 13'4 x 9'10 (4.06m x 3.00m)

Large Bathroom

SECOND FLOOR:

Bedroom 2: 13'4 x 13'1 maximum (4.06m x 3.99m maximum)

Bedroom 3: 13'4 x 7'7 (4.06m x 2.31m)

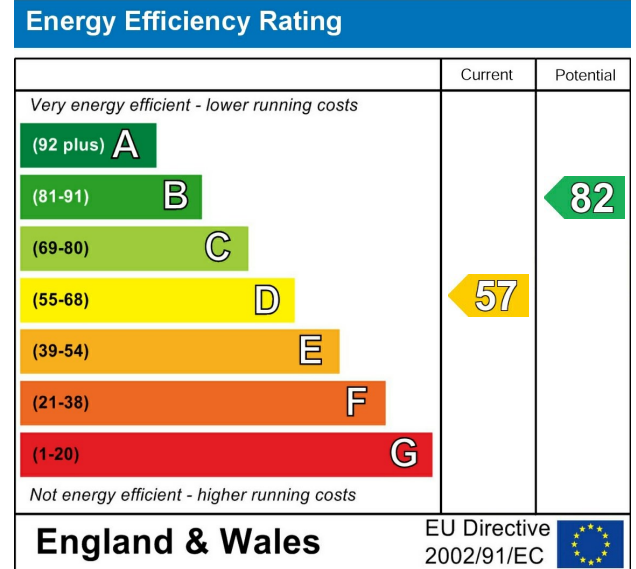
EXTERNALLY:

There is a front garden, a cottage style garden to the rear and on street parking.

VIEWING

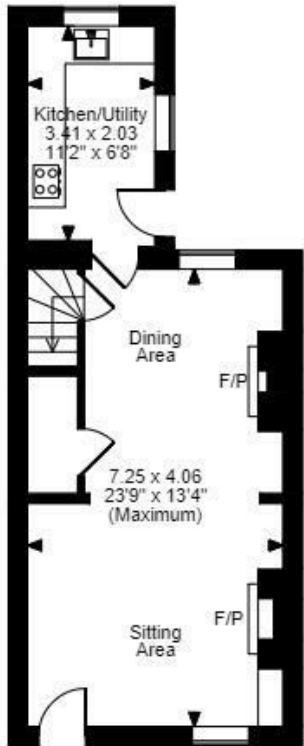
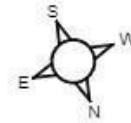
Viewing strictly by arrangements with the Agent's Head Office:

52-54 King Street, Maidstone, Kent ME14 1DB
Tel. 01622 756703

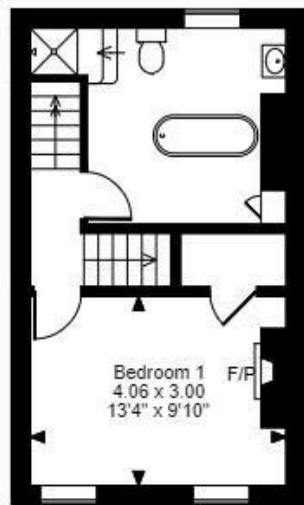


Page & Wells limited for themselves and for the vendors of this property whose agents they are give notice that: 1. These particulars do not constitute any part of, an offer or a contract. 2. All statements contained in these particulars as to this property are made without responsibility on the part of Page & Wells Limited or the Vendor. 3. None of the statements contained in these particulars as to the property is to be relied on as statements or representations of fact. 4. Any intending purchaser must satisfy himself by inspection or otherwise as to the correctness of each of the statements contained in these particulars. 5. The vendor does not make or give, and neither Page & Wells Limited nor any person in their employment has any authority to make or give any representation whatsoever in relation to this property. These particulars are supplied on the understanding that all negotiations are carried out throughout Page & Wells Limited. Properties with a reference prefixes EAA are those which Page & Wells Limited disclose an interest in accordance with the provisions of the Estates Agents Act 1979

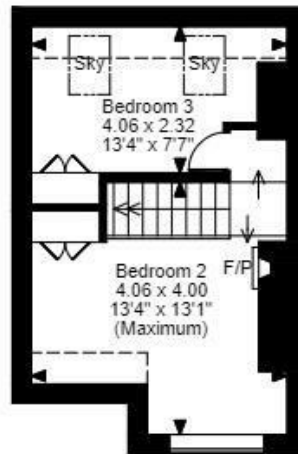
Tonbridge Road, Watringbury, Maidstone, Kent
 Approximate Gross Internal Area
 Main House = 938 Sq Ft/87 Sq M
 Outbuilding = 41 Sq Ft/4 Sq M
 Total = 979 Sq Ft/91 Sq M



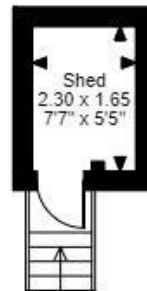
Ground Floor



First Floor



Second Floor



FOR ILLUSTRATIVE PURPOSES ONLY - NOT TO SCALE
 The position & size of doors, windows, appliances and other features are approximate only.
 ☐☐☐ Denotes restricted head height
 © ehouse. Unauthorised reproduction prohibited. Drawing ref. dig/8618933/SS

