



**5 St. Peters Mews Somerfield Road, Maidstone, Kent, ME16 8JJ**  
**Price Guide £600,000 - £625,000**



PRICE GUIDE : £600,000 - £625,000. A BEAUTIFULLY PRESENTED ARCHITECTUALLY DESIGNED FOUR BEDROOM FAMILY HOME SITUATED IN THIS GATED DEVELOPMENT IN THE HIGHLY SOUGHT AFTER SOMERFIELD ROAD AREA. NO FORWARD CHAIN.

Page & Wells are delighted to bring to the market this unique family home situated in a sought after location within walking distance of the town centre and reputable schools. Spacious throughout, the ground floor offers a well proportioned kitchen/breakfast room with French doors opening to the garden. There is a spacious dining room connecting with the well proportioned lounge, completing the ground floor accommodation is a fourth bedroom (could be used as a study) and a shower room. The first floor comprises a mezzanine landing with a double height feature window, three bedrooms (the principal bedroom benefits from an en-suite shower room), together with a main family bathroom. Extensive solid oak flooring. Externally there is a landscaped garden, summerhouse and two covered parking spaces in gated area. Contact PAGE & WELLS King Street office 01622 756703.

EPC rating: C  
Council tax band: G  
Tenure: freehold



## LOCATION

Situated on this most sought after private non through road within walking distance of Maidstone town centre, mainline railway stations, reputable primary and secondary schools.

## PROPERTY INFORMATION

Number 5 St Peters Mews comprises a unique architecturally designed four bedroom family home situated on this sought after gated development.

## KEY FEATURES

Four bedrooms

Three bathrooms

Large kitchen

Dining room/family area

Lounge with French doors opening to garden

Landscaped gardens with summerhouse

Off road parking facilities

No forward chain

## ROOMS

### GROUND FLOOR

Entrance Hall

Shower Room

Kitchen

Bedroom 4/Study

Dining Room/Family Area

Lounge

### FIRST FLOOR:

Bedroom 1

En-suite Shower Room

Bedroom 2

Bedroom 3

Family Bathroom

### EXTERNALLY:

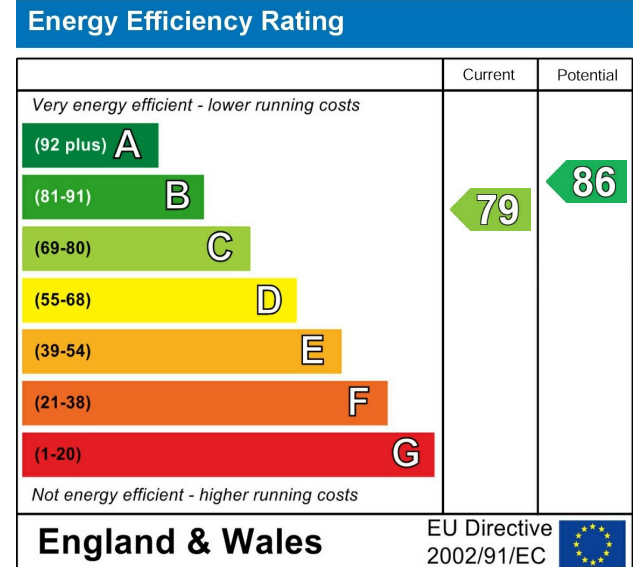
There are landscaped gardens, summerhouse and two covered parking spaces in gated area.

### VIEWING

Viewing strictly by arrangements with the Agent's Head Office:

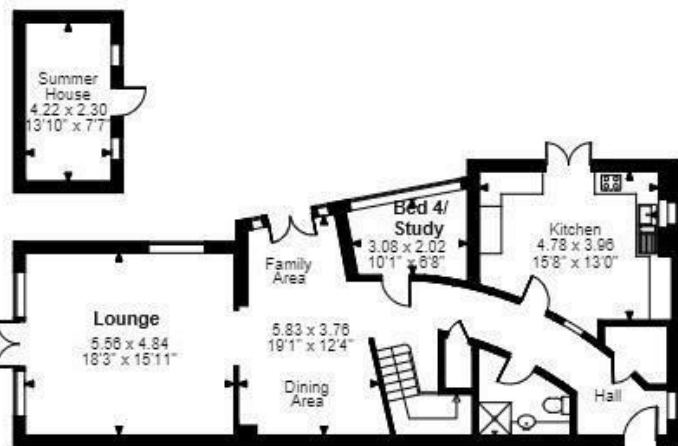
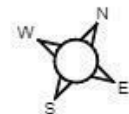
52-54 King Street, Maidstone, Kent ME14 1DB

Tel. 01622 756703

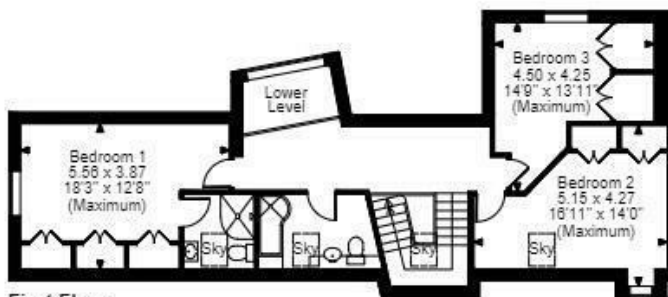


Page & Wells limited for themselves and for the vendors of this property whose agents they are give notice that: 1. These particulars do not constitute any part of, an offer or a contract. 2. All statements contained in these particulars as to this property are made without responsibility on the part of Page & Wells Limited or the Vendor. 3. None of the statements contained in these particulars as to the property is to be relied on as statements or representations of fact. 4. Any intending purchaser must satisfy himself by inspection or otherwise as to the correctness of each of the statements contained in these particulars. 5. The vendor does not make or give, and neither Page & Wells Limited nor any person in their employment has any authority to make or give any representation whatsoever in relation to this property. These particulars are supplied on the understanding that all negotiations are carried out throughout Page & Wells Limited. Properties with a reference prefixes EAA are those which Page & Wells Limited disclose an interest in accordance with the provisions of the Estates Agents Act 1979

St. Peters Mews, Somerfield Road, Maidstone, Kent  
 Approximate Gross Internal Area  
 Main House = 1882 Sq Ft/175 Sq M  
 Outbuilding = 104 Sq Ft/10 Sq M  
 Total = 1986 Sq Ft/185 Sq M



Ground Floor



First Floor

FOR ILLUSTRATIVE PURPOSES ONLY - NOT TO SCALE  
 The position & size of doors, windows, appliances and other features are approximate only.  
 © ehouse. Unauthorised reproduction prohibited. Drawing ref. dig/8612225/LCO

