



10 Kerry Hill Way, Maidstone, ME14 2GZ
Price Guide £400,000 - £425,000



PRICE GUIDE : £400,000 - £425,000. A BEAUTIFULLY PRESENTED FOUR BEDROOM FAMILY HOME SITUATED IN A MUCH SOUGHT AFTER CUL DE SAC LOCATION ADJACENT TO WHATMAN PARK OFFERING EXTENSIVE ACCOMMODATION.

The ground floor features a cloakroom, access to the integral garage and a large modern kitchen/diner with double doors opening to the rear garden. The first floor consists of a family bathroom, bedroom and sizeable reception room with two Juliet balconies enjoying fine views of the river. On the top floor will be found three further bedrooms and an en-suite shower room. There is parking to the front of the garage and a well maintained garden to the rear. Internal viewing is highly recommended. Contact: PAGE & WELLS King Street office 01622 756703

EPC rating: C
Council tax band: E
Tenure: freehold



LOCATION

Kerry Hill Way is situated in an excellent location with Whatman Park on its door step, within close proximity of Maidstone East railway station and the High Street with its wide range of shops, bars and restaurants. Maidstone, the county town of Kent, is ideally situated in the heart of the county with access to London, the Kent coast and beautiful countryside. There are pleasant riverside walks close by.

PROPERTY INFORMATION

A beautifully presented four bedroom family home with accommodation appointed over three levels.

KEY FEATURES

Principal bedroom with modern en-suite shower room

Superb kitchen/diner

Large reception room with two Juliet balconies with views

Integral garage

Pleasant garden to rear

Downstairs cloakroom

Modern family bathroom

ACCOMMODATION

GROUND FLOOR:

Entrance Hall

WC

Kitchen/Diner: 18'3 x 16'4 maximum (5.56m x 4.98m maximum)

Integral Garage

FIRST FLOOR:

Family Bathroom

Reception Room: 16'4 x 13'7 maximum (4.98m x 4.14m maximum)

Bedroom: 10'4 x 9'9 (3.15m x 2.97m)

SECOND FLOOR:

Principal Bedroom: 14'2 x 10'4 (4.32m x 3.15m)

En-suite Shower Room

Bedroom: 9'9 x '9 (2.97m x '2.74m)

Bedroom: 9'9 x 7' (2.97m x 2.13m)


EXTERNALLY:

There is parking available to the front of the garage and a pleasant garden to the rear.

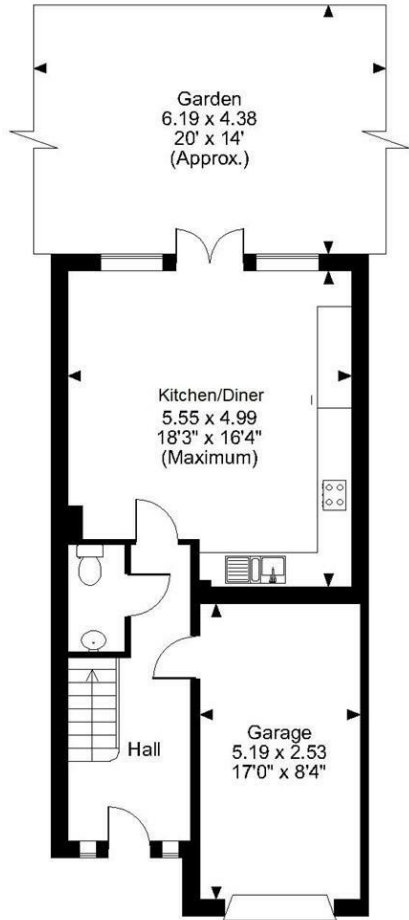
VIEWING

Viewing strictly by arrangements with the Agent's Head Office:
52-54 King Street, Maidstone, Kent ME14 1DB
Tel. 01622 756703

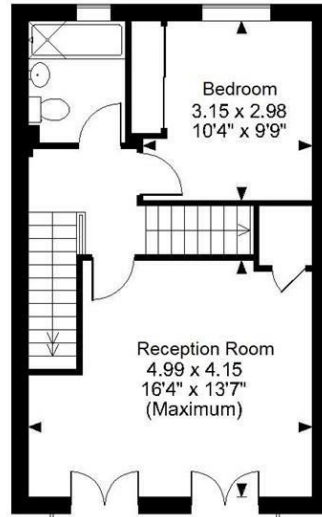
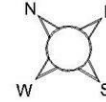
Energy Efficiency Rating

	Current	Potential
<i>Very energy efficient - lower running costs</i>		
(92 plus) A		
(81-91) B		87
(69-80) C	73	
(55-68) D		
(39-54) E		
(21-38) F		
(1-20) G		
<i>Not energy efficient - higher running costs</i>		
England & Wales	EU Directive 2002/91/EC	

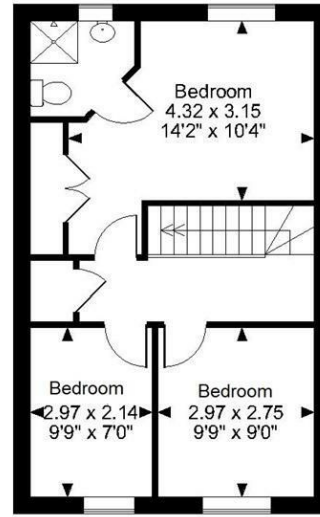
Page & Wells limited for themselves and for the vendors of this property whose agents they are give notice that: 1. These particulars do not constitute any part of, an offer or a contract. 2. All statements contained in these particulars as to this property are made without responsibility on the part of Page & Wells Limited or the Vendor. 3. None of the statements contained in these particulars as to the property is to be relied on as statements or representations of fact. 4. Any intending purchaser must satisfy himself by inspection or otherwise as to the correctness of each of the statements contained in these particulars. 5. The vendor does not make or give, and neither Page & Wells Limited nor any person in their employment has any authority to make or give any representation whatsoever in relation to this property. These particulars are supplied on the understanding that all negotiations are carried out throughout Page & Wells Limited. Properties with a reference prefixes EAA are those which Page & Wells Limited disclose an interest in accordance with the provisions of the Estates Agents Act 1979



Kerry Hill Way, Maidstone
Approximate Gross Internal Area
Main House = 1273 Sq Ft/118 Sq M
Garage = 158 Sq Ft/15 Sq M
Total = 1431 Sq Ft/133 Sq M



First Floor



Second Floor

Ground Floor

FOR ILLUSTRATIVE PURPOSES ONLY - NOT TO SCALE

The position & size of doors, windows, appliances and other features are approximate only.

© ehouse. Unauthorised reproduction prohibited. Drawing ref. dig/8598318/TOW

