



4 Coriander Drive, Barming, Maidstone, Kent, ME16 0ZD
Price £350,000

****EXCEPTIONALLY SPACIOUS TWO BEDROOM TERRACED HOME **WALKING DISTANCE OF MAIDSTONE HOSPITAL **ALLOCATED PARKING **EN-SUITE TO PRINCIPAL BEDROOM **DOWNSTAIRS CLOAKROOM
INTERNAL VIEWING HIGHLY RECOMMENDED

Page & Wells are delighted to bring to the market this rarely available two bedroom terraced home situated in this sought after residential location close to Maidstone Hospital. The property offers a spacious lounge, cloakroom and kitchen on the ground floor, whilst on the first floor will be found two double bedrooms (one of which benefits from an en-suite shower room), together with a family bathroom. There is a pleasant garden to the rear and allocated parking facilities for one vehicle. The property is well placed for all local amenities and internal viewing is highly recommended. Contact: PAGE & WELLS King Street office 01622 756703.

EPC rating: C
Council Tax Band: C
Tenure: Freehold



GROUND FLOOR:

Front entrance door to ...

Entrance Hall

Cloakroom

Lounge: 15'3 max x 13'9 (4.65m max x 4.19m)

Kitchen: 11'5 x 6'4 (3.48m x 1.93m)

FIRST FLOOR:

Bedroom 1: 12'6 x 9'2 (3.81m x 2.79m)

En-suite Shower Room: 6'2 x 5'3 (1.88m x 1.60m)

Bedroom 2: 13'9 x 7'6 (4.19m x 2.29m)

Family Bathroom: 6'4 x 5'8 (1.93m x 1.73m)

EXTERNALLY:

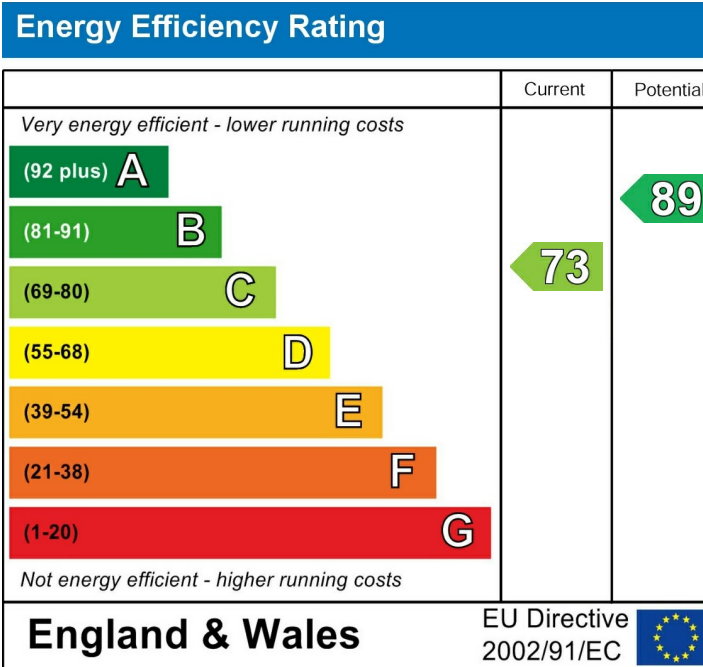
There is a pleasant garden to the rear and an allocated parking space.

VIEWING

Viewing strictly by arrangements with the Agent's Head Office:

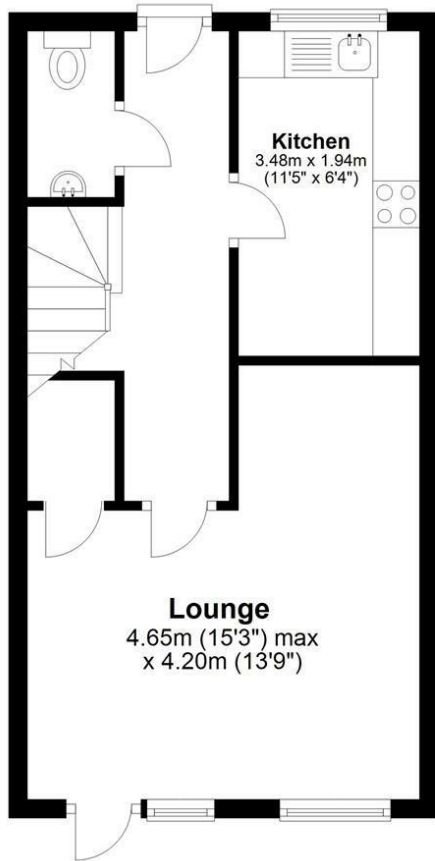
52-54 King Street, Maidstone, Kent ME14 1DB

Tel. 01622 756703

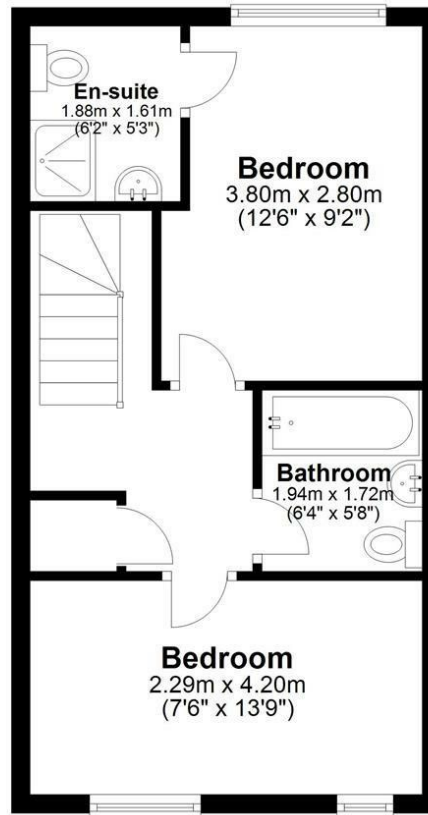


Page & Wells limited for themselves and for the vendors of this property whose agents they are give notice that: 1. These particulars do not constitute any part of, an offer or a contract. 2. All statements contained in these particulars as to this property are made without responsibility on the part of Page & Wells Limited or the Vendor. 3. None of the statements contained in these particulars as to the property is to be relied on as statements or representations of fact. 4. Any intending purchaser must satisfy himself by inspection or otherwise as to the correctness of each of the statements contained in these particulars. 5. The vendor does not make or give, and neither Page & Wells Limited nor any person in their employment has any authority to make or give any representation whatsoever in relation to this property. These particulars are supplied on the understanding that all negotiations are carried out throughout Page & Wells Limited. Properties with a reference prefixes EAA are those which Page & Wells Limited disclose an interest in accordance with the provisions of the Estates Agents Act 1979

Ground Floor



First Floor



Total area: approx. 69.1 sq. metres (744.1 sq. feet)

