



**141 Sutton Road, Maidstone, Kent, ME15 9AA**  
**Price Guide £425,000 - £450,000**



PRICE GUIDE : £425,000 - £450,000. A BEAUTIFULLY PRESENTED AND COMPREHENSIVELY REFURBISHED EXTENDED THREE BEDROOM SEMI-DETACHED FAMILY HOME SITUATED IN A POPULAR RESIDENTIAL SETTING TO THE SOUTH OF MAIDSTONE TOWN CENTRE. NO FORWARD CHAIN.

This attractive three bedroom home has been considerably improved by its current owner and features a bay fronted lounge, superb open plan kitchen/dining room, sitting room, utility room and shower room. The first floor offers three bedrooms and a modern family bathroom. There is a driveway providing off road parking, a garage and a good size rear garden. Internal viewing is highly recommended. Contact: PAGE & WELLS King Street office 01622 756703.

EPC rating: D  
Council tax band: D  
Tenure: freehold



## LOCATION

Situated in a popular residential setting to the south of Maidstone town centre with easy access to local amenities

## PROPERTY INFORMATION

A completely refurbished extended three bedroom semi-detached family home with driveway, garage and large rear garden

## KEY FEATURES

Superb open plan kitchen/dining room

Lounge and sitting room

Ground floor shower room and first floor modern bathroom

Utility room

Tasteful décor

No forward chain

## ROOMS

### GROUND FLOOR:

Entrance Hall

Lounge: 15'6 x 12'3 (4.72m x 3.73m)

Kitchen/Dining Room: 18'6 x 9'6 (5.64m x 2.90m)

Sitting Room: 11' x 10'2 (3.35m x 3.10m)

Utility Room

Shower Room

### FIRST FLOOR:

Landing

Bedroom 1: 13'3 x 9'10 (4.04m x 3.00m)

Bedroom 2: 11'2 x 9'8 (3.40m x 2.95m)

Bedroom 3: 9'1 x 8'5 (2.77m x 2.57m)

Modern Bathroom

## EXTERNALLY

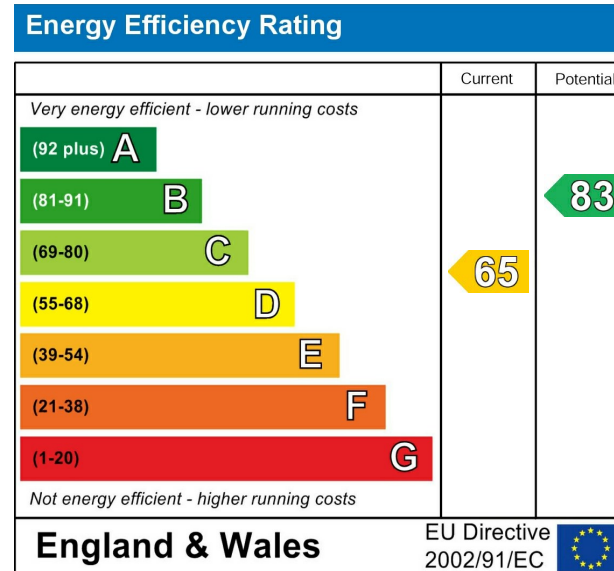
There is a driveway providing off road parking facilities leading to a GARAGE. There is a good size garden to the rear.

## VIEWING

Viewing strictly by arrangements with the Agent's Head Office:

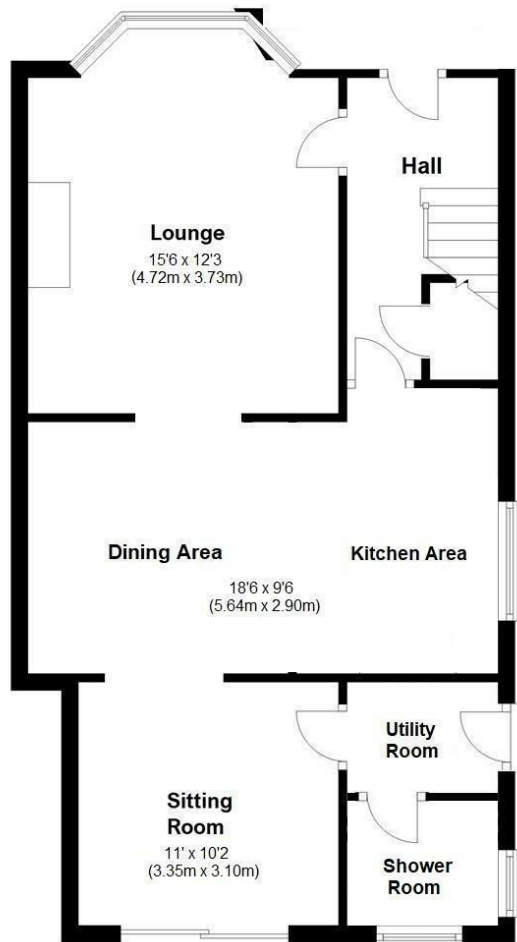
52-54 King Street, Maidstone, Kent ME14 1DB

Tel. 01622 756703



Page & Wells limited for themselves and for the vendors of this property whose agents they are give notice that: 1. These particulars do not constitute any part of, an offer or a contract. 2. All statements contained in these particulars as to this property are made without responsibility on the part of Page & Wells Limited or the Vendor. 3. None of the statements contained in these particulars as to the property is to be relied on as statements or representations of fact. 4. Any intending purchaser must satisfy himself by inspection or otherwise as to the correctness of each of the statements contained in these particulars. 5. The vendor does not make or give, and neither Page & Wells Limited nor any person in their employment has any authority to make or give any representation whatsoever in relation to this property. These particulars are supplied on the understanding that all negotiations are carried out throughout Page & Wells Limited. Properties with a reference prefixes EAA are those which Page & Wells Limited disclose an interest in accordance with the provisions of the Estates Agents Act 1979

### Ground Floor



### First Floor

