



Brunswick Cottage, 13 Doddington Court, Maidstone, Kent, ME16 0SE
Guide Price £425,000 - £450,000

**** GUIDE PRICE £425,000 - £450,000 ** EXQUISITE SEMI-DETACHED VICTORIAN FAMILY HOME ** 4 BEDROOMS ** 2 RECEPTION ROOMS ** LARGE GARAGE ** CUL-DE-SAC LOCATION ** WALKING DISTANCE OF TOWN CENTRE, MAINLINE RAILWAY STATIONS AND REPUTABLE SCHOOLS ** INTERNAL VIEWING HIGHLY RECOMMENDED ****

Page & Wells are delighted to bring to the market this delightful four bedroom semi-detached Victorian cottage nestled in the far corner of this popular cul-de-sac setting. The ground floor accommodation features two spacious receptions rooms, kitchen, cloakroom and 4th bedroom. The first floor offers three bedrooms, cot room/study and bathroom with free-standing bath. Externally, there is a large garage and pleasant rear garden. The property is situated in an excellent location within walking distance of mainline railway stations, reputable schools, Maidstone town centre and all local amenities. Contact PAGE & WELLS King Street Office on 01622 756703. EPC Rating: D. Tenure: Freehold. Council Tax Band: E.



GROUND FLOOR:

Dining Room 12'9" x 12'7" (3.89m x 3.85m)

Sitting Room 14'4" x 13'6" (4.39m x 4.12m)

Kitchen 12'3" x 7'7" (3.74m x 2.32m)

Cloakroom

Bedroom 8'8" x 7'7" (2.65m x 2.32m)

FIRST FLOOR:

Bedroom 14'2" x 8'2" (4.34m x 2.51m)

Bedroom 11'8" x 10'7" (3.57m x 3.23m)

Bedroom 7'11" x 7'10" (2.42m x 2.41m)

Cot Room/Study 9'2" x 4'9" (2.81m x 1.45m)

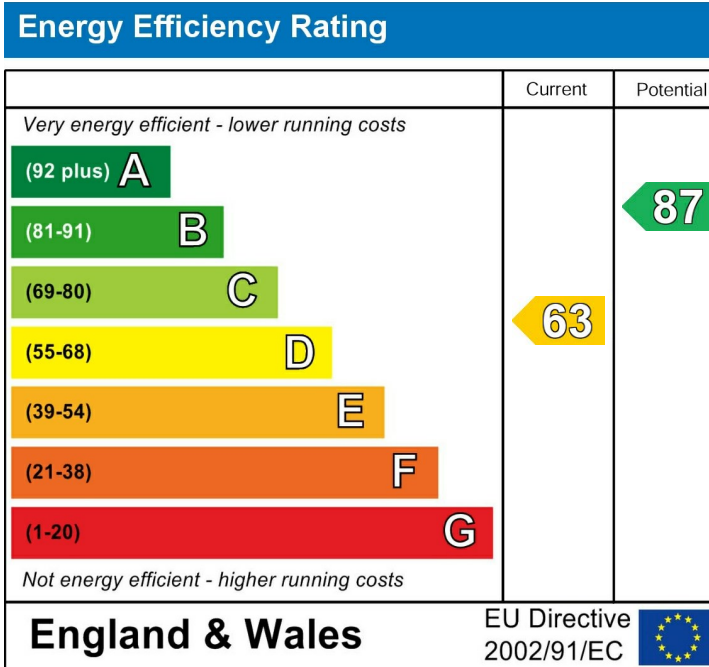
Bathroom

EXTERNALLY

There is a delightful garden to the rear with a large garage to the front providing off-road parking.

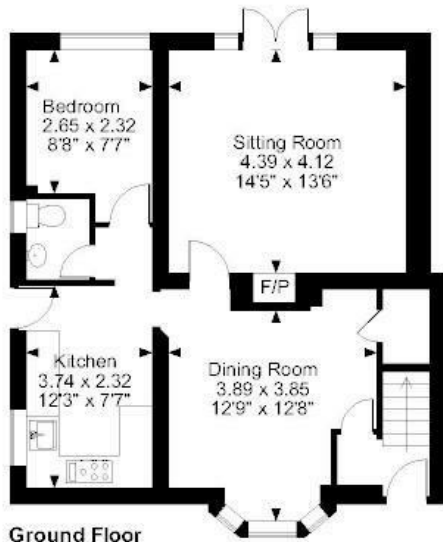
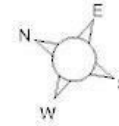
VIEWING

Strictly by arrangements with the Agent's Head Office:
52-54 King Street, Maidstone, Kent ME14 1DB. Tel:
01622 756703.

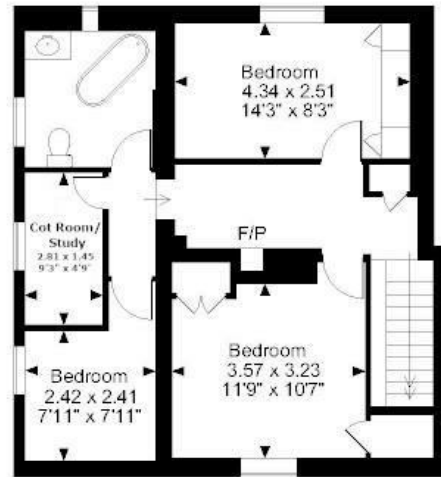


Page & Wells limited for themselves and for the vendors of this property whose agents they are give notice that: 1. These particulars do not constitute any part of, an offer or a contract. 2. All statements contained in these particulars as to this property are made without responsibility on the part of Page & Wells Limited or the Vendor. 3. None of the statements contained in these particulars as to the property is to be relied on as statements or representations of fact. 4. Any intending purchaser must satisfy himself by inspection or otherwise as to the correctness of each of the statements contained in these particulars. 5. The vendor does not make or give, and neither Page & Wells Limited nor any person in their employment has any authority to make or give any representation whatsoever in relation to this property. These particulars are supplied on the understanding that all negotiations are carried out throughout Page & Wells Limited. Properties with a reference prefixes EAA are those which Page & Wells Limited disclose an interest in accordance with the provisions of the Estates Agents Act 1979

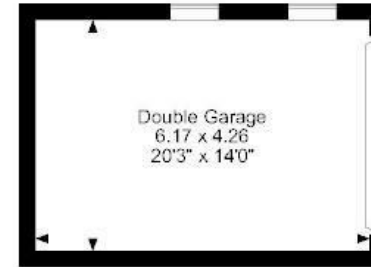
Doddington Court, Maidstone
Approximate Gross Internal Area
Main House = 1260 Sq Ft/117 Sq M
Double Garage = 283 Sq Ft/26 Sq M



Ground Floor



First Floor



FOR ILLUSTRATIVE PURPOSES ONLY - NOT TO SCALE

The position & size of doors, windows, appliances and other features are approximate only.
© ehouse. Unauthorised reproduction prohibited. Drawing ref. dig/8560925/SLU

