



Seddon Gardens, Leighton Buzzard, LU7 3RF

Offers In Excess Of £425,000







# Seddon Gardens, Leighton Buzzard, LU7

Offers In Excess Of £425,000

- Modern Development of Manor Heath in Leighton Buzzard
- Impressive Detached Family Home
- Master Bedroom with Fitted Wardrobes & En-Suite
- 18Ft Kitchen/Diner with Fitted Appliances
- NHBC Guarantee Remaining
- Built By Award Winning Mulberry Homes
- Three Bedrooms
- Driveway Parking & Garage
- Separate Living Room
- Abundance of Fitted Storage

Located within the sought after Manor Heath development, built by award winning builder Mulberry Homes is this well presented and modern, three bedroom detached family home providing the perfect balance of modern convenience in a tranquil residential setting.

Tucked away within the highly desirable Manor Heath development in Leighton Buzzard, this sought-after location is renowned for its peaceful surroundings while still being just moments from the town centre, local schools, and transport links including the mainline train station into London.

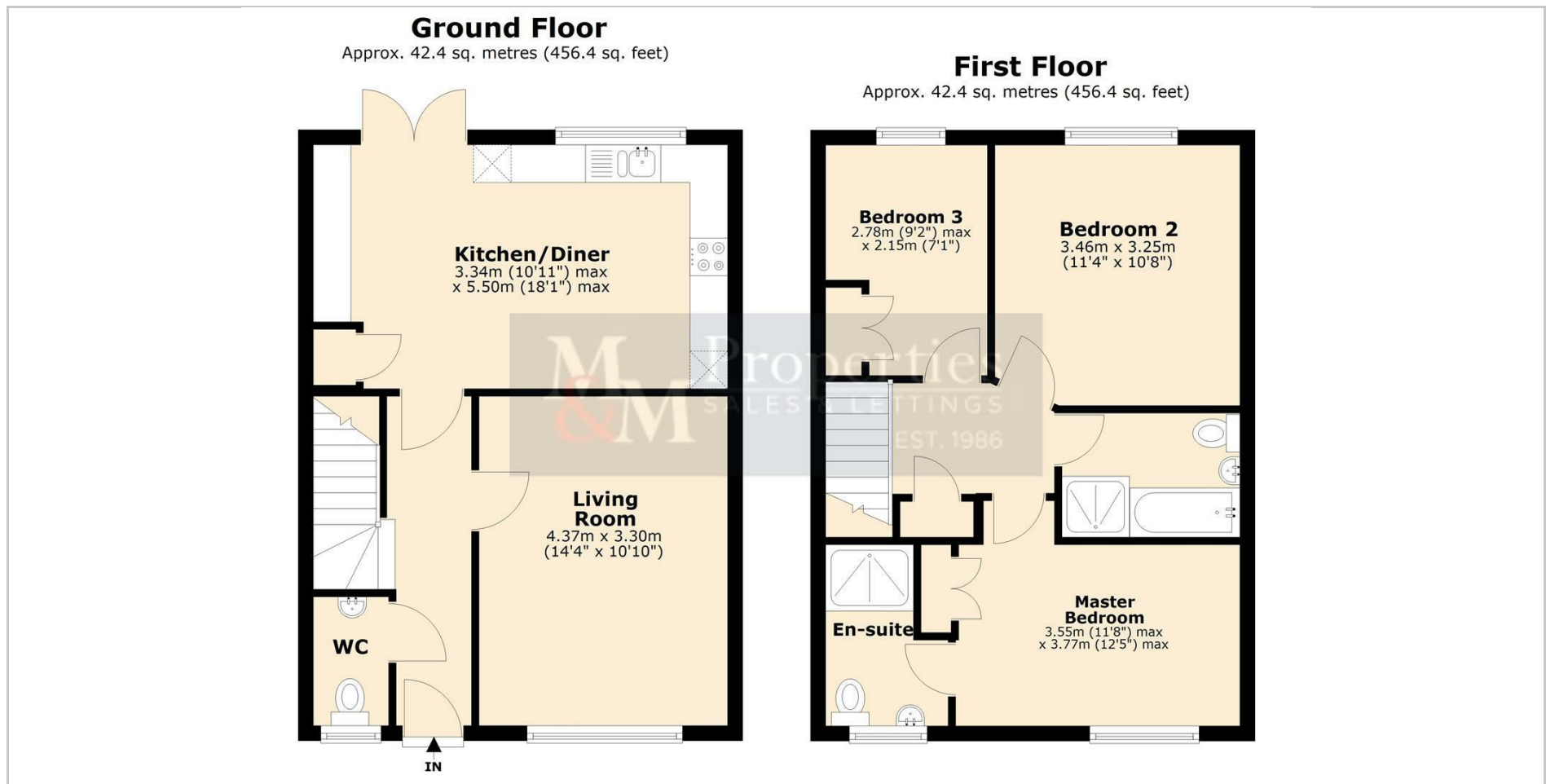








## Floor Plans



## Viewing

Please contact our Leighton Buzzard Office on 01525 377733.

If you wish to arrange a viewing appointment for this property or require further information.

**IMPORTANT:** Whilst we aim to make our details accurate and reliable, if there is any point of particular concern to you, please contact the office. The apparatus, equipment, fittings and services have not been checked and therefore it is in the purchaser's interest to establish the working condition of the appliance included. Personal items such as furnishings which may be shown in the photographs are not included in the asking price. No survey has been carried out by M & M Properties. Measurements have a tolerance of +/- 3". Please note that this floorplan has not been drawn to scale and is therefore for room layout purposes only. It does not constitute or form part of a contract. Doors may be hung in opposite directions.