



Vandyke Road, Leighton Buzzard, LU7 3HQ

Offers In Excess Of £450,000



Vandyke Road, Leighton Buzzard, LU7 3HQ

Offers In Excess Of £450,000

- Beautifully Presented Family Home
- Three Double Bedrooms
- 17Ft Double Aspect Lounge Area
- Four Piece Family Bathroom
- Impressive Size of Over 1700 Sq Ft
- Charming & Characterful Victorian House
- 26Ft Kitchen/Dining/Family Area
- Master Bedroom with Ensuite & Walk in Wardrobe
- Ornate Open Fireplace
- Just 30 Minute Walk to Train Station

M & M Properties are delighted to offer this deceptively spacious, beautifully presented home. This 1700 square ft, three double bedroom, bay fronted period house is situated along one of the towns oldest and most historic roads of Vandyke Road.

This impressively sized family home comes with a stunning 26ft kitchen, diner and family entertaining room with a feature centre island, a utility and laundry area. There is also a fantastic master bedroom with en-suite and walk in wardrobe aswell as a separate double aspect lounge with ornate open fireplace, making it perfectly equipped to suit the needs of families of all sizes.







Floor Plans

Approximate Gross Internal Area
Ground Floor = 81.7 sq m / 879 sq ft
First Floor = 76.5 sq m / 823 sq ft
Total = 158.2 sq m / 1,702 sq ft

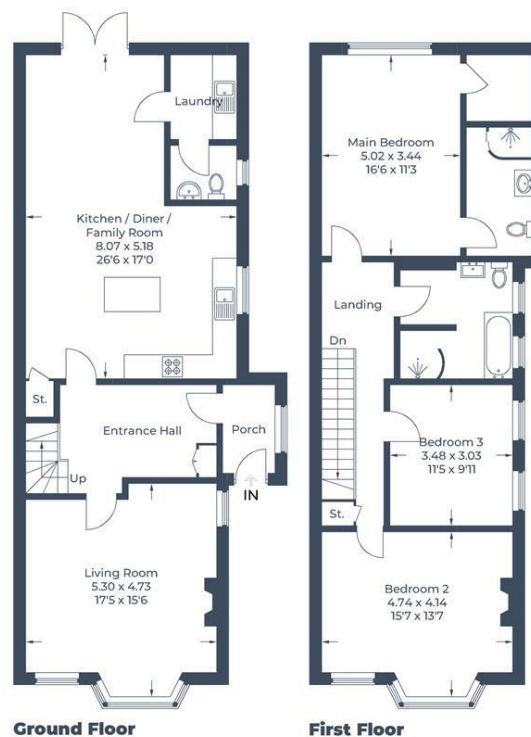


Illustration for identification purposes only,
measurements are approximate, not to scale.

© CJ Property Marketing

Viewing

Please contact our Leighton Buzzard Office on 01525 377733.

If you wish to arrange a viewing appointment for this property or require further information.

IMPORTANT: Whilst we aim to make our details accurate and reliable, if there is any point of particular concern to you, please contact the office. The apparatus, equipment, fittings and services have not been checked and therefore it is in the purchaser's interest to establish the working condition of the appliance included. Personal items such as furnishings which may be shown in the photographs are not included in the asking price. No survey has been carried out by M & M Properties. Measurements have a tolerance of +/- 3". Please note that this floorplan has not been drawn to scale and is therefore for room layout purposes only. It does not constitute or form part of a contract. Doors may be hung in opposite directions.