



Lake Street, Leighton Buzzard

£190,000

🛏️ 2 🛁 2 🛋️ 1 ☰ c

Lake Street, Leighton Buzzard

IMPRESSIVELY SIZED TOP FLOOR APARTMENT | TWO DOUBLE BEDROOMS | NO UPPER CHAIN | OVER 700 SQUARE FEET! LIFT ACCESS | EN-SUITE TO MASTER BEDROOM | 21FT LIVING ROOM WITH BAY WINDOW

M & M Properties are pleased to offer this HIGHLY SPACIOUS, TWO DOUBLE BEDROOM TOP FLOOR APARTMENT, situated within the popular Magnon Court on Lake Street which is less than a minute to the high street and town centre, aswell as being walking distance to the mainline train station.

Location

Magnon Court is a apartment building with a lift located on the edge of the Leighton Buzzard town centre offering a short walk into the main high street which includes a wide range of shops, supermarkets, pubs, restaurants and local businesses aswell as a vibrant twice-weekly charters market. There are also excellent commuter links close by to include the Leighton Buzzard train station being just 0.8 miles away which can provide a direct link into London Euston in approx 30 minutes, additionally there are numerous roads to include the A5, A4146, 1414 and M1 within close proximity.

Accommodation

The property is located on the top floor, benefitting from highly spacious rooms throughout. The accommodation is set over a single floor which includes an entrance hallway with storage cupboard, a DOUBLE ASPECT LOUNGE/DINER with bright 'turret style' windows, kitchen area with space for a range of appliances, master bedroom with an en-suite shower room, a second double bedroom and a family bathroom.

Parking

There is one allocated parking space within the car park.

Viewing

Please contact our Leighton Buzzard Office on 01525 377733.

If you wish to arrange a viewing appointment for this property or require further information.

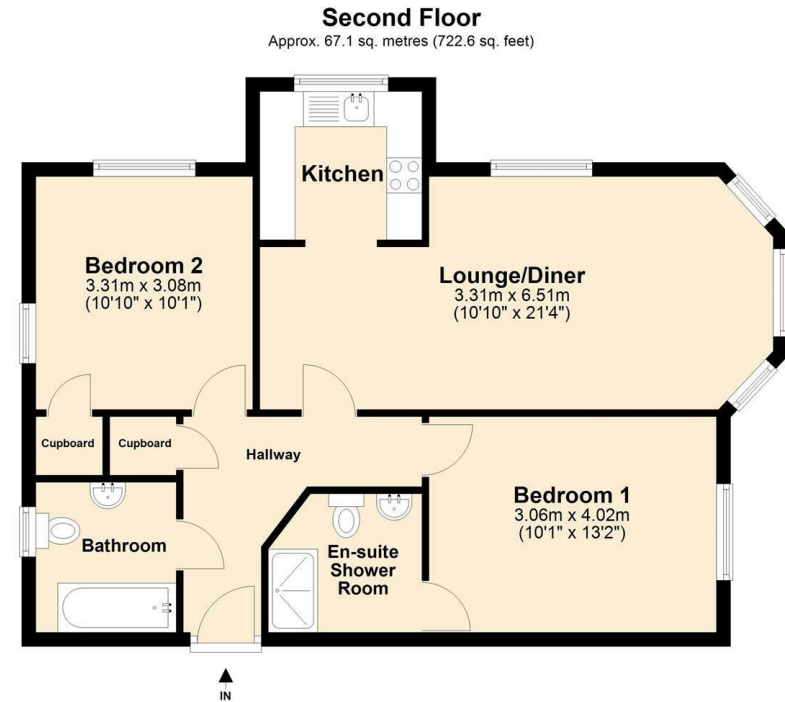
IMPORTANT: Whilst we aim to make our details accurate and reliable, if there is any point of particular concern to you, please contact the office. The apparatus, equipment, fittings and services have not been checked and therefore it is in the purchaser's interest to establish the working condition of the appliance included. Personal items such as furnishings which may be shown in the photographs are not included in the asking price. No survey has been carried out by M & M Properties. Measurements have a tolerance of +/- 3". Please note that this floorplan has not been drawn to scale and is therefore for room layout purposes only. It does not constitute or form part of a contract. Doors may be hung in opposite directions.

27/29 Hockliffe Street, Leighton Buzzard - LU7 1EZ

Sales: 01525 377733 - Lettings: 01525 371997

sales@mandmproperties.co.uk - lettings@mandmproperties.co.uk

Floor Plan



Total area: approx. 67.1 sq. metres (722.6 sq. feet)

LOCAL PEOPLE WORKING FOR YOU