



📍 26 Waterside Park, Devizes, Wiltshire, SN10 2TG

🏠 Guide Price £299,950

A recently decorated, 3-bedroom end of terrace home, situated in a popular location. Offered to the market with no onward chain.

- 3-bedrooms
- End of terrace
- Recently decorated throughout
- No onward chain
- 2 allocated parking spaces
- Close to Devizes Marina
- Fully enclosed rear garden

🏡 Freehold

🏠 EPC Rating C



A three-bedroom end of terrace home, well positioned within this popular development close to the marina and the highly regarded 'The Hourglass' public house. The property has recently been redecorated throughout, including new carpets, and is presented in good order. Further benefits include two allocated parking spaces and a well-sized rear garden laid mainly to lawn with a patio seating area.

The ground floor accommodation is arranged around an entrance hall with cloakroom. To the right sits the kitchen, fitted with an electric oven and gas ring hob. To the rear is a generous reception room measuring 19'7 x 13'10, providing excellent space for living and dining, with sliding doors opening directly onto the garden.

Upstairs are three bedrooms, with the main bedroom featuring built-in cupboards. A family bathroom serves all three rooms and includes a shower over the bath.

Waterside Park offers a convenient setting within easy reach of Devizes town centre and its full range of amenities, with lovely walks along the nearby canal towpath and a good choice of local pubs and restaurants close at hand.

Situation

The property is located in a sought after cul de sac on the edge of Devizes that is next to the Marina, a stone's throw from the canal, the popular Hourglass public house and marina café, and within easy access of the local villages of Bishops Cannings, Coate and Stert. The historic market town of Devizes has many amenities including town centre shopping, a leisure centre, schools for all ages, various supermarkets, a variety of shops, cinema, theatre and thriving weekly market. The historic Kennet & Avon Canal runs through the town providing fishing and walking facilities. The major centres of Bath, Salisbury, Swindon, Marlborough and Chippenham are all within a 30 mile radius.

Property information

Tenure: Freehold

Council tax band: C

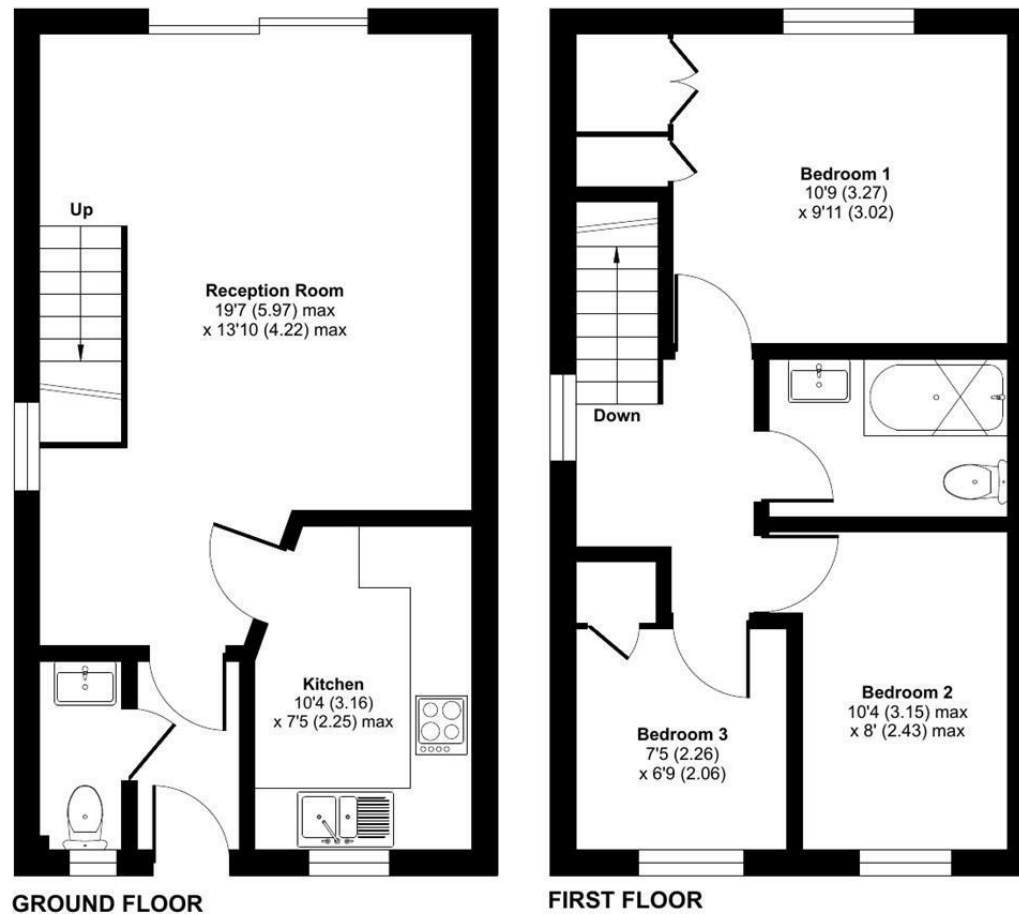
EPC rating: C



Waterside Park, Devizes, SN10

Approximate Area = 724 sq ft / 67.2 sq m

For identification only - Not to scale



Floor plan produced in accordance with RICS Property Measurement 2nd Edition, Incorporating International Property Measurement Standards (IPMS2 Residential). © nchecon 2025. Produced for Strakers. REF: 1341255

Disclaimer These particulars, whilst believed to be accurate are set out as a general outline only for guidance and do not constitute any part of an offer or contract. Intending purchasers should not rely on them as statements of representation of fact, but must satisfy themselves by inspection or otherwise as to their accuracy. No person in this firm's employment has the authority to make or give any representation or warranty in respect of the property. All measurements and distances are approximate only. Your home is at risk if you do not keep up repayments on a mortgage or other loan secured on it.