



📍 28 Fruitfields Close, Devizes, Wiltshire, SN10 5JY

🏠 Guide Price £675,000

An immaculately presented five bedroom detached family home, with an incredibly spacious interior and set just a stone's throw from Drews Pond Woods and Wansdyke Primary School.

- Superb Family Home
- Five Bedrooms
- Two En-Suites + A Family Bathroom
- Three Reception Rooms
- Generous Solid Wood Kitchen & Separate Utility
- Private Corner Plot Garden
- Parking For Up To 4 Cars
- Double Garage
- Close To Town & Schools
- Fabulous Woodland Walks On The Doorstep

🏡 Freehold

🏠 EPC Rating C



A 5 bedroom, 3 reception room family home with 2 en suites and a family bathroom situated in a good sized corner plot.

A most impressive five double bedroom detached family home, within easy walking distance of the beautiful market town of Devizes, as well as a stone's throw from Drews Pond Woods and the highly regarded Wansdyke Primary School. The property has been redecorated throughout and in more recent years has had a new gas boiler installed alongside a contemporary family bathroom and modernised en suite shower rooms.

Inside, you will be greeted with a light and spacious entrance hall with a staircase ascending to a galleried landing. On the ground floor there is a modern kitchen/breakfast room with granite worktops and French doors opening out to the landscaped garden. The large sitting room is complemented by a useful study, a downstairs updated cloakroom and a flexibly dining/family room. On the first floor is a spacious main bedroom with a stylish en-suite, a guest bedroom also with an en-suite, three further good sized bedrooms and a luxury fitted family bathroom. To the rear is a sunny, private landscaped garden with a patio, lawn, separate sitting area at the bottom of the garden and side access. There is also a double garage with eaves storage and off road parking for up to 4 cars.

An early viewing is recommended to avoid disappointment.

Situation

The property is located on a corner plot within this established close, near to Drews Pond woodland which provides wonderful walks and is also well placed for the very popular Wansdyke Primary School. Historic Devizes is bisected by the Kennet & Avon canal, part of a waterway joining London to Bristol and famed for its flight of twenty-nine locks, an engineering and aesthetic marvel walking distance from the town, and a paradise for canoeists, bargers and anglers. Featuring a wealth of listed buildings and a weekly market, the bustling town enjoys a beautiful setting amidst Wiltshire's chalk downlands criss-crossed by ancient byways and prehistoric earthworks providing a scenic playground for walkers and cyclists. Cultural facilities include a museum, active theatre, cinema and vibrant live-music scene. The major centres of Bath, Salisbury, Swindon, Marlborough and Chippenham are all within a 30-mile radius.

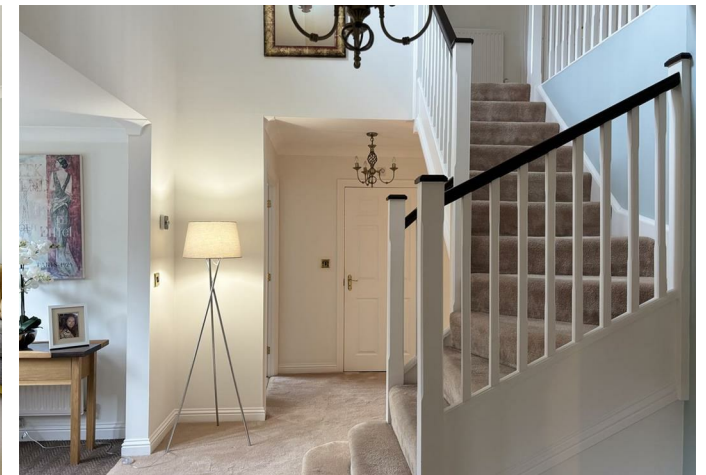
Property Information

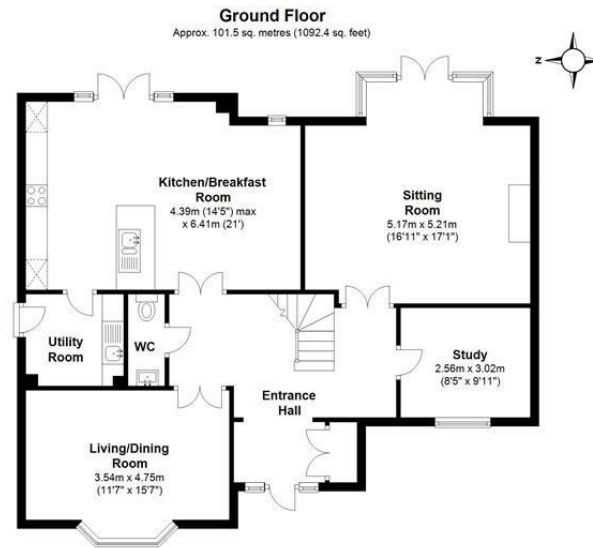
Tenure: Freehold

Council Tax Band: F

Services: Mains water, drainage, gas and electricity connected.
Gas fired central heating.

EPC Rating: C





Total area: approx. 195.7 sq. metres (2106.3 sq. feet)

Disclaimer These particulars, whilst believed to be accurate are set out as a general outline only for guidance and do not constitute any part of an offer or contract. Intending purchasers should not rely on them as statements of representation of fact, but must satisfy themselves by inspection or otherwise as to their accuracy. No person in this firm's employment has the authority to make or give any representation or warranty in respect of the property. All measurements and distances are approximate only. Your home is at risk if you do not keep up repayments on a mortgage or other loan secured on it.