



📍 11 Chantry Court New Park Street, Devizes, Wiltshire, SN10 1BH

🏠 Guide Price £125,000

A recently decorated 2-bedroom ground floor retirement apartment in the popular Chantry Court, situated in the heart of Devizes town centre. Offered with no onward chain

- Recently redecorated
- NO ONWARD CHAIN
- 2-bedrooms
- Retirement apartment
- Ground floor
- Situated in the heart of Devizes
- Access to communal lounge and rooftop terrace

🔑 Leasehold

🏠 EPC Rating D



Offered to the market is this well-proportioned, recently redecorated, two-bedroom ground floor apartment set within the sought-after Chantry Court development, just a short walk from Devizes town centre. Offered to the market with no onward chain.

The accommodation extends to approx. 581 sq ft and is arranged around a welcoming entrance hall with useful built-in storage. There are two bedrooms, bedroom one includes built in storage, a spacious reception room with feature bay window, a fitted kitchen, and a modern shower room. The flat benefits from level access throughout and is ideally positioned for ease of movement both within the flat and around the development.

Chantry Court is a purpose-built retirement complex for the over-55s, offering secure and comfortable independent living with excellent on-site amenities. These include a lift to all floors, communal residents' lounge, rooftop and landscaped gardens, guest suite, and 24-hour emergency Careline system.

Conveniently located just moments from local shops, cafes, a post office, bus routes and the historic town centre, this property would suit anyone looking for low-maintenance living with a strong sense of community. Offered with no onward chain.

Situation

The historic market town of Devizes has many amenities including town centre shopping, a leisure centre, schools for all ages, various supermarkets, a variety of shops, cinema, theatre and thriving weekly market. The historic Kennet & Avon Canal runs through the town providing fishing and walking facilities. The major centres of Bath, Salisbury, Swindon, Marlborough and Chippenham are all within a 30 mile radius.

Property information

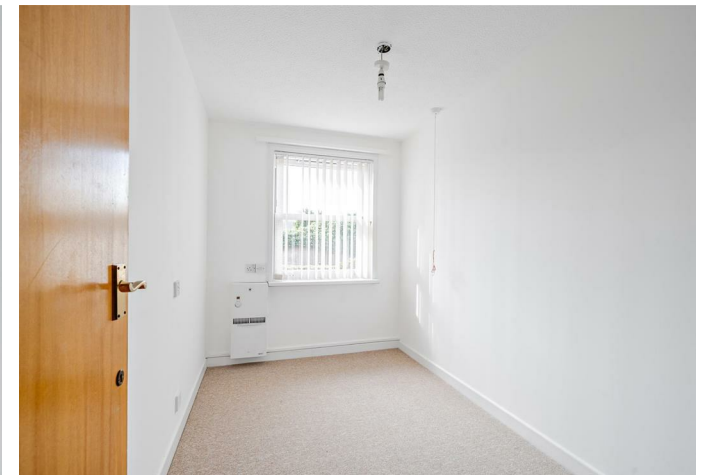
Tenure: Leasehold - 99 years from 24/06/1987

Service charge: £3,242.44 p.a

Ground rent: £69.96 p.a

Council tax band: B

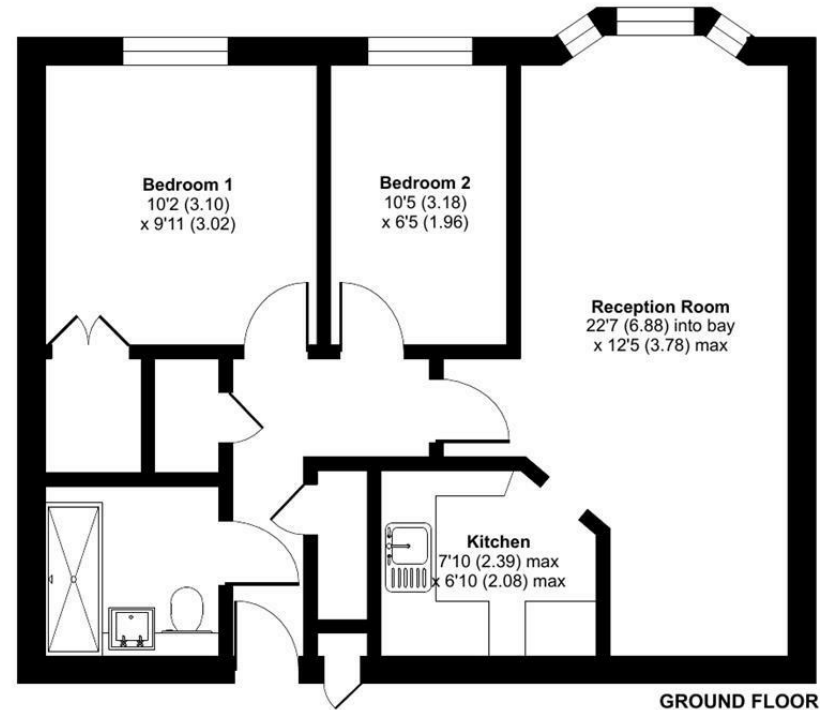
EPC rating: D



Chantry Court, New Park Street, Devizes, SN10

Approximate Area = 581 sq ft / 54 sq m

For identification only - Not to scale



 Floor plan produced in accordance with RICS Property Measurement 2nd Edition, Incorporating International Property Measurement Standards (IPMS2 Residential). © nitchecom 2025. Produced for Strakers. REF: 1303648

Disclaimer These particulars, whilst believed to be accurate are set out as a general outline only for guidance and do not constitute any part of an offer or contract. Intending purchasers should not rely on them as statements of representation of fact, but must satisfy themselves by inspection or otherwise as to their accuracy. No person in this firm's employment has the authority to make or give any representation or warranty in respect of the property. All measurements and distances are approximate only. Your home is at risk if you do not keep up repayments on a mortgage or other loan secured on it.