



strakers

📍 35 Long Street, Devizes, Wiltshire, SN10 1NT

In branch | Online | On the move
strakers.co.uk

📍 35 Long Street, Devizes, Wiltshire, SN10 1NT

🏠 Guide Price £685,000

A most incredible period home with a stunning interior and a private garden, conveniently located right in the town centre.

- Prestigious Period Home
- Over 3700 sqft (Includes a Sizeable Cellar)
- Town Centre Location
- 6 Bedrooms or 5 Bedrooms plus a Dressing Room./Study
- 2 Elegant Reception Rooms
- 31ft Bespoke Kitchen/Breakfast Room
- 2 Shower Rooms plus a Bathroom
- Completely Private Garden
- Wonderful Character Features
- Amenities on the Doorstep

🏡 Freehold

🏠 EPC Rating



35 Long Street is an absolute period gem, beautifully positioned within just a stone's throw of the historic Market Place of Devizes. With over 3700sqft of immaculately presented accommodation set over 4 floors (including a substantial useable cellar with a remote controlled access hatch), this substantial character home is a must view to fully appreciate the numerous features and quality it possesses.

Internally, a lobby with flagstones and glass panelled doors opens through to a grand entrance hall with tiled flooring and stairs up to the first floor. An elegant drawing room with large sash windows, painted wooden floorboards and an attractive fireplace with inset gas fire, leads through to a flexible snug/family room with shelving and stone tiled flooring and a further ornate fireplace. Sash windows overlook the private rear garden. The heart of this home and a splendid eating/entertaining space is the 31ft long kitchen/breakfast room, which has a range of painted bespoke units as well as a central island with granite worktops and a stunning dresser with inset display lights. Again the high ceiling is a notable feature as are the flagstones and painted floorboards that divide the room. The kitchen is well equipped with an American style fridge/freezer and a 'Rangemaster' oven, alongside a gas fired AGA and integrated dish washer. Set off the Kitchen is a useful utility room and downstairs cloakroom. In the breakfast room alongside a cast iron fireplace and storage cupboard is the remote controlled access hatch and stairs down to a wonderful cellar that provides excellent storage (as well as potential for conversion to further accommodation). On the first floor there are 3 double bedrooms and a stylish family bathroom. The dual aspect main bedroom also enjoys a refitted en suite. On the top floor there are 3 further double bedrooms (or a study) and a shower room.

A fully enclosed and very charming private courtyard is the perfect place for al fresco eating.

Situation

This remarkable character home is located in the very heart of the town, on the fabulous Long Street, which has a splendid selection of period and Listed homes. The property itself sits within a short distance of the Market Place and the renovated Hillworth Park. A historic market town, Devizes has many amenities including town centre shopping, a leisure centre, schools for all ages, various supermarkets, a variety of shops, cinema, theatre and thriving weekly market. The historic Kennet & Avon Canal runs through the town providing fishing and walking facilities. The major centres of Bath, Salisbury, Swindon, Marlborough and Chippenham are all within a 30 mile radius.

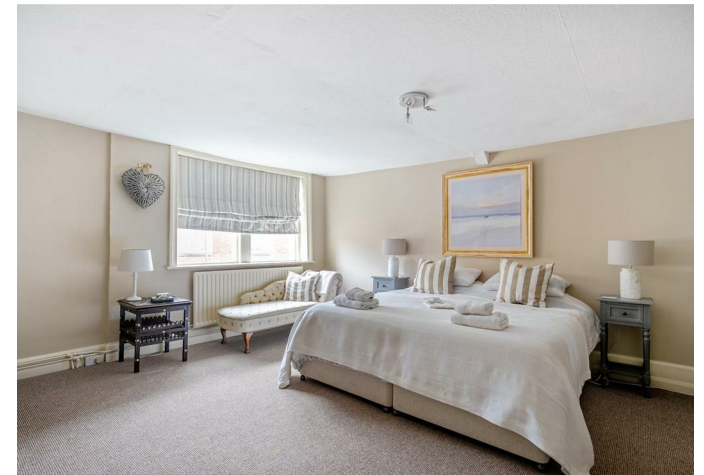
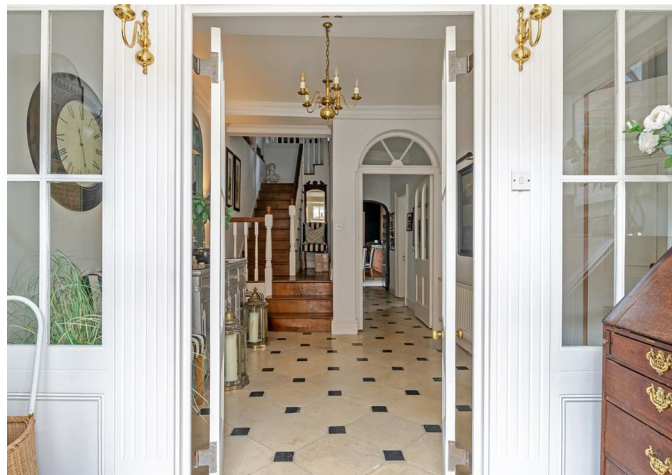
Property Information

Council Tax: Band F

Services: All mains services are connected

Grade II Listed and Conservation Area.

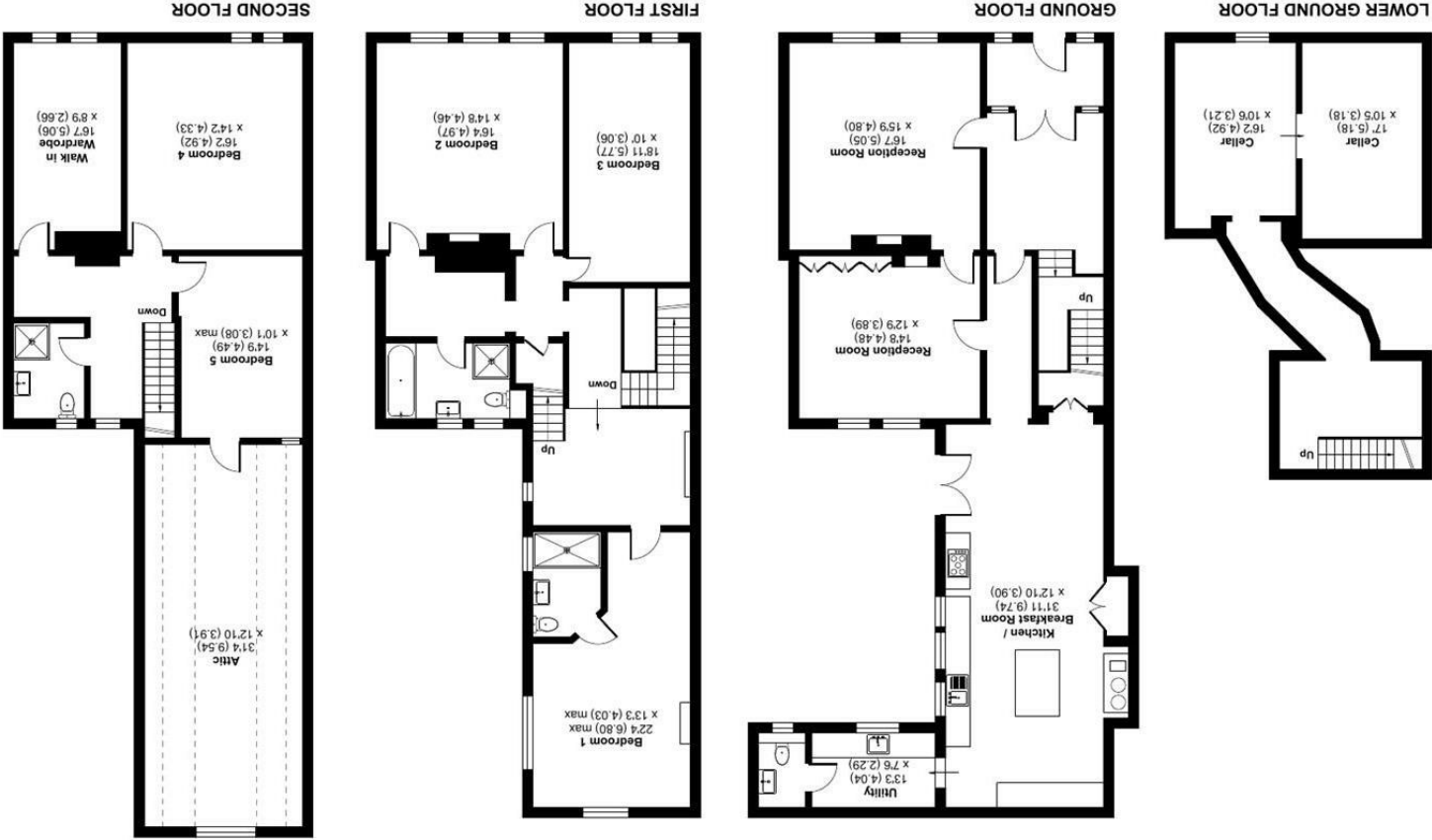
On street parking close by or alternative arrangements can be made with nearby clubs.



Long Street, Devizes, SN10

Approximate Area = 3716 sq ft / 345.2 sq m
Limited Use Area(s) = 396 sq ft / 36.7 sq m
Total = 4112 sq ft / 382 sq m

For identification only - Not to scale



Floor plan produced in accordance with RICS Property Measurement 2nd Edition, incorporating International Property Measurement Standards (IPMS2 Residential). © nichecomm 2025. Produced for Strakers. REF: 1280000

Disclaimer These particulars, whilst believed to be accurate are set out as a general outline only for guidance and do not constitute any part of an offer or contract. Intending purchasers should not rely on them as statements of representation of fact, but must satisfy themselves by inspection or otherwise as to their accuracy. No person in this firms employment has the authority to make or give any representation or warranty in respect of the property. All measurements and distances are approximate only. Your home is at risk if you do not keep up repayments on a mortgage or other loan secured on it.