



📍 4 Bridewell Square, Devizes, Wiltshire, SN10 1NG

🏠 Guide Price £297,500

A unique and immaculately presented 2-bedroom Victorian end of terrace cottage, refurbished by the current owner, to the wonderful accommodation you see today.

- Recently refurbished
- 2-bedrooms
- Victoria end of terrace cottage
- Private and good sized historic walled garden
- Tucked away off historical Bridewell Street
- Town centre amenities on your doorstep
- Character features throughout
- Immaculately presented

🏠 Freehold

🏠 EPC Rating D



A smartly updated two-bedroom end of terrace Victorian cottage, tucked away in a quiet corner just off Bridewell Street, offering an excellent balance of character, space and privacy. Refurbished by the current owner, this home is ready to move into and offers a generous private garden, that's rare for a property in this position.

The accommodation is arranged over two floors and includes a cosy sitting room, with feature fireplace, perfect for relaxing or entertaining. To the rear, the kitchen/dining room is a real highlight — modern and well-finished, with ample workspace and room for a table, making it a sociable and functional heart of the home. The ground floor also features a contemporary bathroom suite with underfloor heating, a roll top bath and separate shower, from here, you can also access a separate utility cupboard which is under the stairs.

Upstairs, there are two comfortable double bedrooms. Bedroom 1 spans the full width of the house, offering excellent proportions, while Bedroom 2, also spanning the full width of the house, is a good size and would work well as a guest room, home office, or child's bedroom.

Outside, the historic walled garden offers a surprising amount of space for a property in this setting — ideal for those who enjoy outdoor living, gardening, or simply a private area to relax in the warmer months.

Well-suited to a wide range of buyers, from first-time purchasers to downsizers or investors, this is a great opportunity to own a well-finished, conveniently located home with plenty of charm and practical appeal.

Situation

Conveniently located in the town, Bridewell Street has a wide selection of period and listed homes. The property itself sits within a short distance of the town centre and the recently renovated Hillworth Park. A historic market town, Devizes has many amenities including town centre shopping, a leisure centre, schools for all ages, various supermarkets, a variety of shops, cinema, theatre and thriving weekly market. The historic Kennet & Avon Canal runs through the town providing fishing and walking facilities. The major centres of Bath, Salisbury, Swindon, Marlborough and Chippenham are all within a 30 mile radius.

Property information

We are advised all mains services are connected.

Tenure: Freehold

Council tax band: B

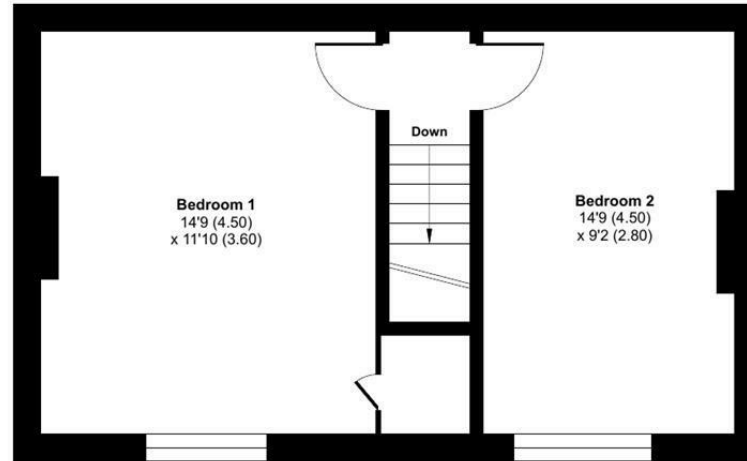
EPC rating: D



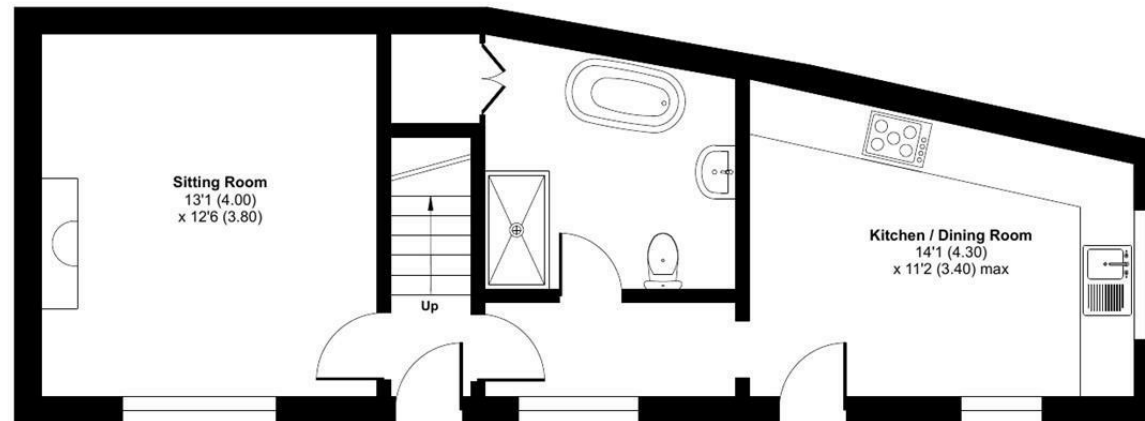
Bridewell Square, SN10

Approximate Area = 855 sq ft / 79.4 sq m

For identification only - Not to scale



FIRST FLOOR



GROUND FLOOR



Floor plan produced in accordance with RICS Property Measurement 2nd Edition, Incorporating International Property Measurement Standards (IPMS2 Residential). © nitchecom 2025. Produced for Strakers. REF: 1284719

Disclaimer These particulars, whilst believed to be accurate are set out as a general outline only for guidance and do not constitute any part of an offer or contract. Intending purchasers should not rely on them as statements of representation of fact, but must satisfy themselves by inspection or otherwise as to their accuracy. No person in this firm's employment has the authority to make or give any representation or warranty in respect of the property. All measurements and distances are approximate only. Your home is at risk if you do not keep up repayments on a mortgage or other loan secured on it.