



📍 Little Salisbury Cottage Little Salisbury, Pewsey, Wiltshire, SN9 5NB

📄 Auction Guide £225,000

A delightful four bedroom semi-detached cottage located on the road between Pewsey and Burbage offering a spacious living, garden and parking

- For Sale by Online Auction
- Thursday 22nd May 2025
- Lot 03
- Guide Price £225,000+

🏠 Freehold

🏠 EPC Rating E



LOT 03  
FOR SALE BY ONLINE AUCTION  
THURSDAY 22nd MAY 2025  
GUIDE PRICE £225,000+

4 Bedroom semi-detached cottage situated in a semi-rural position in need of modernisation. Located in the heart of the Pewsey Vale surrounded by countryside.

The property is well located only a short drive from Pewsey which is a thriving Wiltshire village catering for most day to day requirements with a range of local amenities including schooling, doctors, local stores, restaurants and pubs. Communications are excellent with a mainline rail station to Paddington and both the M4 (J15) and A303 providing fast road access to London and the West Country; nearby Marlborough has further excellent shopping facilities and the village is well placed for access to the larger regional centres of Swindon, Salisbury and Newbury, all within easy motoring distance.

The spacious accommodation comprises on the ground floor; entrance hall with large bay window, living room, dining room, kitchen/breakfast room and cloakroom. On the first floor; landing, 4 bedrooms and a family bathroom. There is double glazing and oil fired heating.

Parking area to the side and enclosed rear garden mainly laid to lawn.

[what3words///appendix.flips.cabs](#)

Travel from Pewsey towards Burbage and as you reach Little Salisbury the cottage is on the right.

#### Situation & Description

4 Bedroom semi-detached cottage situated in a semi-rural position in need of modernisation. Located in the heart of the Pewsey Vale surrounded by countryside.

The property is well located only a short drive from Pewsey which is a thriving Wiltshire village catering for most day to day requirements with a range of local amenities including schooling, doctors, local stores, restaurants and pubs. Communications are excellent with a mainline rail station to Paddington and both the M4 (J15) and A303 providing fast road access to London and the West Country; nearby Marlborough has further excellent shopping facilities and the village is well placed for access to the larger regional centres of Swindon, Salisbury and Newbury, all within easy motoring distance.

The spacious accommodation comprises on the ground floor; entrance hall with large bay window, living room, dining room, kitchen/breakfast room and cloakroom. On the first floor; landing, 4 bedrooms and a family bathroom. There is double glazing and oil fired heating.

Parking area to the side and enclosed rear garden mainly laid to lawn.

[what3words///appendix.flips.cabs](#)

Travel from Pewsey towards Burbage and as you reach Little Salisbury the cottage is on the right.

#### Viewings

To arrange a viewing, contact: office on \*\*\*

There will be numerous pre-arranged open house viewing slots lasting for 30 minutes and you can book in by contacting the Auctioneers.

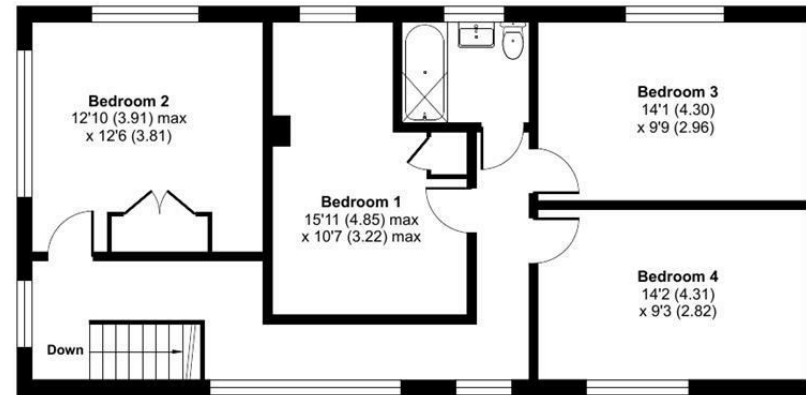
If you have any concerns with viewings, please contact the relevant Strakers office and we would be happy to discuss them with you and hopefully put you at ease.



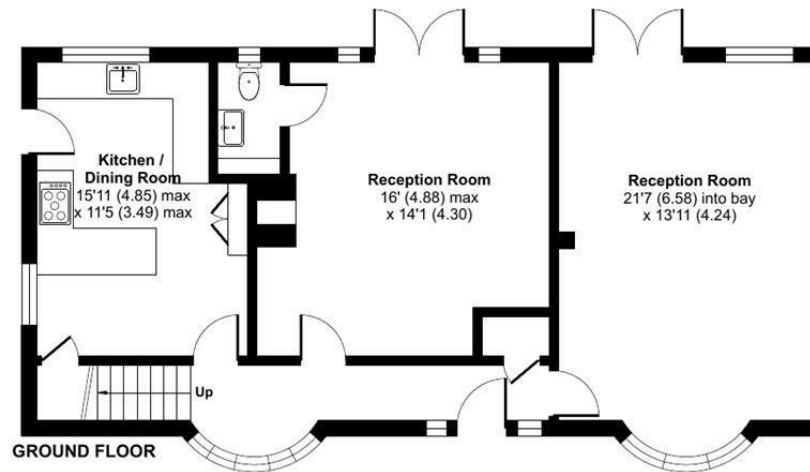
# Little Salisbury, Pewsey, SN9

Approximate Area = 1653 sq ft / 153.5 sq m

For identification only - Not to scale



FIRST FLOOR



GROUND FLOOR

 Floor plan produced in accordance with RICS Property Measurement 2nd Edition, Incorporating International Property Measurement Standards (IPMS2 Residential). © ntechcom 2025. Produced for Strakers. REF: 1225026

Disclaimer These particulars, whilst believed to be accurate are set out as a general outline only for guidance and do not constitute any part of an offer or contract. Intending purchasers should not rely on them as statements of representation of fact, but must satisfy themselves by inspection or otherwise as to their accuracy. No person in this firm's employment has the authority to make or give any representation or warranty in respect of the property. All measurements and distances are approximate only. Your home is at risk if you do not keep up repayments on a mortgage or other loan secured on it.