



📍 16 Bowes Court, Thomas Wyatt Road, Devizes,
Wiltshire, SN10 5FQ

🏠 Guide Price £215,000

A 2-bedroom end of terrace home in the sought after Thomas Wyatt Road development. Delightfully presented throughout, with idyllic aspects over Drews Pond Wood to the front. Offered to the market with no onward chain.

- 2-double bedrooms
- End of terrace
- No onward chain
- Delightful aspects over Drews Pond Woods
- Beautifully presented throughout
- Refitted shower room
- Triple aspect reception room
- Idyllic walks on your doorstep
- Allocated parking for 1 vehicle
- Former hospital conversion

🔑 Leasehold

🏠 EPC Rating C



A well-presented 2-bedroom end of terrace home, situated in a delightful setting with charming aspects over Drews Pond Wood. This charming home offers a wealth of character features including high ceilings and large wooden sash windows. Offered to the market with no onward chain.

An entrance hall with under stair cupboard leads you through to a bright and spacious living/dining room, providing ample space for relaxation and entertaining. The kitchen is well-appointed, with space for further appliances and plenty of storage/workspace.

Upstairs, there are two well-proportioned bedrooms, including a generous main bedroom and a comfortable second bedroom, both serviced by a contemporary refitted shower room.

Externally, the property has the benefit of maintained communal gardens, perfect for enjoying the outdoors without the maintenance. There is 1 allocated parking space with the home and ample visitor parking available.

With its picturesque views, peaceful surroundings, and excellent presentation, this home is ideal for those seeking a tranquil lifestyle while remaining close to local amenities.

A wonderful opportunity to acquire a move-in ready home in a sought-after location.

Situation

Historic Devizes is bisected by the Kennet & Avon canal, part of a waterway joining London to Bristol and famed for its flight of twenty-nine locks, an engineering and aesthetic marvel walking distance from the town, and a paradise for canoeists, barges and anglers. Featuring a wealth of listed buildings and a weekly market, the bustling town enjoys a beautiful setting amidst Wiltshire's chalk downlands criss-crossed by ancient byways and prehistoric earthworks providing a scenic playground for walkers and cyclists. Cultural facilities include a museum, active theatre, cinema and vibrant live-music scene. The major centres of Bath, Salisbury, Swindon, Marlborough and Chippenham are all within a 30-mile radius.

Property information

We are advised all mains services are connected.

Tenure: Leasehold

Length of lease: 999 years from 1999. Service charge: £1,224 p.a which includes ground rent and buildings insurance.

Council tax band: C

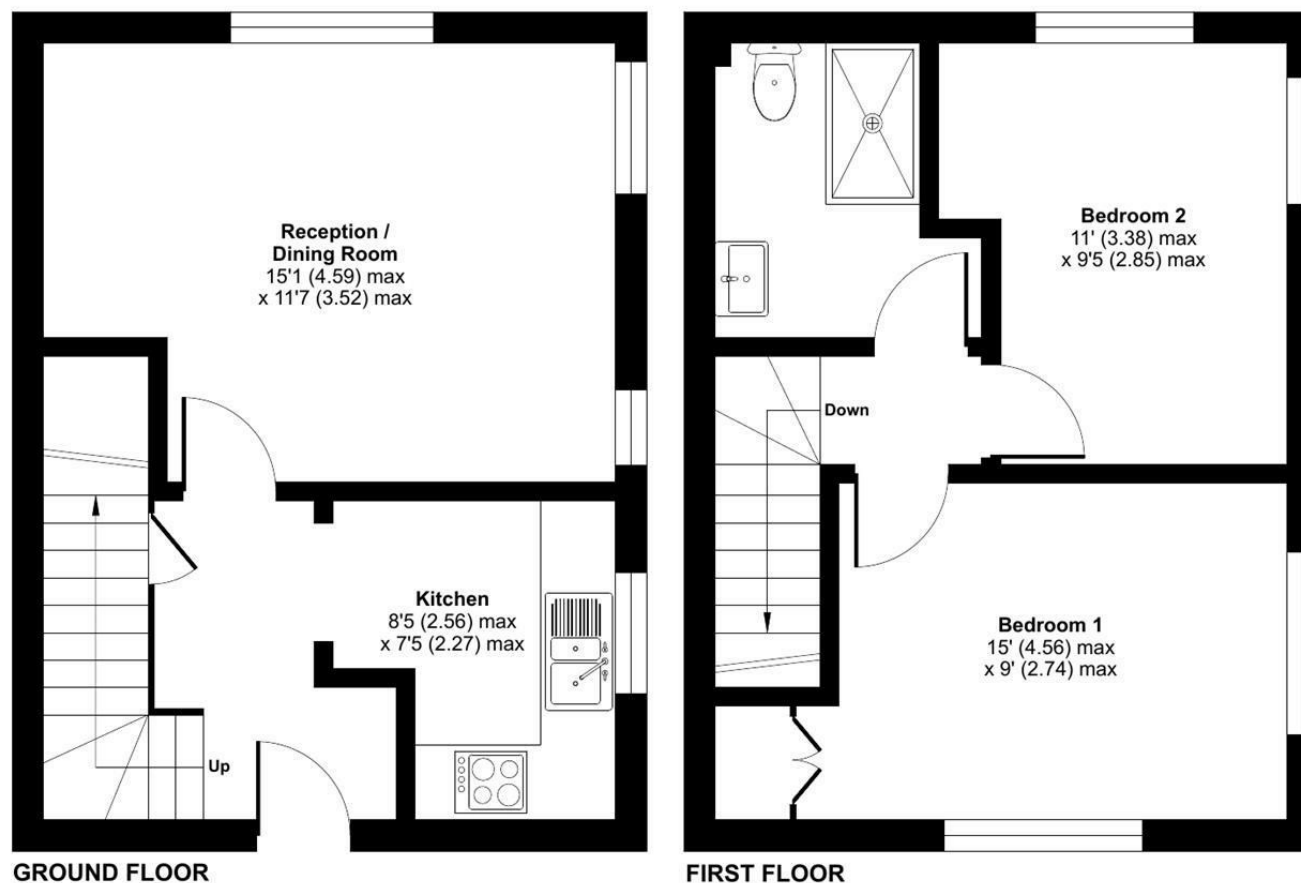
EPC rating: C



Bowes Court, Thomas Wyatt Road, Devizes, SN10

Approximate Area = 616 sq ft / 57.2 sq m

For identification only - Not to scale



Floor plan produced in accordance with RICS Property Measurement 2nd Edition, Incorporating International Property Measurement Standards (IPMS2 Residential). © nitchecom 2025. Produced for Strakers. REF: 1266324

Disclaimer These particulars, whilst believed to be accurate are set out as a general outline only for guidance and do not constitute any part of an offer or contract. Intending purchasers should not rely on them as statements of representation of fact, but must satisfy themselves by inspection or otherwise as to their accuracy. No person in this firm's employment has the authority to make or give any representation or warranty in respect of the property. All measurements and distances are approximate only. Your home is at risk if you do not keep up repayments on a mortgage or other loan secured on it.