



📍 57 Hillier Road, Devizes, Wiltshire, SN10 2FB

🏠 Guide Price £260,000

A well-presented and flexible 2/3 bedroom, former barracks conversion. With smart accommodation arranged across 3-floors, this characterful home is ready to move straight into, in a popular well-established residential area.

- 2/3 Bedrooms
- Flexible Accommodation Throughout
- Smartly Presented
- 2 Allocated Parking Spaces
- Former Barracks Conversion
- High Ceilings and Large Sash Windows
- Lovely Views
- Family Bathroom and En-suite
- Over 1000 sq ft

🏡 Freehold

🏠 EPC Rating C



A charming former barracks conversion on the outskirts of Devizes, this characterful 2/3-bedroom home is arranged over three-storeys, boasting high ceilings, large sash windows, and two allocated parking spaces.

Stepping inside, the entrance hall leads to a flexible reception room, currently used as a snug/family room but equally suited as a third bedroom. Towards the rear, the kitchen/dining room offers a range of wall and floor-mounted units, an electric oven, a gas-ring hob, space for further appliances, dining space and access to the rear courtyard. A convenient downstairs W/C completes the ground floor.

On the first floor, a bright and spacious 21'7ft x 8'11ft dual-aspect reception room is flooded with natural light, enjoying a lovely green outlook to the front. A family bathroom is also found on this level.

The top floor features two double bedrooms, with the principal bedroom benefitting from built-in storage and an en-suite shower room.

Externally, the property includes two allocated parking spaces and a low-maintenance rear courtyard with a decked seating area.

Situation

The property overlooks a pleasant green to the front with a small park and the canal running beyond it. The historic market town of Devizes has many amenities including town centre shopping, a leisure centre, schools for all ages, various supermarkets, a variety of shops, cinema, theatre and thriving weekly market. The historic Kennet & Avon Canal runs through the town providing fishing and walking facilities. The major centres of Bath, Salisbury, Swindon, Marlborough and Chippenham are all within a 30 mile radius.

Property information

We are advised all mains services are connected.

Agents note: There is a property management company for the estate with an annual service charge of £480.

Tenure: Freehold

Council tax band: D

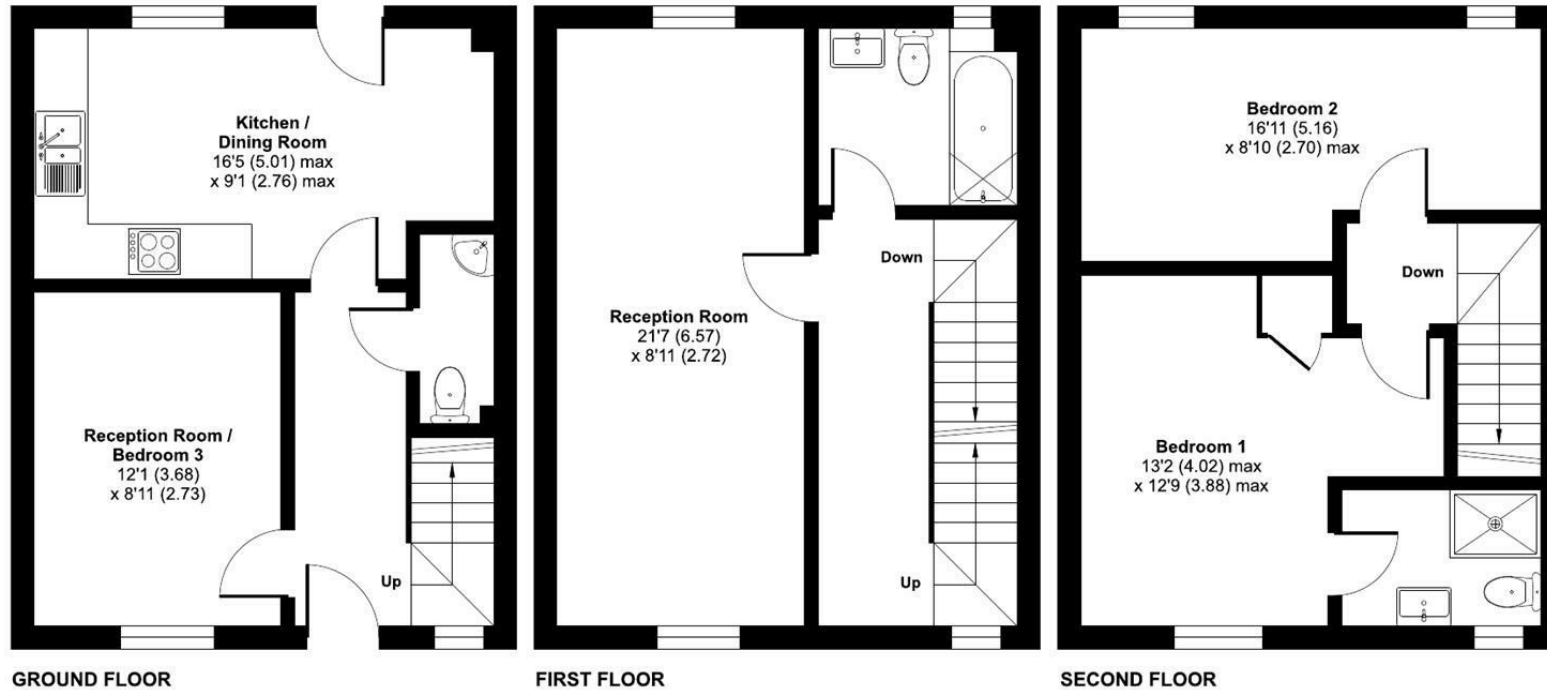
EPC rating: C



Hillier Road, Devizes, SN10

Approximate Area = 1080 sq ft / 100.3 sq m

For identification only - Not to scale



Floor plan produced in accordance with RICS Property Measurement 2nd Edition, Incorporating International Property Measurement Standards (IPMS2 Residential). © nichecom 2025. Produced for Strakers. REF: 1247755

Disclaimer These particulars, whilst believed to be accurate are set out as a general outline only for guidance and do not constitute any part of an offer or contract. Intending purchasers should not rely on them as statements of representation of fact, but must satisfy themselves by inspection or otherwise as to their accuracy. No person in this firms employment has the authority to make or give any representation or warranty in respect of the property. All measurements and distances are approximate only. Your home is at risk if you do not keep up repayments on a mortgage or other loan secured on it.