



📍 The New House High Street, Worton, Wiltshire, SN10 5RU

🏠 Offers In Excess Of £385,000

A well proportioned individually designed 4 bedroom family home set in this popular Wiltshire village with no onward chain.

- Attractive Double Fronted Detached House
- 4 Bedrooms
- 2 Reception Rooms
- Modern Kitchen With Separate Utility
- Contemporary Bathroom + En Suite
- Single Garage + Secure Gated Parking
- Gardens To Front & Rear
- Sought After Village Location
- No Onward Chain

🏡 Freehold

🏠 EPC Rating D



An attractive cottage style 4 bedroom detached modern home with a garage, parking for 3 cars and easy maintenance gardens in the lovely village of Worton that is within easy reach of Devizes. Offered with no onward chain, this house is ready to move straight in.

Internally, this individually designed double fronted family home offers a well balanced layout with good size rooms over 2 floors. From the front door, an entrance hall opens off to a 16ft dual aspect sitting room to the right hand side, with oak effect flooring, an inviting log burning stove with a wooden surround and sliding doors out to the rear garden. To the left of the hallway is a separate dual aspect dining room with a door into a 14ft kitchen that has a range of modern fitted units with oak effect worktops, an integrated fridge/freezer and an electric oven with 4 ring hob over. There is a useful utility room set behind the kitchen (that houses the oil fired boiler) plus a downstairs cloakroom. On the first floor, there are four bedrooms (3 doubles and 1 single), with an en suite shower room to the main bedroom, alongside the family bathroom.

Outside, a 5 bar gate opens on to a gravelled driveway with parking for up to 3 vehicles. There is a single garage with and up and over door and personal door to the side as well as a small Wendy House for children. The gardens run to the front, side and rear of the house with a decked sun terrace and pergola to the south facing rear, and lawns to the front and side.

Situation

The New House is situated in the centre of this popular village. Worton is located in the heart of Wiltshire about 3 miles from the historic market town of Devizes. Devizes caters for most day to day requirements whilst the larger centres of Salisbury, Swindon, Bath and Newbury are all within easy motoring distance. The M4 to the north and the A303 to the south provide fast road access to London and the West Country; main line rail services are available from Chippenham and Pewsey (Paddington just over an hour). Those with an interest in country and leisure pursuits are well catered for in the area and there is a good choice of both private and state schools in the region.

Property Information

Council Tax: Band E

Services: Mains water, drainage and electricity are all connected. Oil fired central heating.



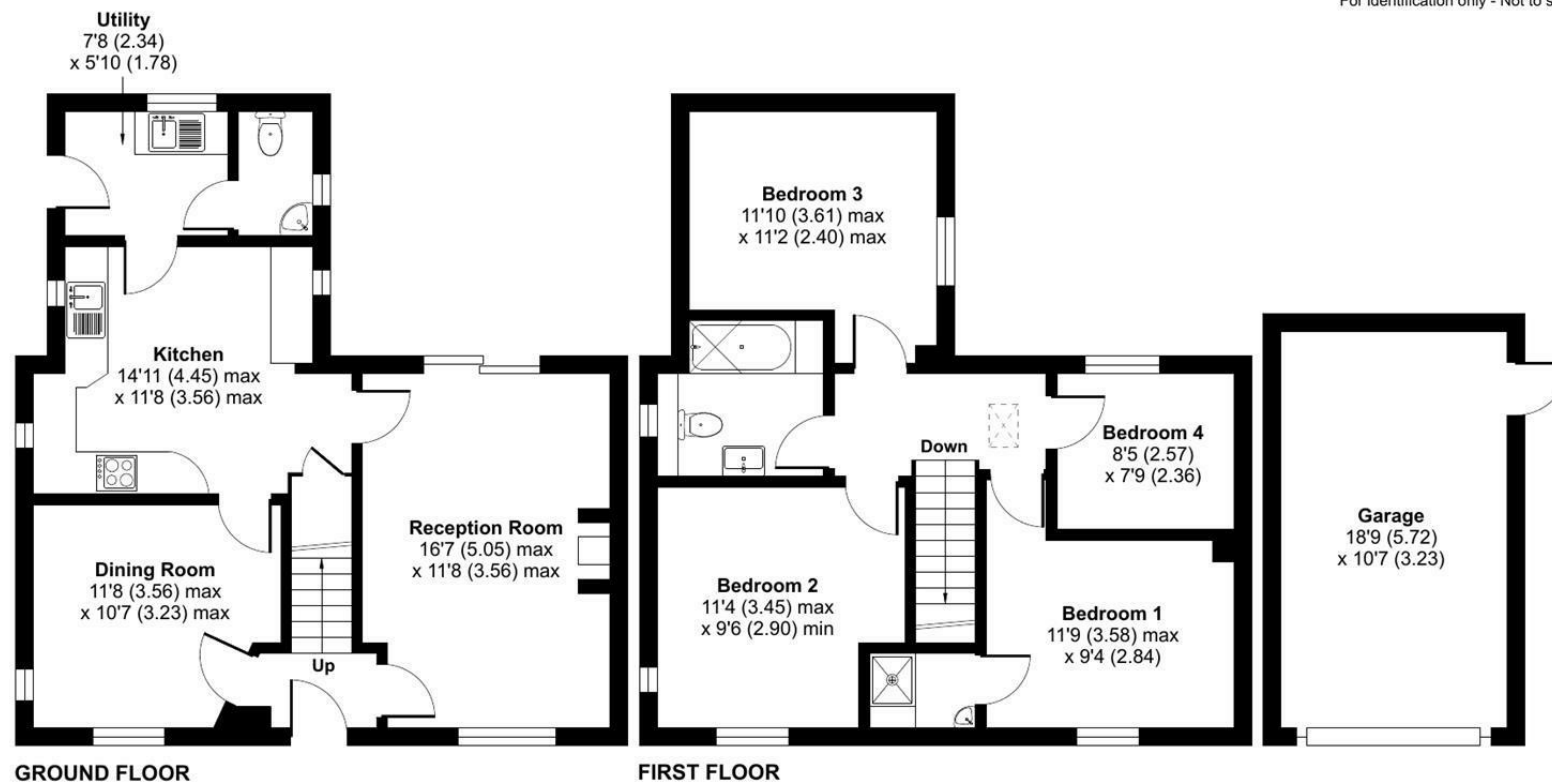
High Street, Devizes, SN10

Approximate Area = 1197 sq ft / 111.2 sq m

Garage = 199 sq ft / 18.5 sq m

Total = 1396 sq ft / 129.7 sq m

For identification only - Not to scale



 Floor plan produced in accordance with RICS Property Measurement 2nd Edition, Incorporating International Property Measurement Standards (IPMS2 Residential). © nitchcom 2024. Produced for Strakers. REF: 1207754

Disclaimer: These particulars, whilst believed to be accurate are set out as a general outline only for guidance and do not constitute any part of an offer or contract. Intending purchasers should not rely on them as statements of representation of fact, but must satisfy themselves by inspection or otherwise as to their accuracy. No person in this firm's employment has the authority to make or give any representation or warranty in respect of the property. All measurements and distances are approximate only. Your home is at risk if you do not keep up repayments on a mortgage or other loan secured on it.