



📍 67 Ryelease, Potterne, Devizes, Wiltshire, SN10 5NJ

🔗 Offers In Excess Of £200,000

A truly unique offering. This 1-bedroom semi-detached bungalow has been delightfully updated and extended by the current owner, boasting good presentation, a large garden and deceptively spacious accommodation.

- 1-bedroom
- Semi-detached bungalow
- Sought after village location
- Extended and updated by current owner
- Well-presented throughout
- Pretty front and rear gardens
- Reception room with log-burner
- Modern kitchen

🏠 Freehold

🏠 EPC Rating D



A 1-bedroom semi-detached bungalow, thoughtfully updated and extended by the current owner, offering more space than you might first expect.

Stepping inside, the entrance hallway includes a handy storage cupboard. Off to the right of the entrance hallway, a wonderfully spacious kitchen/dining/living room leads seamlessly into the 'orangery' extension. The kitchen is well-equipped with a range of wall and floor-mounted units, an integral double oven & grill, electric hob, and space for further appliances. The dining/living area is made cosy by a log burner, while the rear reception space benefits from an atrium-style roof, a large window overlooking the garden, and French patio doors leading outside.

The principal double bedroom enjoys an outlook to the rear garden and space for storage. A modern shower room completes the internal accommodation.

Externally, the front garden adds to the external charm, while the rear garden is a true delight—mostly laid to lawn with raised beds, a greenhouse, shed, and a patioed area with a pergola, perfect for enjoying those sunny mornings/evenings. On-street parking is available nearby.

Situation

Local village amenities are easily accessible on foot from the house which includes a church, a village hall, a cricket club, playing fields, and a convenience shop. The nearest town is Devizes, which is accessible by car in five minutes, or via the number 2 bus. Devizes is a popular market town, offering a range of shopping, entertainment and leisure facilities. The nearest primary and secondary schools are located in Devizes, as well as nearby villages including Market Lavington and Urchfont. Potterne is located in the heart of Wiltshire, which is within close proximity to popular local towns including Marlborough and Chippenham.

Property information

Economy 7 night storage heaters. We are advised mains water, electricity and drainage are connected.

Tenure: Freehold

EPC rating: D

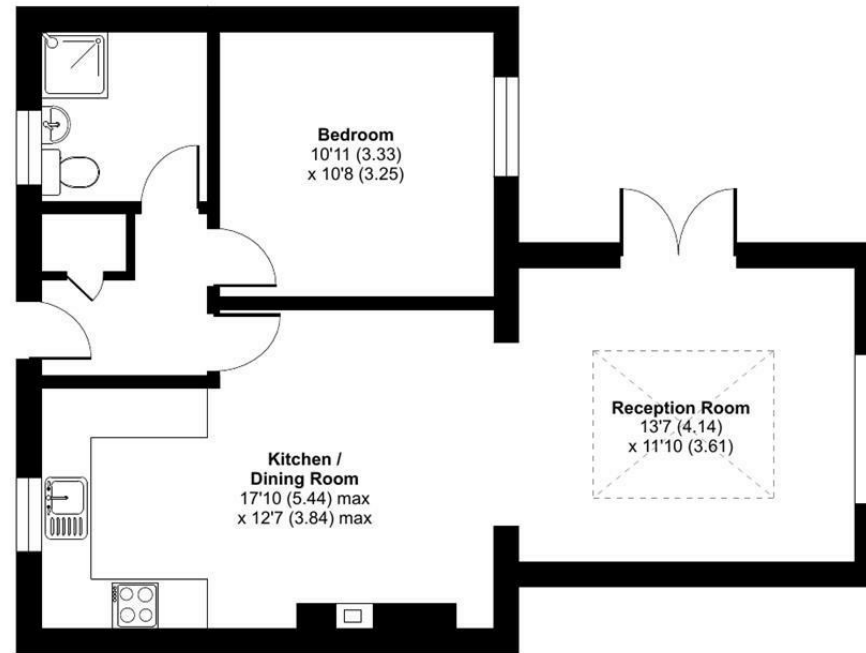
Council tax band: A



Ryeleaze, Potterne, Devizes, SN10

Approximate Area = 607 sq ft / 56.4 sq m

For identification only - Not to scale



GROUND FLOOR



Floor plan produced in accordance with RICS Property Measurement 2nd Edition, Incorporating International Property Measurement Standards (IPMS2 Residential). © nichecom 2025. Produced for Strakers. REF: 1250935

Disclaimer: These particulars, whilst believed to be accurate are set out as a general outline only for guidance and do not constitute any part of an offer or contract. Intending purchasers should not rely on them as statements of representation of fact, but must satisfy themselves by inspection or otherwise as to their accuracy. No person in this firm's employment has the authority to make or give any representation or warranty in respect of the property. All measurements and distances are approximate only. Your home is at risk if you do not keep up repayments on a mortgage or other loan secured on it.