



📍 Ashleigh Salisbury Street, Devizes, SN10 1QA

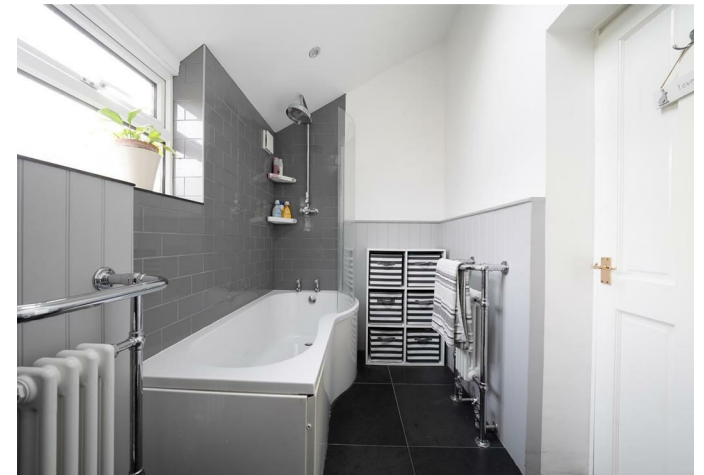
🏠 Guide Price £325,000

An attractive bay fronted 3 bedroom Victorian family home with a good sized private garden.

- Popular Area of Town Near The Canal
- Delightful Period Home
- 3 Bedrooms
- 2 Receptions
- Stylish En Suite & Refitted G/F Bathroom
- Modern Kitchen
- Private Rear Garden
- Scope For Loft Conversion
- Convenience Store- |Just A Stone's Throw Away
- Well Presented Interior

🏡 Freehold

🏠 EPC Rating D



A delightful 3 bedroom semi detached period home set on a small popular street close to town and the famous Kennet and Avon Canal.

Internally the beautifully presented interior has a light hallway that opens into the charming bay fronted sitting room with an inviting log burning stove. There is a good sized separate dining room with a further fireplace and wood effect flooring. From here, doors lead off to a useful utility/side conservatory and a modern kitchen with tiled flooring, that is well equipped with an integrated fridge/freezer, dishwasher, double oven and a 4 ring gas hob. A sleek and stylish refitted ground floor bathroom completes the ground floor. On the first floor there are three double bedrooms, with the principal bedroom enjoying a fully tiled contemporary en suite shower room. The large loft space with skylight offers further scope to convert to additional accommodation subject to planning. Further benefits include UPVC double glazing and gas heating.

Externally there is a decent sized private rear garden mainly laid to lawn, with an extended patio sun terrace, plus a side gate that leads back to the front of the house where there is a wood store.

Character properties in this area are always very popular, so an early viewing is highly recommended.

Situation

Salisbury Street is a small charming street of similar properties that is well placed for the town and the canal (which is only a stone's throw away). There is also a very useful Spar store for everyday conveniences just across the street on the Bath Road. The historic market town of Devizes has many amenities including town centre shopping, a leisure centre, schools for all ages, various supermarkets, a variety of shops, cinema, theatre and thriving weekly market. The historic Kennet & Avon Canal runs through the town providing fishing and walking facilities. The major centres of Bath, Salisbury, Swindon, Marlborough and Chippenham are all within a 30 mile radius.

Property Information

Services: All mains services are connected.

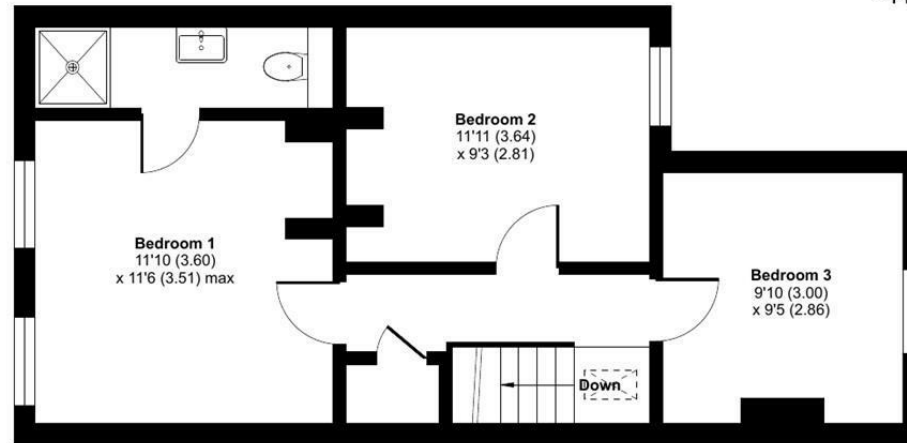
Council Tax: Band C



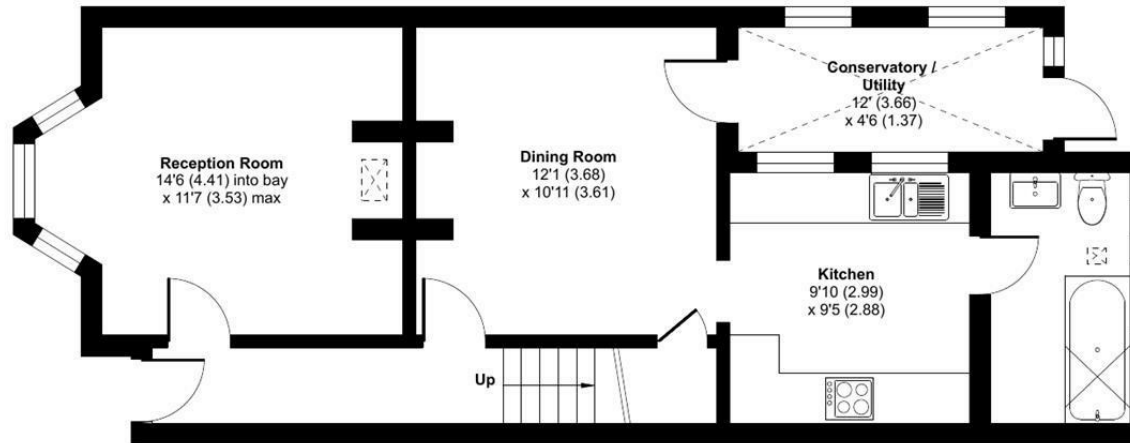
Ashleigh, Salisbury Street, Devizes, SN10

Approximate Area = 1088 sq ft / 101 sq m

For identification only - Not to scale



FIRST FLOOR



GROUND FLOOR



Floor plan produced in accordance with RICS Property Measurement 2nd Edition, Incorporating International Property Measurement Standards (IPMS2 Residential). © nitchecom 2024. Produced for Strakers. REF: 1221189

Disclaimer These particulars, whilst believed to be accurate are set out as a general outline only for guidance and do not constitute any part of an offer or contract. Intending purchasers should not rely on them as statements of representation of fact, but must satisfy themselves by inspection or otherwise as to their accuracy. No person in this firm's employment has the authority to make or give any representation or warranty in respect of the property. All measurements and distances are approximate only. Your home is at risk if you do not keep up repayments on a mortgage or other loan secured on it.