



📍 Sarsen House, 6 Silbury Court Beckhampton, Marlborough, SN8 1QJ

🏠 £665,000

A truly charming, beautifully finished and expansive property in the highly sort after village of Beckhampton

- Four Bedroom Family Home
- Garage and Parking
- Walking Distance to Village Pub, Avebury Stone Circle and Silbury Hill
- Charcter Features and High Ceilings
- Superb Standard of Finish Throughout
- Large, Expansive and Child Friendly Garden
- Beautiful Surrounding Countryside Walks
- Extended To Rear
- An Abundance of Space in Loft Ready for Conversion
- Viewings Highly Recommended

🏠 Freehold

🏠 EPC Rating B



Sarsen House, located at 6 Silbury Court in the picturesque village of Beckhampton, near Avebury, is a substantial 2,294 sq. ft. home that combines period charm with modern comfort. Rich in character, the property boasts exposed beams and high ceilings, creating a bright and airy atmosphere throughout.

The ground floor features a cozy sitting room with open fireplace, ideal for relaxing on chilly evenings. A convenient downstairs WC adds practicality, and the rear of the house has been thoughtfully extended to create a stunning galley-style kitchen with a spacious dining area. The kitchen is well-equipped with a range of units, built-in appliances, wooden work surfaces, and a classic Victorian-style sink. A breakfast bar provides a casual dining option, while the kitchen opens into a beautiful garden-facing orangery, perfect for enjoying the outdoor views. A utility room, located just off the kitchen, offers additional storage and access to the integral garage.

Upstairs, the property offers four generously sized double bedrooms. The primary bedroom benefits from an en-suite bathroom, while a second bedroom features an en-suite shower room. The remaining two bedrooms share a well-appointed family bathroom, ensuring comfort for all residents. The home also includes a large loft space with ample potential for conversion, providing the opportunity for future expansion.

The exterior of Sarsen House is equally impressive. A large enclosed garden, mostly laid to lawn, offers plenty of space for outdoor activities and relaxation. The patio area, ideal for summer BBQs, overlooks mature trees, vibrant flower beds, and a children's play area in the garden. To the front, the property provides parking for multiple vehicles, adding convenience to this charming family home.

Set in the Wiltshire countryside, Sarsen House blends traditional character with modern living, close to historic Avebury.

Location

Beckhampton is a peaceful village in Wiltshire, England, situated just 1 mile west of the Avebury Stone Circle. It enjoys excellent transport links via the A4, connecting it to nearby towns like Marlborough (6 miles) and Devizes (8 miles), with the M4 and rail services from Pewsey and Swindon also close by. The village is surrounded by key historical landmarks, including West Kennet Long Barrow and the iconic Silbury Hill, both just minutes away. A notable local feature is the Waggon and Horses pub, a charming, traditional inn offering a warm welcome to visitors exploring this ancient and scenic area.

Property Information

Tenure: Freehold
Local Authority: Wiltshire Council
All mains services connected
Oil central heating
Council Tax Band: F
EPC Rating: B



Silbury Court, Beckhampton, Marlborough, SN8

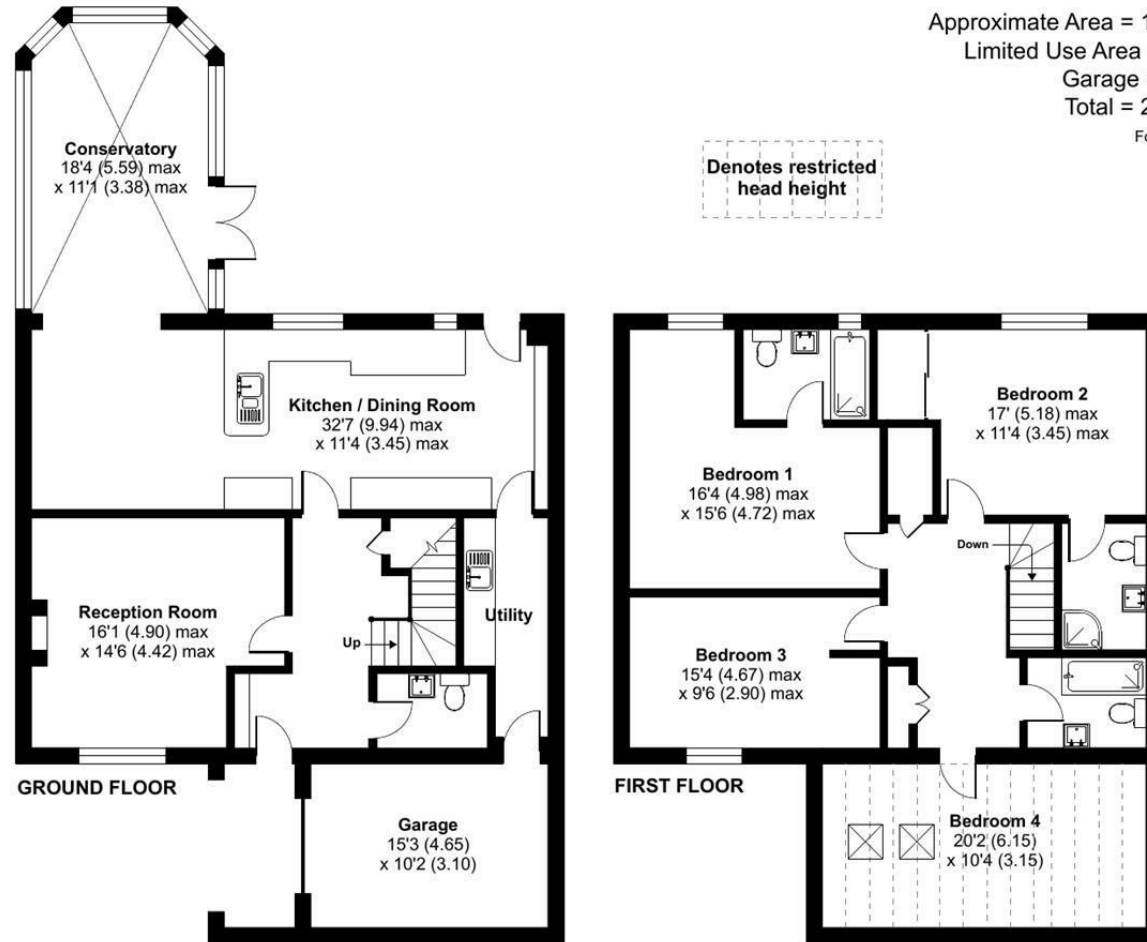
Approximate Area = 1928 sq ft / 179.1 sq m

Limited Use Area = 211 sq ft / 19.6 sq m

Garage = 155 sq ft / 14.4 sq m

Total = 2294 sq ft / 213.1 sq m

For identification only - Not to scale



Floor plan produced in accordance with RICS Property Measurement Standards incorporating International Property Measurement Standards (IPMS2 Residential). © nichecom 2024. Produced for Strakers. REF: 1193262

Disclaimer These particulars, whilst believed to be accurate are set out as a general outline only for guidance and do not constitute any part of an offer or contract. Intending purchasers should not rely on them as statements of representation of fact, but must satisfy themselves by inspection or otherwise as to their accuracy. No person in this firm's employment has the authority to make or give any representation or warranty in respect of the property. All measurements and distances are approximate only. Your home is at risk if you do not keep up repayments on a mortgage or other loan secured on it.