



📍 15 Beechfield Drive, Devizes, Wiltshire, SN10 2SW

🏠 £150,000

A well-presented, 2-bedroom first floor apartment, situated in the popular Marina area of Devizes, ideal for first time buyers.

- 2-double bedrooms
- NO ONWARD CHAIN
- 2 allocated parking spaces
- Well-presented throughout
- Large reception room with Juliet balcony
- Outlook to the canal
- Ideal for first time buyers
- First floor apartment

🏠 Leasehold - Share of Freehold

🏠 EPC Rating C



A spacious, first floor, 2-bedroom apartment in a well-established residential area of Devizes. Perfect for first time buyers, looking to take their first step on the property ladder. Offered to the market with no onward chain.

Walking in through the front door, you are met by an entrance hallway, providing storage through a cupboard and leading you to the rooms in the apartment. To the right hand side of the entrance hallway, 2-double bedrooms, both of which have nice outlooks over the Kennet & Avon Canal.

The large dual aspect living/dining room is flooded with natural light, has a storage cupboard and a Juliet balcony. Through an open arch, you access the modern kitchen with integral electric oven & electric hob, plus space for further appliances. A family bathroom with a shower over a 'p' shape bath completes the internal accommodation.

Externally, 2-tandem parking spaces come with the apartment. There are lovely canal walks just on your doorstep while being close to ample amenities and 'The Hourglass' public house.

Situation

The property is located in the popular Marina area with canal walks, The Hourglass public house and Devizes Marina Café all conveniently placed on your doorstep. The historic market town of Devizes has many amenities including town centre shopping, a leisure centre, schools for all ages, various supermarkets, a variety of shops, cinema, theatre and thriving weekly market. The historic Kennet & Avon Canal runs through the town providing fishing and walking facilities. The major centres of Bath, Salisbury, Swindon, Marlborough and Chippenham are all within a 30 mile radius.

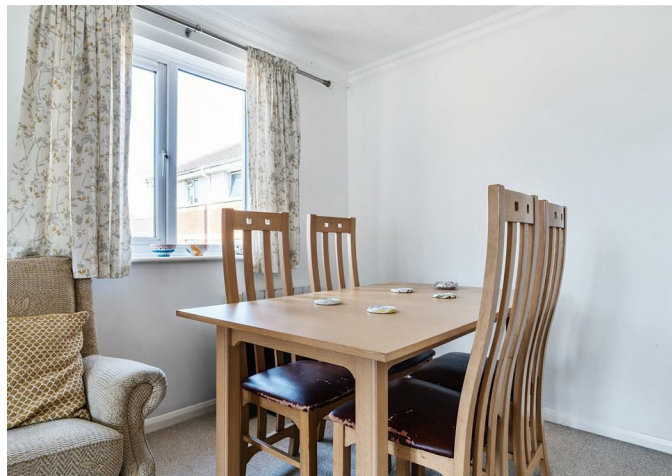
Property Information

Agents note: Each flat within the block are 1/6 owners of the freehold. The new owner will then become a director of the management company.

Tenure: Leasehold - share of freehold.

999 year lease from 1996.

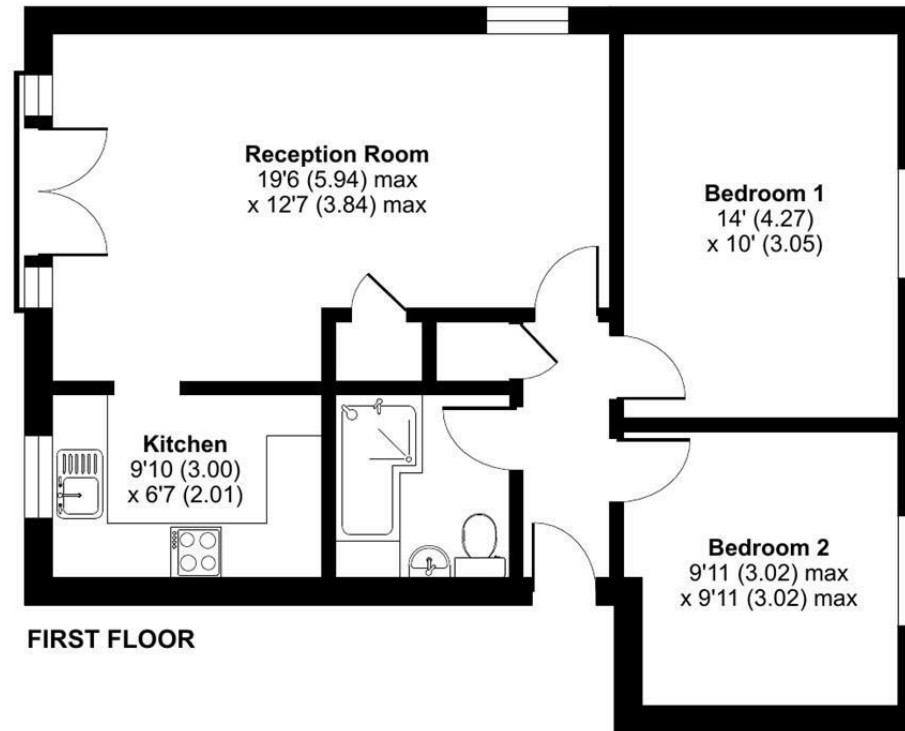
Annual service charge: £1289 p.a



Beechfield Drive, Devizes, SN10

Approximate Area = 655 sq ft / 60.8 sq m

For identification only - Not to scale



Floor plan produced in accordance with RICS Property Measurement Standards incorporating International Property Measurement Standards (IPMS2 Residential). © nitchecom 2024. Produced for Strakers. REF: 1181543

Disclaimer These particulars, whilst believed to be accurate are set out as a general outline only for guidance and do not constitute any part of an offer or contract. Intending purchasers should not rely on them as statements of representation of fact, but must satisfy themselves by inspection or otherwise as to their accuracy. No person in this firms employment has the authority to make or give any representation or warranty in respect of the property. All measurements and distances are approximate only. Your home is at risk if you do not keep up repayments on a mortgage or other loan secured on it.