



📍 Windrush Cottage Bourton, Devizes, Wiltshire, SN10 2LQ

🔗 Guide Price £700,000

A simply gorgeous country cottage, presented in immaculate order throughout, with a superb garden, garaging, parking, and open countryside views.

- 4 Double Bedrooms
- 3 Reception Rooms
- Stunning Gardens (0.22 Acre Plot)
- Stylish Refitted Kitchen
- Refitted Bathroom & En Suite
- Character Features- Exposed Beams & Open Fireplace
- Grade II Listed
- Lovely Countryside Views
- Highly Sought After Rural Hamlet
- Semi Detached Cottage

🏠 Freehold

📊 EPC Rating



Nestling in a very friendly rural hamlet at the foot of the Wessex Downs hills in the Pewsey Vale, we offer for sale a beautiful 4 double bedroom semi detached thatched cottage with a stunning garden.

Extremely well presented throughout, the characterful accommodation comprises an entrance hall with downstairs cloakroom, and a magnificent recently refitted kitchen/dining room with oak floor, solid granite worktops, a 'Range' style cooker and quality integrated appliances including a fridge/freezer, dishwasher, washer dryer and a wine cooler. The delightful sitting room features exposed ceiling beams and a wonderful open fire. From this room an opening leads into a flexible dining room/snug/study. To the first floor, a light landing with exposed wall timbering has wooden panelled latched doors off to the dual aspect principle bedroom which benefits from a stylish newly refitted en-suite shower room and bespoke wardrobes. There are 3 further double bedrooms complemented by a newly refitted family bathroom.

Truly a haven of wildlife in the most tranquil location, the garden is a joy to behold, with manicured lawns set off by glorious well stocked flower borders and a brand new charming summerhouse to sit and enjoy the views over the garden. There is a single garage with a useful additional workshop to the rear with power, off street parking for 4/5 cars, plus a new garden shed, log store and bin area. South facing, the garden enjoys open countryside views, the sunshine all day, and features a number of seating areas and beautiful trees. There is an abundance of fantastic country walks immediately from the property, which really must be viewed to be fully appreciated.

Situation

Bourton is a delightful little hamlet tucked along a 'no through' lane just off of the popular village of Bishop's Cannings. This beautiful village is nestled in the Pewsey Vale (which is an AONB - an Area of Outstanding Natural Beauty) and has a thriving community and boasts an excellent primary school, a public house, a village farm shop, a church and village hall. North Wilts Golf Club is a 3 minute drive door to door. The historic market town of Devizes is located only three miles away and has many amenities including town centre shopping, a leisure centre, schools for all ages, various supermarkets, a variety of shops, cinema (currently under renovation), theatre and thriving weekly market. The historic Kennet & Avon Canal runs through the town providing fishing and walking facilities. The picturesque market town of Marlborough is a mere 15 minute drive and the major centres of Bath, Salisbury, Swindon, Chippenham and are all within a 30 mile radius, and each with mail line rail links.

Property Information

Council Tax: Band F

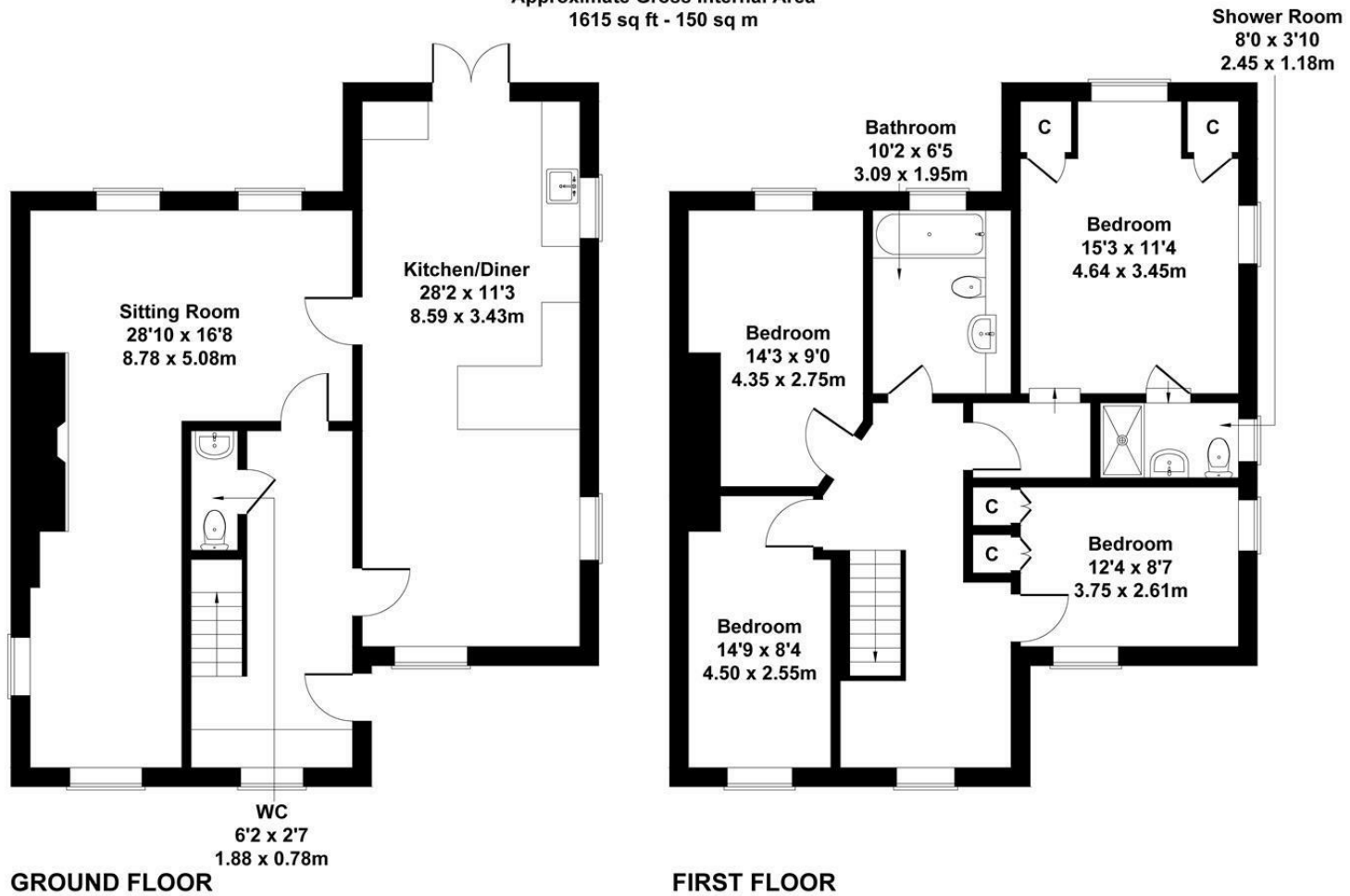
Services: Oil fired central heating, mains water, drainage and electricity. The lane up to the cottage is owned by The Crown. Windrush cottage and 4 other homes have vehicular access to it. Grade II Listed. Rethatched in 2017.

Agents Note: Under Section 21 of the Estate Agents Act we hereby give notice that the current vendor of this property is an employee of Strakers.



Windrush Cottage

Approximate Gross Internal Area
1615 sq ft - 150 sq m



Not to Scale. Produced by The Plan Portal 2024
For Illustrative Purposes Only.

Disclaimer: These particulars, whilst believed to be accurate are set out as a general outline only for guidance and do not constitute any part of an offer or contract. Intending purchasers should not rely on them as statements of representation of fact, but must satisfy themselves by inspection or otherwise as to their accuracy. No person in this firm's employment has the authority to make or give any representation or warranty in respect of the property. All measurements and distances are approximate only. Your home is at risk if you do not keep up repayments on a mortgage or other loan secured on it.