



📍 3 The Cedars Littleworth, Pewsey, SN9 5LF

🏠 £750,000

An incredibly charming three bedroom detached set on a lovely plot with exceptional views to rear

- Three Bedroom Detached Bungalow
- Timber Framed Construction
- Quiet Location on Outskirts of Village
- 1430 SqFt in Total
- Garage and Driveway Parking
- Beautifully Maintained Gardens
- Summer House in Garden
- Close to Pewsey Train Station
- Ground Source Heat Pump and Underfloor Heating
- Solar Panels to Roof

🏡 Freehold

🏠 EPC Rating D



The modern amenities and features of Nevern, 3 The Cedars certainly add to its appeal and make it a truly inviting home. The open-plan kitchen and dining area provide a spacious and sociable environment, perfect for entertaining guests or simply enjoying meals with family. The seamless flow between these areas creates a welcoming atmosphere where everyone can gather and create cherished memories together.

Meanwhile, the cozy living room with its fireplace offers a comfortable retreat for relaxation and unwinding. Whether it's curling up with a book on a chilly evening or enjoying quality time with loved ones, this space provides the perfect backdrop for family meets. Double glazed throughout, the home retains a constant temperature throughout the year.

Spanning 1430 SqFt, the spacious layout of the property ensures that residents have plenty of room to stretch out and relax, both indoors and outdoors. Whether you're unwinding in the comfort of the living spaces or enjoying the serenity of the outdoor surroundings, there's ample space to create your own sanctuary and escape from the hustle and bustle of everyday life.

The outdoor timber workshop/shed and insulated summer house offer additional space for hobbies or simply unwinding amidst the beauty of nature. Inside, the home strikes a perfect balance between communal open-plan spaces and private retreats. The master bedroom with its en-suite, along with two additional double bedrooms and a spacious family bathroom, ensures that every member of the family has their own comfortable space to call their own. The large spacious hallway makes for a warm welcome on entering the home.

Outside the property is perfectly positioned in the centre of the plot. There is a gravel driveway accommodating several vehicles and a single attached garage which could easily be converted. The mature and established gardens offer a variety of trees, shrubs and flower beds with incredible views over fields to rear and upto Martinsell Hill

Location

Nevern, 3 The Cedars is situated in the small rural hamlet of Littleworth, just north of the better know village of Milton Lilbourne. The area is well known for its unspoilt small villages and hamlets amongst the beautiful, gently rolling countryside of the Vale of Pewsey. There is immediate access to wonderful walking, riding and cycling as well as the Kennet and Avon canal nearby. Milton Lilbourne is within a five minute walk and offers a parish church and village hall. The larger village of Pewsey is just over two miles away and enjoys a broad ranges of amenities including supermarket, doctors and dental surgeries, chemist, cafes, shops, and range of sports clubs. There is also a leisure centre with gym and swimming pool. Pewsey railway station has trains directly into London Paddington in about an hour. Easy access by car into Marlborough c.15 minutes.

For schooling, the Easton Royal Academy (primary) under 2 miles away is affiliated with St Johns Academy, Marlborough (senior school). Both excellent options. For those interested in independent education, again excellent options with St Francis prep, Pewsey and Dauntsey's and Marlborough College, all within easy reach.

Property Information

Tenure: Freehold

EPC Rating: D

Services: All mains services are connected. Ground Source Heat Pump installed in 2010 and Solar Panelling to roof installed in 2011.

Timber Frame Construction with Oak Panelling

Conservation Area

Council Tax: Band: C



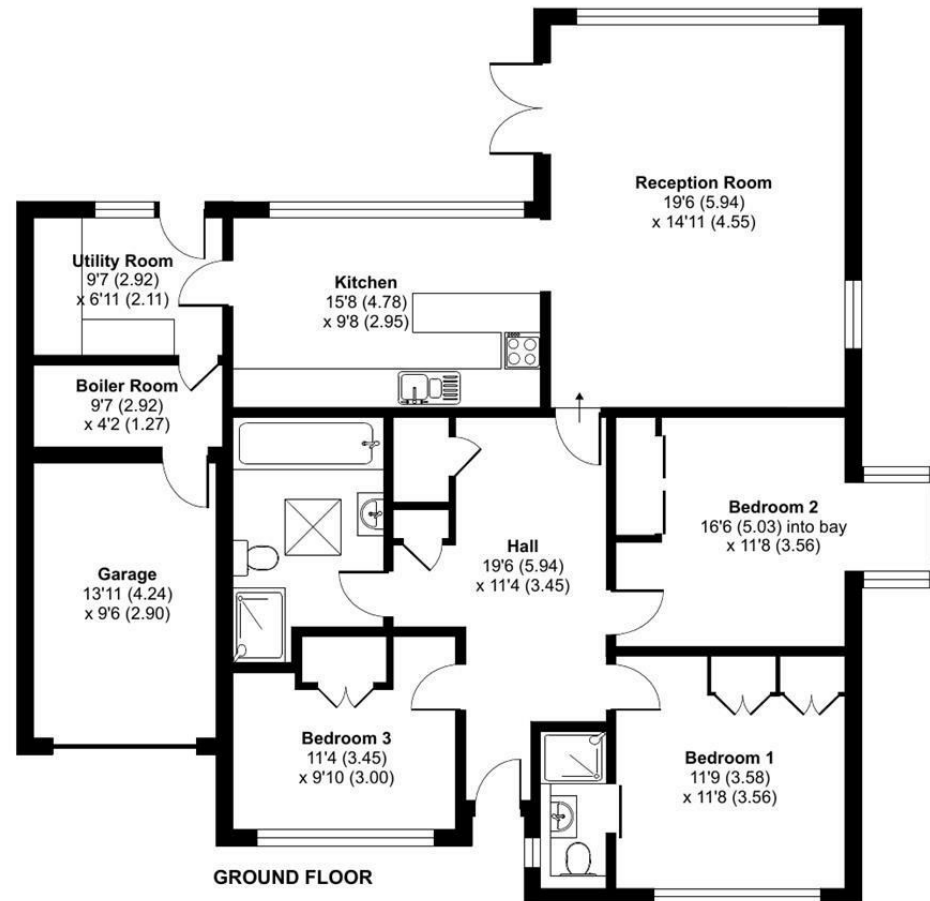
Cedars, Littleworth, Pewsey, SN9

Approximate Area = 1299 sq ft / 120.7 sq m

Garage = 131 sq ft / 12.2 sq m

Total = 1430 sq ft / 132.8 sq m

For identification only - Not to scale



Floor plan produced in accordance with RICS Property Measurement Standards incorporating International Property Measurement Standards (IPMS2 Residential). © nitchecom 2024. Produced for Strakers. REF: 1126416

Disclaimer These particulars, whilst believed to be accurate are set out as a general outline only for guidance and do not constitute any part of an offer or contract. Intending purchasers should not rely on them as statements of representation of fact, but must satisfy themselves by inspection or otherwise as to their accuracy. No person in this firm's employment has the authority to make or give any representation or warranty in respect of the property. All measurements and distances are approximate only. Your home is at risk if you do not keep up repayments on a mortgage or other loan secured on it.