



📍 35 Chantry Court, Devizes, Wiltshire, SN10 1BH

🏠 £75,000

A modern, 1-bedroom, second floor, over 55's apartment situated in the popular Chantry Court with a lovely green outlook. All the amenities Devizes has to offer are just on your doorstep.

- 1-Bedroom Apartment
- Second Floor
- Warden Controlled Apartments
- Modern Refitted Bathroom
- Idyllic Green Outlook
- Warmed By Electric Heating
- Close To Town Centre
- Communal Lounges & Rooftop Terrace Available

🏠 Leasehold

🏠 EPC Rating B



Located in the centre of Devizes, Chantry Court was built in the 1980s and provides private yet warden controlled accommodation specifically designed for the over 55's.

This first floor apartment provides accommodation to include an entrance hall, with useful storage cupboards, leading off to a living room with a bay-fronted window, double bedroom and refitted shower room. All rooms come complete with security tags which can be pulled should residents need immediate assistance. The property benefits further from night storage heating and double glazing.

Within Chantry Court, there is a residents lounge, guest suite, residents car park (non-allocated) and roof top sun terrace affording superb views over the town.

Situation

The historic market town of Devizes has many amenities including town centre shopping, a leisure centre, schools for all ages, various supermarkets, a variety of shops, cinema, theatre and thriving weekly market. The historic Kennet & Avon Canal runs through the town providing fishing and walking facilities. The major centres of Bath, Salisbury, Swindon, Marlborough and Chippenham are all within a 30 mile radius.

Property Information

Services: Mains electricity, water and drainage, electric night storage heating.

Council tax band: A.

Tenure: Leasehold; Combined ground rent and management charge of £206.12 per month. Electricity and water are payable additionally. Lease 99yrs from 1987.

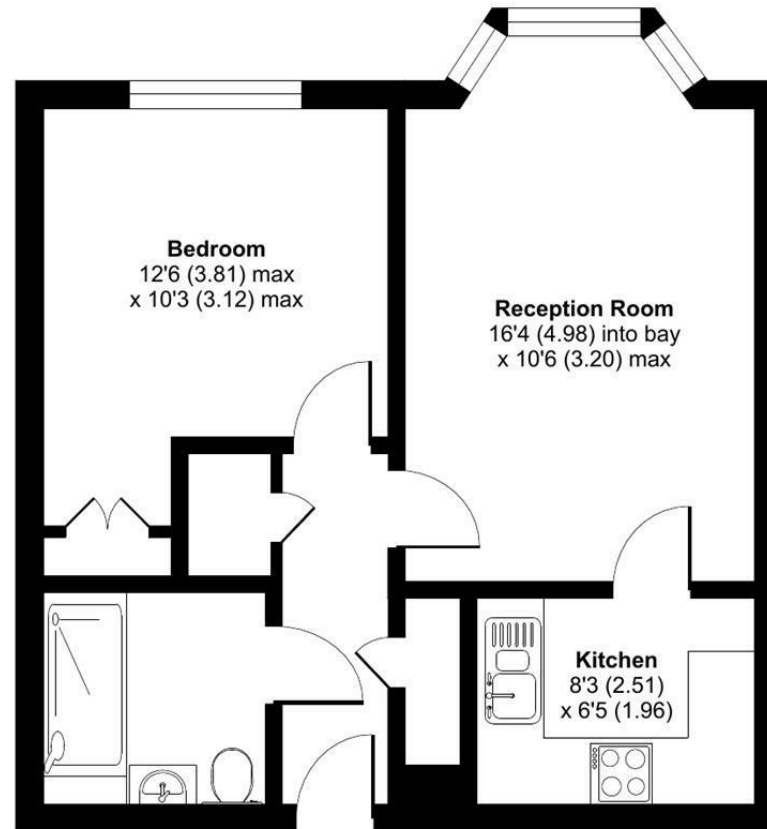
EPC Rating: B



Chantry Court, New Park Street, Devizes, SN10

Approximate Area = 456 sq ft / 42.3 sq m

For identification only - Not to scale



SECOND FLOOR



Floor plan produced in accordance with RICS Property Measurement Standards incorporating International Property Measurement Standards (IPMS2 Residential). © nitchecom 2024. Produced for Strakers. REF: 1096094

Disclaimer These particulars, whilst believed to be accurate are set out as a general outline only for guidance and do not constitute any part of an offer or contract. Intending purchasers should not rely on them as statements of representation of fact, but must satisfy themselves by inspection or otherwise as to their accuracy. No person in this firms employment has the authority to make or give any representation or warranty in respect of the property. All measurements and distances are approximate only. Your home is at risk if you do not keep up repayments on a mortgage or other loan secured on it.