



Indicative CGI image of The Stables

Robin King | Estate Agents

01934 876226
www.robin-king.com



THE STABLES
Plot 2 - Paddock Rise



PADDOCK RISE

BLAGDON | NORTH SOMERSET

THE STABLES

Plot 2 - Paddock Rise

Option 1 - Room Dimensions

Ground Floor

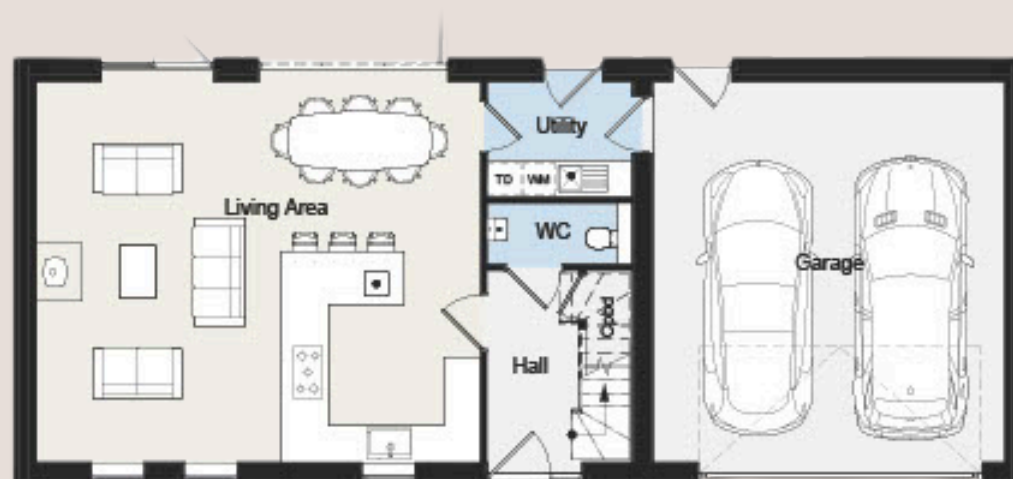
Kitchen/Living/Diner	7.58 x 6.50m
Utility	2.66 x 1.97m
Garage	6.00 x 6.50m

First Floor

Bedroom 1	4.20 x 3.95m
Dressing Room	2.50 x 2.48m
En-suite 1	1.60 x 2.48m
Bedroom 2	6.18 x 3.21m
En-suite 2	1.60 x 2.48m
Bedroom 3	5.23 x 3.22m
Bedroom 4	3.29 x 2.48m
Bedroom 5/Study	3.29 x 2.56m
Bathroom	3.43 x 2.10m

Total Exc. garage 170 Sq m/1,829 Sq ft

Option 1 - Floor plan



The floorplans shown here are example floor plans that have been devised to maximise space and layout. Should an alternative layout be required, these can be tailored to suit your specific requirements

DISCLAIMER: The dimensions given are maximum and approximate, taken from the widest part of each room and scaled down from the architects plans. These dimensions may vary based on the internal finish. Furniture measurements should only be taken from the completed property. These details are believed to be correct however neither the developer or the agent accept any liability whatsoever for any misrepresentation made either in these details or orally. Furniture is shown for indicative purposes only. Fitted wardrobes are not included. The images used throughout this brochure are for illustrative purposes only and may not reflect the actual style, layout and finish of the completed properties.



PADDOCK RISE

BLAGDON | NORTH SOMERSET

THE STABLES

Plot 2 - Paddock Rise

Option 2 - Room Dimensions

Ground Floor

Living Room	4.20m x 6.50m
Kitchen/Dining	5.90 x 6.50m
Utility	1.80 x 2.20m
WC	1.26 x 1.70m
Garage	3.50 x 6.50m

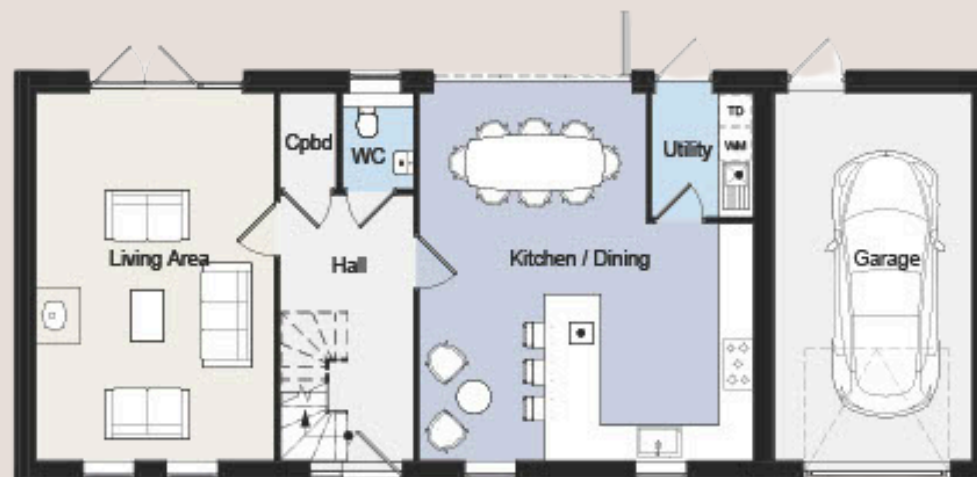
First Floor

Bedroom 1	4.20 x 3.76m
Dressing Room	2.50 x 2.64m
En-suite 1	1.60 x 2.64m
Bedroom 2	6.18 x 3.19m
En-suite 2	1.60 x 2.44m
Bedroom 3	4.58 x 3.22m
Bedroom 4	3.58 x 2.64m
Bedroom 5/Study	3.29 x 2.46m
Bathroom	3.43 x 2.46m

Total Exc. garage 186 Sq m/2,002 Sq ft

The floorplans shown here are example floor plans that have been devised to maximise space and layout. Should an alternative layout be required, these can be tailored to suit your specific requirements

Option 2 - Floor plan



DISCLAIMER: The dimensions given are maximum and approximate, taken from the widest part of each room and scaled down from the architects plans. These dimensions may vary based on the internal finish. Furniture measurements should only be taken from the completed property. These details are believed to be correct however neither the developer or the agent accept any liability whatsoever for any misrepresentation made either in these details or orally. Furniture is shown for indicative purposes only. Fitted wardrobes are not included. The images used throughout this brochure are for illustrative purposes only and may not reflect the actual style, layout and finish of the completed properties.



THE PADDOCKS

BLAGDON | NORTH SOMERSET

COLN
Signature
HOMES

Robin King | Estate
Agents

01454 301 500
www.colnsignaturehomes.co.uk

01934 876 226
www.robin-king.com