



11 Plum Tree Close

Winscombe, Winscombe

Charming 3 bed detached bungalow in Winscombe village. Approx. 1131 sq. ft. accommodation with garage. Large boot room, 3 bedrooms, spacious living area, well-equipped kitchen, wraparound garden, ample parking. Close to amenities and ideal for single-story living.

Council Tax band: D

Tenure: Freehold

EPC Energy Efficiency Rating: C

EPC Environmental Impact Rating:

- APPROX 1131 SQ. FT ACCOMODATION AND GARAGE
- DETACHED BUNGALOW
- 3 BEDROOMS
- SITTING/DINING ROOM
- SHOWER ROOM WITH SEPARATE TOILET
- WRAPAROUND GARDEN
- SOUGHT AFTER VILLAGE LOCATION
- NO ONWARD CHAIN

Location

The village of Winscombe's amenities include a good range of shops, takeaways, thriving village hall and public house. For the commuter there is easy access to the A38 and the M5 motorway giving access to Bristol and M4 London as well as a mainline railway station at Yatton. The property is in the catchment area for Churchill Academy and Sixth Form plus private schooling is available at nearby Sidcot or Bristol.





11 Plum Tree Close

Winscombe, Winscombe

Introducing this charming 3 bedroom detached bungalow in the sought-after village location of Winscombe. 11 Plum Tree Close is ideal for those seeking single storey living within level walking distance of the village. Boasting approximately 1131 sq. ft of accommodation and a garage, this detached bungalow is a rare find in the market.

Upon entering, the property has a large boot room with ample storage space for coats and shoes and provides access to the sunroom and the main hallway. Heading in to the hallway on the right hand side is the sleeping accommodation. The bungalow features three well-appointed bedrooms, offering ample space for relaxation and privacy.

The sitting/dining room to the left serves as the heart of the home, providing a welcoming space for gatherings or quiet evenings in. The kitchen is accessed from the dining area and is adorned with cream wall and base units with contrasting wooden worktops. There is space for a washing machine, under counter fridge freezer and a oven. There is a well equipped shower room with a separate toilet, ensuring functionality while enhancing the overall appeal.

Outside, the property benefits from a wraparound garden which envelopes the property, offering a serene outdoor retreat that is perfect for unwinding or entertaining. There is a large driveway providing parking for multiple vehicles.



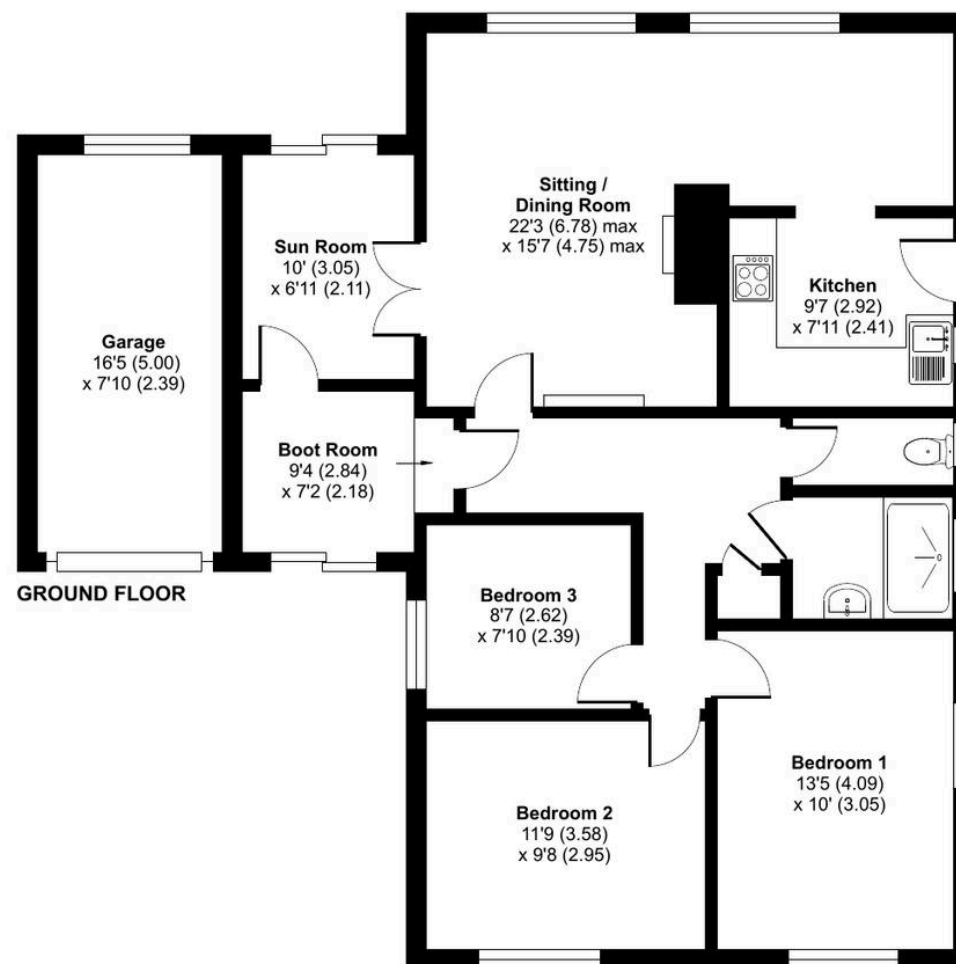
Plum Tree Close, Winscombe, BS25

Approximate Area = 999 sq ft / 92.8 sq m

Garage = 132 sq ft / 12.2 sq m

Total = 1131 sq ft / 105 sq m

For identification only - Not to scale



Floor plan produced in accordance with RICS Property Measurement Standards incorporating International Property Measurement Standards (IPMS2 Residential). © n|checon 2024.
Produced for Robin King LLP. REF: 1194574

Robin King

Robin King Estate Agents, 1-2 The Cross Broad Street - BS49 5DG

01934 876226 • post@robin-king.com • www.robin-king.com/

Sales particulars are for guidance only. No structural survey or service testing has been done. These details aren't part of a contract and shouldn't be relied on as facts. References to alterations or use don't confirm regulatory approval. Buyers must verify all information. Measurements are approximate; check them. Contact us with any important concerns before viewing.