



7 Acer Close, Warfield Park, Bracknell, RG42 3RF  
£375,000

 **HORLER**

## 7 Acer Close, Warfield Park, Bracknell, RG42 3RF

We have pleasure in bringing to the market this three bedroom, beautifully presented park home located on Warfield Park. The property comprises a large living room, kitchen/diner fully fitted with a range of eye and base level units and breakfast bar, main bedroom with ensuite shower room, further shower room and two more bedrooms. The secluded garden has a number of patio and seating areas, mature trees and shrubs and lawn, and to the front of the property is a garage with an adjacent brick paved drive with off street parking for a number of vehicles. Call today on 01753 621234 to book a viewing.



### **General Information**

Council Tax Band 'A'

Current Pitch Fee £324.84 per calendar month

Family Park

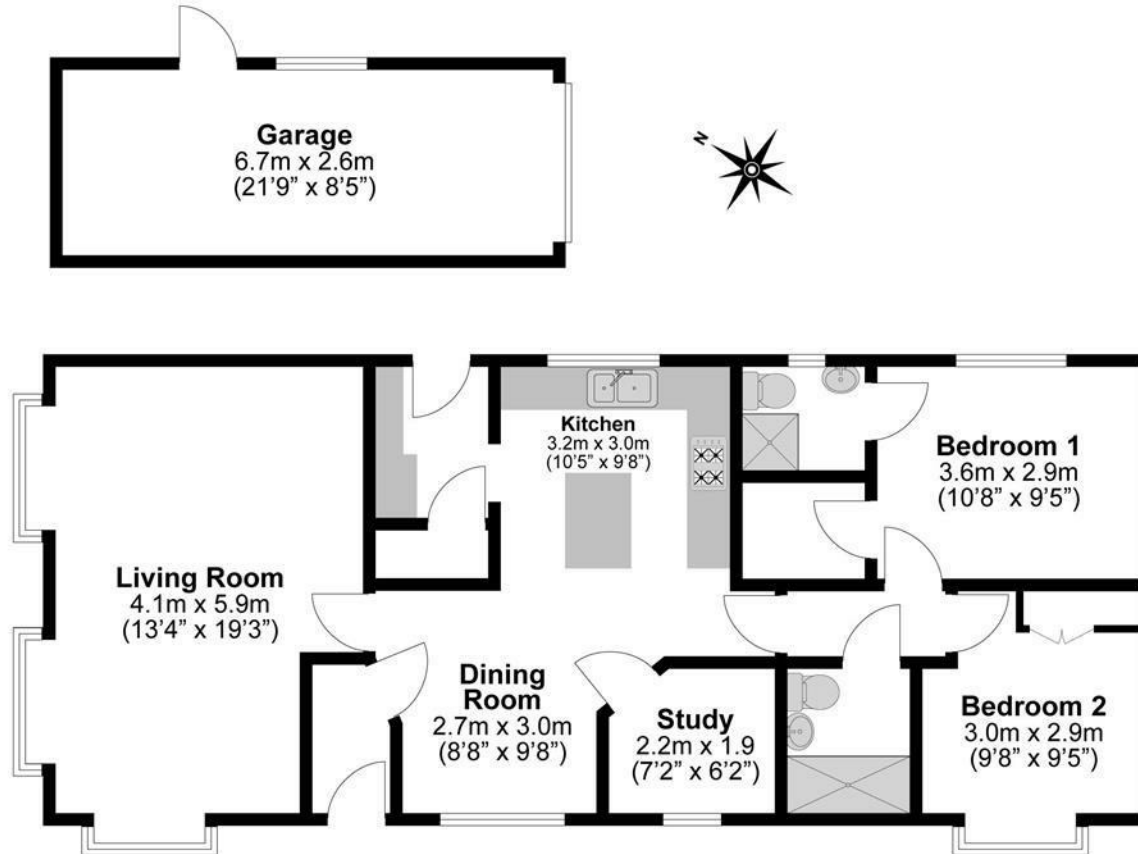
### **Legal Note**

\*\*\*Although these particulars are thought to be materially correct their accuracy cannot be guaranteed and they do not form part of any contract\*\*\*.





**Total Approximate Floor Area**  
1205 Square feet  
112 Square metres



**Illustrations are for identification purposes only,  
measurements are approximate, not to scale.**