



**The Old Stable Yard., 41A Parsonage Lane, Windsor, Berkshire, SL4 5EW**  
**£1,250,000**

 **HORLER**



## The Old Stable Yard., 41A Parsonage Lane, Windsor, Berkshire, SL4 5EW

Welcome to Parsonage Lane, Windsor - a truly exquisite property that exudes elegance and luxury. This detached house boasts 3 reception rooms, 5 bedrooms, and 3 bathrooms, an 'Italian Made' dressing room all recently built to an exacting standard that will surely impress even the most discerning buyer.



## Property Summary.

Welcome to Parsonage Lane, Windsor - a truly exquisite property that exudes elegance and luxury. This detached house boasts 3 reception rooms, 5 bedrooms, and 3 bathrooms, all recently built to an exacting standard that will surely impress even the most discerning buyer.

As you step inside, you are greeted by a soft, pretty facade of yellow brick that perfectly contrasts with the high-spec fixtures and fittings throughout. The bespoke kitchen, supplied and installed by Charles Yorke, features integrated Miele appliances and quartz worktops, making it a cook's dream. You can also enjoy the comfort of underfloor heating across the whole of the ground floor.

The bathrooms in this home are a true sanctuary, with Porcelanosa tiles, Hans Grohe sanitaryware, and underfloor heating, providing the ultimate in comfort and style. The property also boasts attractive UPVC sash windows and bifold doors that lead out to secluded gardens, surrounded by a secure brick wall perimeter.

Convenience is key with off-road parking for several cars, ensuring you never have to worry about finding a space. Despite its peaceful outlook, this property is just a short walk away from the town centre and the River Thames, offering the perfect blend of tranquillity and accessibility.

Don't miss out on the opportunity to own this stunning property in one of Windsor's most sought-after locations. Book a viewing today and experience the epitome of luxury living at Parsonage Lane and make the very most of living so close to one of Windsor's most sought-after schools.

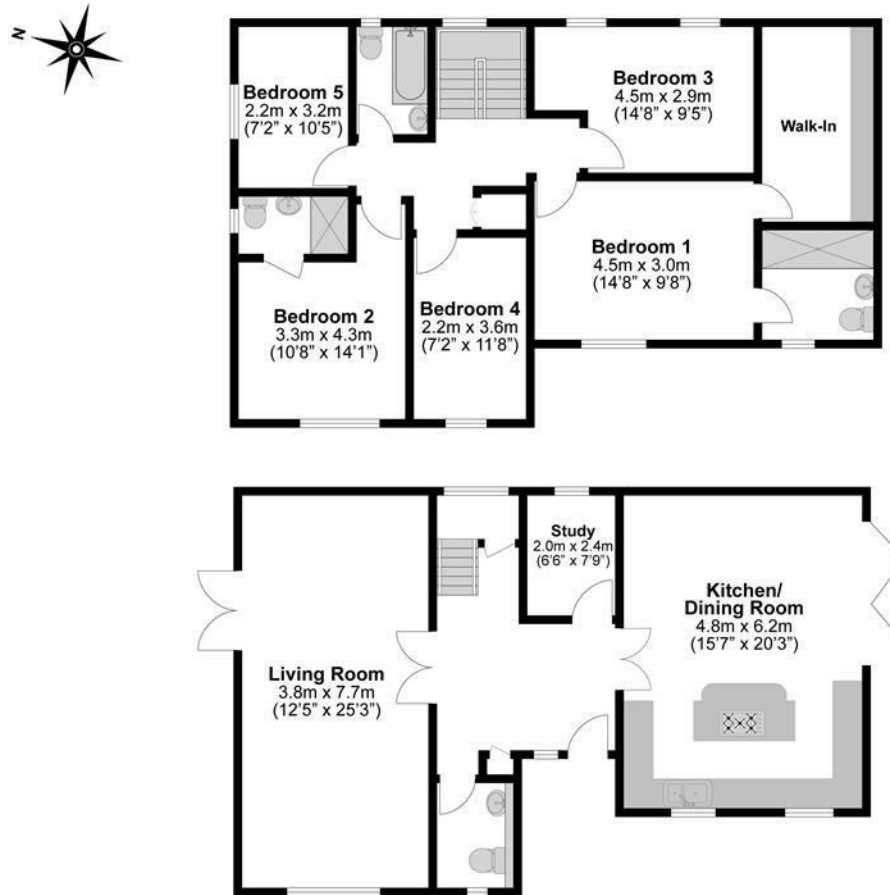












**Illustrations are for identification purposes only,  
measurements are approximate, not to scale.**