



**Apt 15 Deacon Court Dedworth Road, Windsor, SL4 4LW**  
**£299,950**

 **HORLER**

## Apt 15 Deacon Court Dedworth Road, Windsor, SL4 4LW

A beautifully presented first floor flat located in West Windsor and offering a fully integrated modern kitchen, two double bedrooms, a generous living/dining room with the addition of your own private balcony and family bathroom. This property benefits from being close to local shops and amenities; garage in block plus residents' parking and communal lawned gardens.

FOR VIEWINGS PLEASE CALL 01753 261234



### **Entrance/Hallway**

Through communal door with security entry phone system, stairs rising to first floor with partially glazed door to apartment and access to hallway with wood flooring, radiator and doors to living/dining room, kitchen, bedrooms 1 and 2 and family bathroom.

### **Living/Dining Room**

A beautifully presented living/dining room with side access UPVC double glazed window and door leading to outside balcony, fitted carpet, radiator, tv and power points.

### **Kitchen**

With side aspect UPVC double glazed window, a range of eye and base level units with complementary work surface, induction hob with overhead extractor fan and fitted oven, space for freestanding fridge/freezer, breakfast bar, wood flooring, power points and spotlights.

### **Bedroom1**

With side access UPVC double glazed window, radiator, fitted carpet and power points.

### **Bedroom 2**

With side access UPVC double glazed window, fitted carpet, radiator and power points.

### **Bathroom**

With side aspect frosted UPVC double glazed window, fitted bath, low level wc and vanity unit with wash basin. Wood flooring.

### **General Information**

Lease Remaining: Approx. over 140 years

Service Charge: Approx. £100 pcm

Council Tax Band C

### **Legal Note**

\*\*Although these particulars are thought to be materially correct, their accuracy cannot be guaranteed and they do not form part of any contract\*\*.

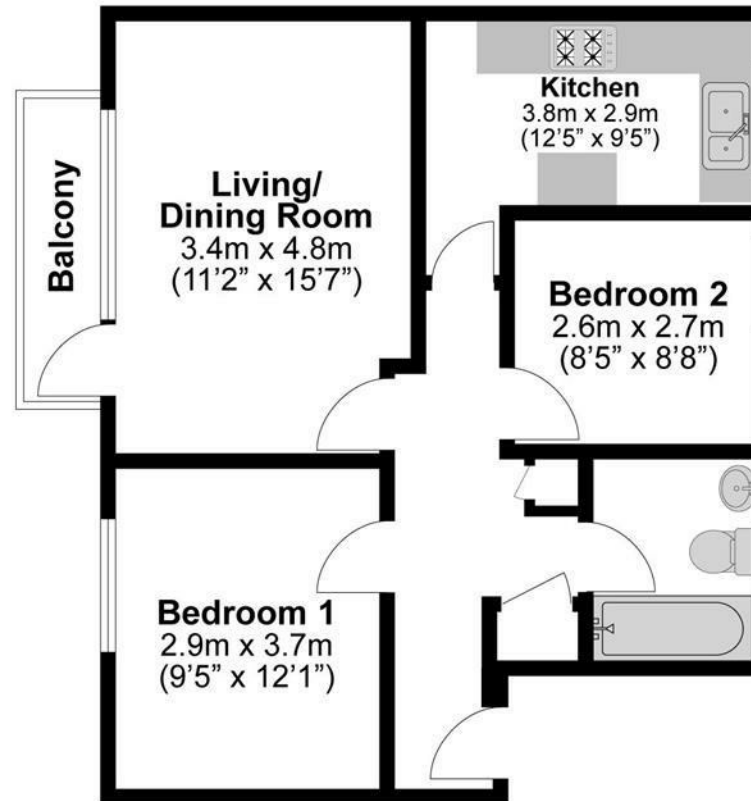
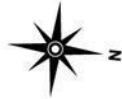




**Total Approximate Floor Area**

614 Square feet

57 Square metres



**Illustrations are for identification purposes only,  
measurements are approximate, not to scale.**