



11 Rydings, Windsor, SL4 4HF
Offers in excess of £525,000

 **HORLER**

11 Rydings, Windsor, SL4 4HF

Situated in the charming area of Rydings, Windsor, this delightful four-bedroom, 2 bathroom mid-terrace family home offers a perfect blend of comfort and convenience. Situated to the west of Windsor, the property is ideally located near local amenities, reputable schools, and excellent transport links, making it an attractive option for families and commuters alike.

Do not miss the chance to make this lovely property your own - call now on 01753 621234 to arrange a viewing.



Property Summary

Situated in the charming area of Rydings, Windsor, this delightful four-bedroom mid-terrace family home offers a perfect blend of comfort and convenience. Situated to the west of Windsor, the property is ideally located near local amenities, reputable schools, and excellent transport links, making it an attractive option for families and commuters alike.

Upon entering, you are welcomed into a spacious living room, providing an inviting space for family gatherings and entertaining guests. The fitted kitchen/diner boasts a range of eye and base level units, complemented by integral appliances that make cooking a pleasure. Additionally, a utility room with fitted units and a downstairs shower room enhance the practicality of the home, ensuring that everyday tasks are managed with ease.

The first floor features four well-proportioned family bedrooms, providing ample space for relaxation and personalisation; there is a family bathroom catering to the needs of a busy household.

Outside, the enclosed rear garden is a delightful retreat, predominantly laid to lawn, with a decking area adjacent to the property, perfect for alfresco dining or enjoying a quiet moment in the sun. The front of the property offers hard-standing for two vehicles, ensuring convenient parking for residents and visitors.

This well-appointed home in Windsor is an excellent opportunity for those seeking a family-friendly environment with easy access to all the amenities one could desire. Do not miss the chance to make this lovely property your own.

General Information

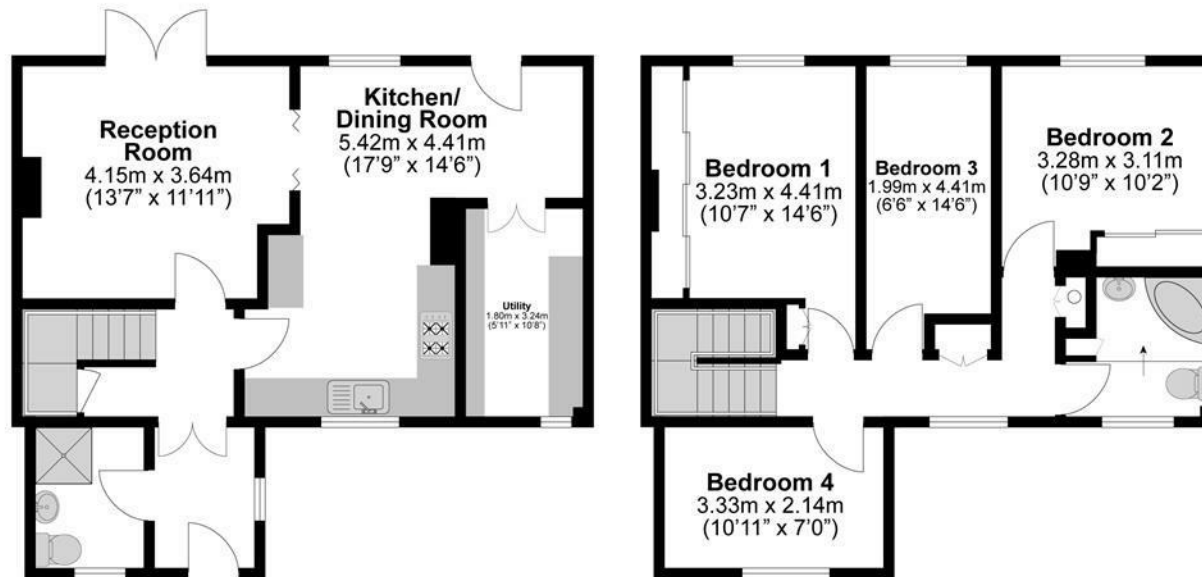
Council Tax Band 'D'

Legal Note

Although these particulars are thought to be materially correct their accuracy cannot be guaranteed and they do not form part of any contract







**Illustrations are for identification purposes only,
measurements are approximate, not to scale.**