



5 The Copse Cranbourne Hall, Winkfield, Windsor, SL4 4UH  
£200,000

## 5 The Copse Cranbourne Hall, Winkfield, Windsor, SL4 4UH

Nestled within the charming Cranbourne Hall Park in Winkfield, Windsor, this delightful two-bedroom double unit is now available for sale. This well-appointed home offers a perfect blend of comfort and convenience, making it an ideal choice for those seeking a peaceful retreat.



As you step inside, you will be greeted by a light and airy living room that creates a welcoming atmosphere, perfect for relaxation or entertaining guests. The spacious kitchen is well-equipped, providing ample space for culinary creations and family gatherings. Both bedrooms are generously sized, ensuring a restful night's sleep.

One of the standout features of this property is the garden, which backs onto picturesque fields where you can often see animals grazing. This rare treat offers a serene backdrop, allowing you to enjoy the beauty of nature right from your own outdoor space. Additionally, the property includes off-street parking and a detached garage, providing practical solutions for your storage and vehicle needs.

This home is truly a gem in a sought-after location, combining modern living with the tranquility of rural surroundings. Do not miss the opportunity to make this lovely property your own. Call today to arrange your viewing and experience all that this wonderful home has to offer.

#### **General Information:**

Council Tax Band: A

Pitch Fee: Approx 255 per month

Elec Split between all park residents

Family Park

Cats Allowed

Property approx 35 years old

#### **Legal Note:**

\*\*\*Although these particulars are thought to be materially correct their accuracy cannot be guaranteed and they do not form part of any contract\*\*\*



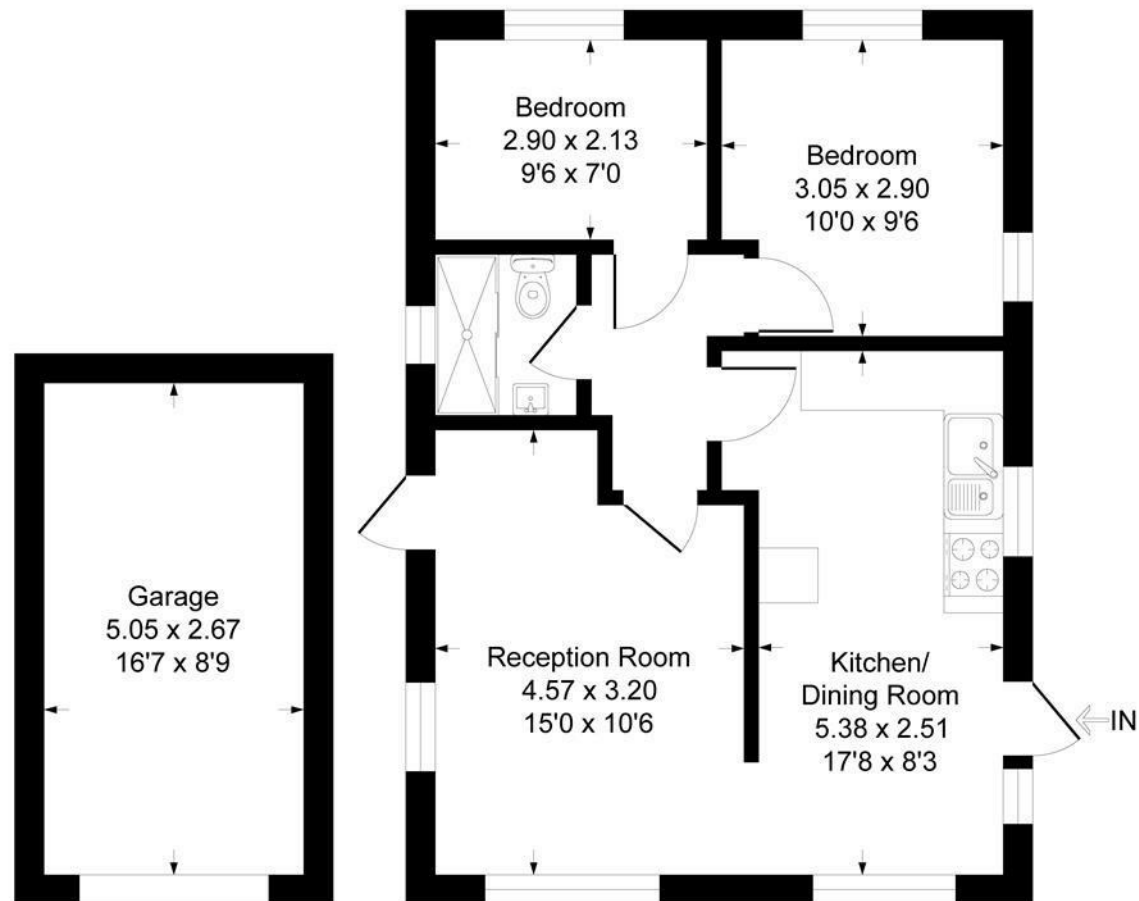


# The Copse SL4

Approximate Gross Internal Floor Area = 50.1 sq m / 540 sq ft

Garage Area = 13.5 sq m / 146 sq ft

Total Area = 63.6 sq m / 686 sq ft



## Garage

Illustration for identification purposes only, measurements are approximate, not to scale.  
Produced By Esjay Property Marketing