



26 Holly Crescent, Windsor, SL4 5SL
Offers in excess of £450,000

 **HORLER**

26 Holly Crescent, Windsor, SL4 5SL

Located in Holly Crescent to the west of Windsor, this delightful three-bedroom mid-terrace family home with integral garage offers a perfect blend of comfort and convenience. The property is ideally situated near local amenities, reputable schools, and excellent transport links, making it an attractive option for families and professionals alike.

Call today on 01753 621234 to arrange a viewing



Property Summary

Located in the charming Holly Crescent to the west of Windsor, this delightful three-bedroom mid-terrace family home offers a perfect blend of comfort and convenience. The property is ideally situated near local amenities, reputable schools, and excellent transport links, making it an attractive option for families and professionals alike.

Upon entering, you are greeted by a spacious living room that provides a warm and inviting atmosphere, perfect for relaxation or entertaining guests. The dining room, featuring elegant picture window overlooking the rear garden, seamlessly connects to the secluded rear garden, allowing for a delightful indoor-outdoor living experience. The fitted kitchen is well-equipped with a range of eye and base level units, along with integral appliances, ensuring that culinary enthusiasts will feel right at home with access to the rear garden through tope to bottom double glazed patio door.

The first floor comprises three well-proportioned bedrooms, each benefiting from built-in storage, providing ample space for personal belongings. The family bathroom is complemented by a separate WC, adding to the practicality of the layout.

The rear garden is a true sanctuary, featuring a paved area surrounded by mature trees and shrubs, creating a peaceful retreat for outdoor enjoyment. A charming corner summer house adds a touch of character and serves as an ideal spot for relaxation or hobbies.

To the front, the property boasts a brick-paved driveway leading to the integral garage, offering convenient off-street parking. This mid-terrace home is not only a wonderful living space but also a fantastic opportunity to enjoy the vibrant community of Windsor. With its appealing features and prime location, this property is sure to attract interest from discerning buyers.

Call today on 01753 621234 to arrange a viewing

General Information

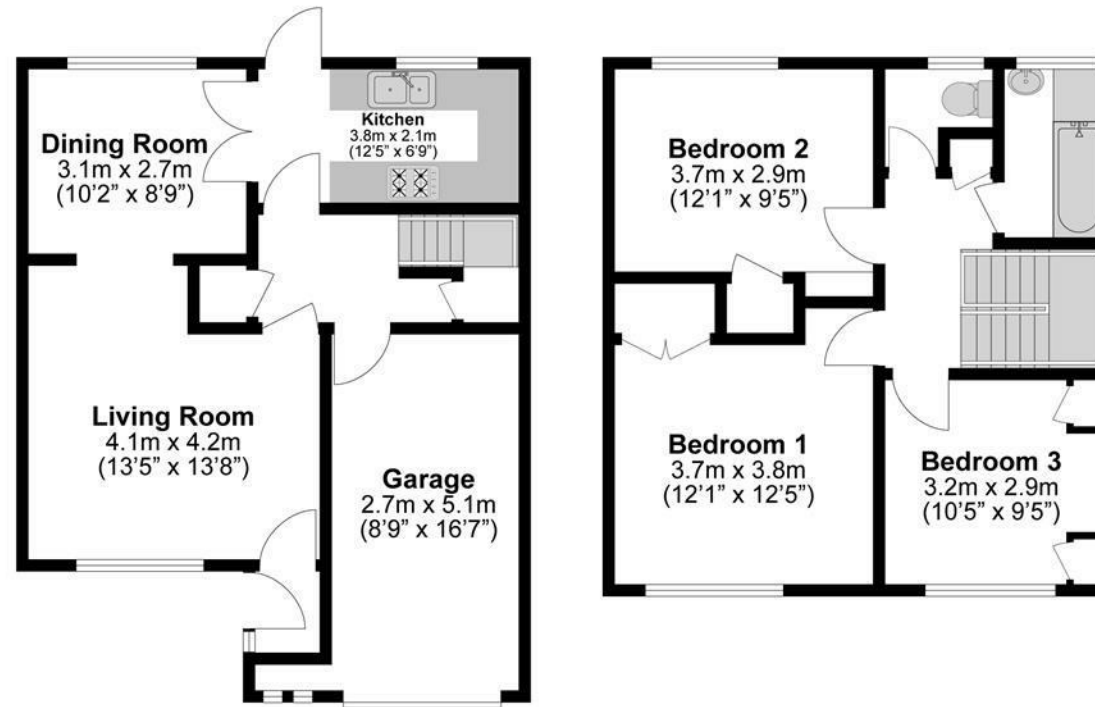
Council Tax Band 'E'

Legal Note

Although these particulars are thought to be materially correct their accuracy cannot be guaranteed and they do not form part of any contract







**Illustrations are for identification purposes only,
measurements are approximate, not to scale.**