



64 Forest Road, Windsor, Berkshire, SL4 4HU  
£475,000

 **HORLER**



## 64 Forest Road, Windsor, Berkshire, SL4 4HU

Situated in Forest Road, Windsor, this delightful end-of-terrace family home offers a perfect blend of comfort and convenience. With two/three bedrooms, this property is ideally suited for families seeking a welcoming environment close to local amenities, schools, and transport links.

Call today on 01753 621234 to arrange a viewing



## Property Summary

Situated in Forest Road, Windsor, this delightful end-of-terrace family home offers a perfect blend of comfort and convenience. With two/three bedrooms, this property is ideally suited for families seeking a welcoming environment close to local amenities, schools, and transport links.

Upon entering, you are greeted by a spacious living room that provides a warm and inviting atmosphere. The ground floor also features a well-appointed kitchen/diner, complete with a range of eye and base level units and integral appliances, making it a perfect space for family meals and entertaining. Adjacent to the kitchen is a lovely garden room, which boasts French doors that open directly into the private rear garden, allowing for a seamless indoor-outdoor living experience. Additionally, the ground floor includes a washroom and a utility area for added convenience.

The first floor comprises two generously sized double bedrooms, providing ample space for relaxation and rest. A family bathroom and a handy store cupboard complete this level. Ascending to the second floor, you will find a versatile loft room, which can serve as a third bedroom or a study, enhanced by Velux windows that flood the space with natural light.

The property is further complemented by a secluded rear garden, featuring a large studio, a well-maintained lawn, and a patio area, perfect for outdoor gatherings or quiet moments in the sun. To the front, off-road parking is available for two cars, along with side access to the rear garden.

This home presents an excellent opportunity for those looking to settle in a vibrant community while enjoying the comforts of modern living. Don't miss the chance to make this charming property your own.

Call 01753 621234 to arrange a viewing.

## General Information

Council Tax Band 'C'

## Legal Note

\*\*\*Although these particulars are thought to be materially correct their accuracy cannot be guaranteed and they do not form part of any contract\*\*\*.









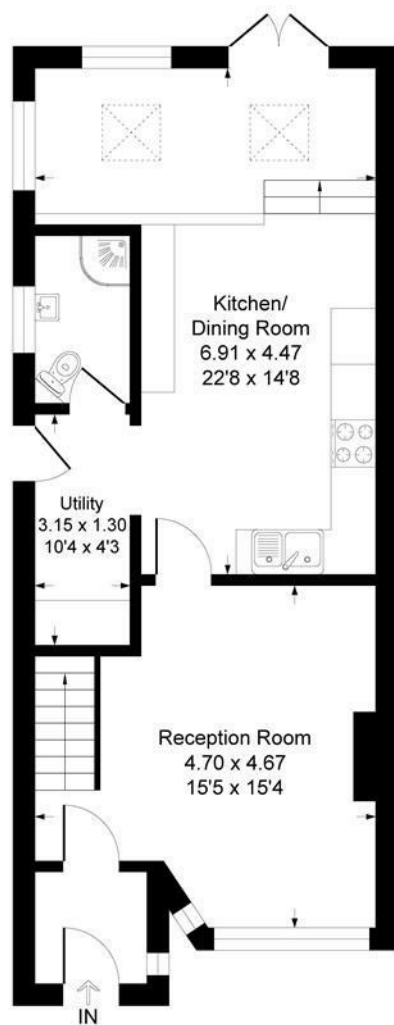


# Forest Road SL4

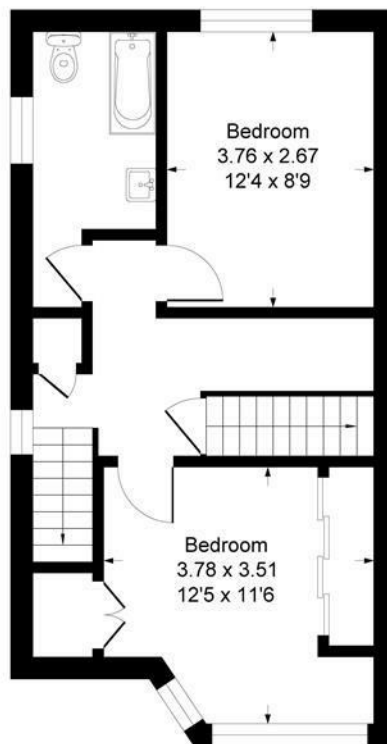
Approximate Gross Internal Floor Area = 109.8 sq m / 1182 sq ft

Outbuilding Area = 30.1 sq m / 324 sq ft

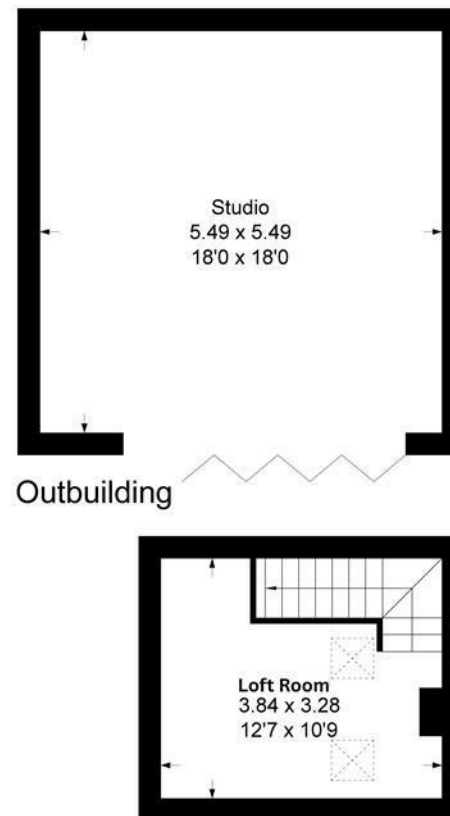
Total Area = 139.9 sq m / 1506 sq ft



Ground Floor



First Floor



Second Floor

Illustration for identification purposes only, measurements are approximate, not to scale.

Produced By Esjay Property Marketing