



2 Sefton Lodge Clewer Hill Road, Windsor, SL4 4FN
£295,000

 **HORLER**

2 Sefton Lodge Clewer Hill Road, Windsor, SL4 4FN

Nestled in the prestigious gated development of Sefton Lodge on Clewer Hill Road, Windsor, this exceptional two-bedroom ground floor apartment presents a wonderful opportunity for both first-time buyers and those seeking a comfortable home in a desirable location.



The property features two generously sized bedrooms, providing ample space for relaxation and rest. The open plan kitchen and dining area is perfect for entertaining guests or enjoying family meals, while the beautifully tiled bathroom adds a touch of elegance to the living space.

One of the standout features of this apartment is the allocated parking spaces, ensuring convenience for residents and their visitors. The location is particularly advantageous, as it is within walking distance to a variety of local amenities, including shops, cafes, and parks. Additionally, excellent transport links make commuting a breeze, and the presence of well-regarded local schools adds to the appeal for families.

This property is not just a home; it is a lifestyle choice, offering comfort, convenience, and a sense of community in one of Windsor's most sought-after areas. Whether you are looking to invest or settle down, this apartment is a must-see.

General Information:

Tenure: Leasehold

Council Tax Banding: D

Service Charge: £1500 per Annum

Ground Rent: £300 per Annum

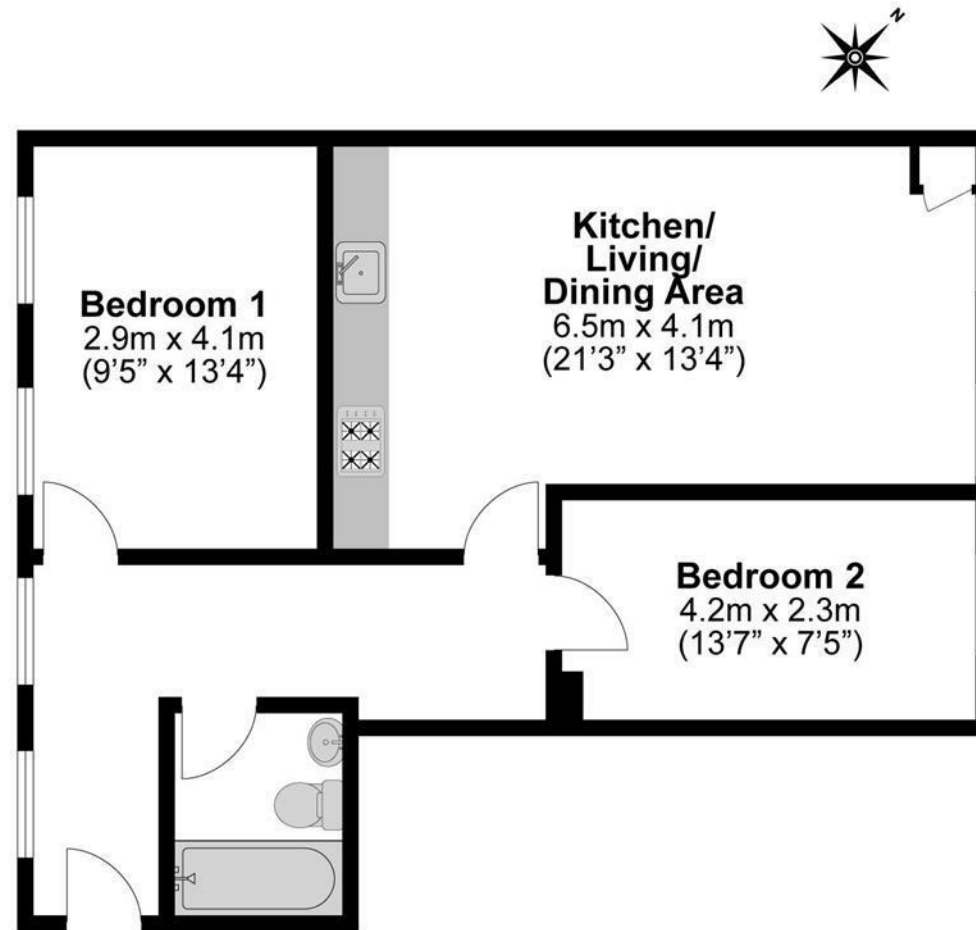
Lease remaining: 117 years remaining

Legal Note:

Although these particulars are thought to be materially correct their accuracy cannot be guaranteed and they do not form part of any contract.







**Illustrations are for identification purposes only,
measurements are approximate, not to scale.**