



12 the hermitage Warfield Street, Warfield, Berkshire, RG42 6AS
£137,500

12 the hermitage Warfield Street, Warfield, Berkshire, RG42 6AS

Located in the charming semi-rural village of Warfield, Bracknell, this delightful two-bedroom park home for the over 45's offers a perfect blend of comfort and modern living. Located on The Hermitage, this property is ideal for those seeking a peaceful retreat while still being conveniently close to local amenities.

Call today on 01753 621234 for viewings



Property Summary

Located in the charming semi-rural village of Warfield, Bracknell, this delightful two-bedroom park home offers a perfect blend of comfort and modern living. Located on The Hermitage, this property is ideal for those seeking a peaceful retreat while still being conveniently close to local amenities.

Upon entering, you are welcomed into an open plan living and breakfast room that seamlessly connects to a well-fitted kitchen. The kitchen boasts integrated appliances and a range of eye and base level units, providing both functionality and style for your culinary adventures. The spacious layout is perfect for entertaining guests or enjoying quiet evenings at home.

The park home features two generously sized double bedrooms, ensuring ample space for relaxation and rest. A family bathroom completes the accommodation, offering convenience and comfort for everyday living.

Outside, the property benefits from an enclosed garden, predominantly laid to lawn, providing a lovely outdoor space for gardening or simply enjoying the fresh air. Additionally, a metal shed offers practical storage solutions, while parking for two vehicles ensures that you and your guests have easy access.

This property is a wonderful opportunity for those looking to embrace a tranquil lifestyle in a picturesque setting. With its modern amenities and inviting atmosphere, this park home is not to be missed.

General information

Semi Retirement park over 45's

Pets and dogs welcome, maximum of 2

Site fees: TBC

Gas bottles

Council Tax Band 'A'

Legal Note

Although these particulars are thought to be materially correct their accuracy cannot be guaranteed and they do not form part of any contract





The Hermitage RG42

Approximate Gross Internal Floor Area = 60.8 sq m / 655 sq ft

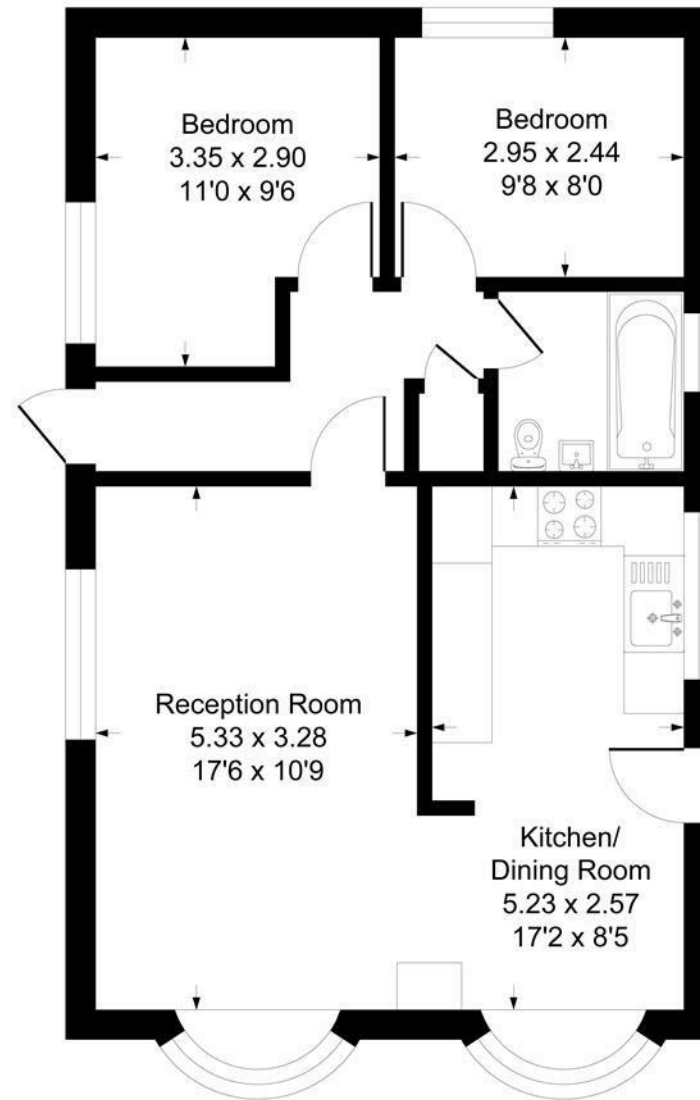


Illustration for identification purposes only, measurements are approximate, not to scale.
Produced By Esjay Property Marketing