



Hawthorn Roses Lane, Windsor, Berkshire, SL4 4JU
£745,000

 **HORLER**

Hawthorn Roses Lane, Windsor, Berkshire, SL4 4JU

Nestled in the heart of West Windsor, this exquisite four-bedroom detached family home on Roses Lane is a true gem. Recently refurbished to a high standard, the property features a stunning open-plan design on the ground floor with under floor heating controlled via smart devices, creating a bright and inviting space perfect for modern living. The bifold doors seamlessly connect the interior to the garden, allowing for an abundance of natural light and a lovely view of the outdoor area.



The home comprises four generously sized bedrooms, two of which boast en-suite facilities, providing both comfort and privacy for family members or guests. The principal bedroom is particularly impressive, featuring a spacious walk-in wardrobe that adds a touch of luxury to everyday living.

Outside, the property offers a partially laid lawn and a charming patio seating area, ideal for enjoying al fresco dining or simply relaxing in the sun. Additionally, there is ample off-street parking available for multiple vehicles, ensuring convenience for residents and visitors alike.

Situated on a quiet private road, this home is perfectly positioned within walking distance to a variety of amenities, well-regarded schools, and excellent transport links. This property is not just a house; it is a wonderful family home that combines modern comforts with a desirable location. Don't miss the opportunity to make this delightful residence your own.

General Information:

Tenure: Freehold

Council Tax Banding: E

Legal Note:

Although these particulars are thought to be materially correct their accuracy cannot be guaranteed and they do not form part of any contract.





Roses Lane SL4

Approximate Gross Internal Floor Area = 136.2 sq m / 1466 sq ft

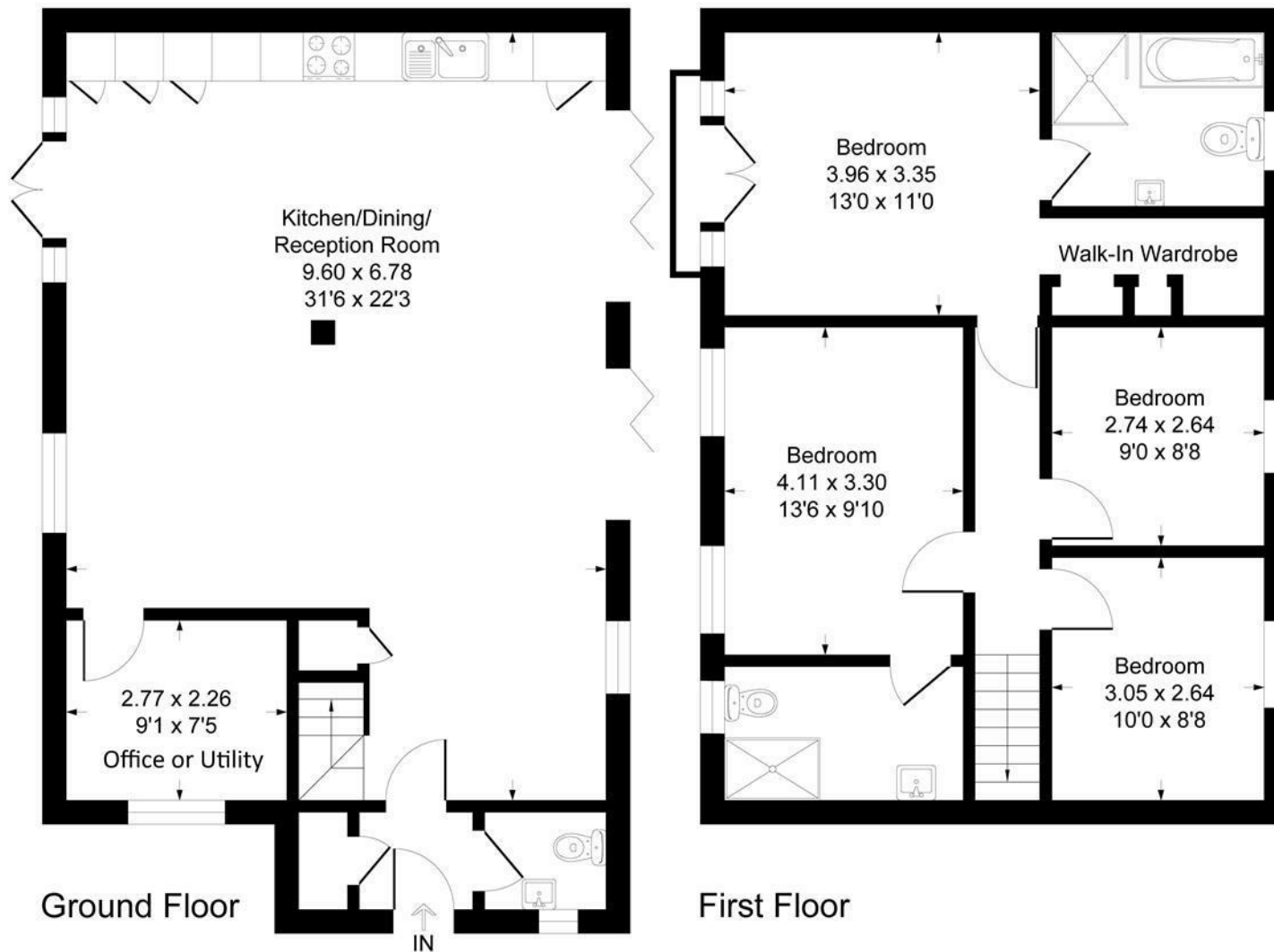


Illustration for identification purposes only, measurements are approximate, not to scale.
Produced By Esjay Property Marketing