



56 Severn Crescent, Slough, SL3 8UX
£495,000

 **HORLER**

56 Severn Crescent, Slough, SL3 8UX

Welcome to this charming 3 bed mid-terrace house located on Severn Crescent in Slough. The property offers a large living room with open-plan kitchen and dining area as well as a downstairs shower room.



Property Summary

Welcome to this charming mid-terrace house located on Severn Crescent in Slough, perfect for families seeking a comfortable and convenient home. This delightful property boasts three well-proportioned bedrooms, making it an ideal choice for those looking to settle down in a friendly neighbourhood.

As you enter, you are greeted by a spacious living room that offers a warm and inviting atmosphere, perfect for relaxation and family gatherings. The open-plan kitchen and dining area is a standout feature, equipped with integral appliances and enhanced by French doors that lead directly to the secluded rear garden. This seamless connection between indoor and outdoor spaces is perfect for entertaining or enjoying a quiet moment in the fresh air.

On the first floor, you will find three bedrooms, each providing ample space for rest and personalisation. The family bathroom is conveniently located nearby, along with a storage cupboard to help keep your home organised and clutter-free.

The rear garden is fully paved, offering a low-maintenance outdoor space that includes a wooden shed for additional storage and a rear access gate for convenience. At the front of the property, a paved driveway provides parking for two cars, ensuring that you and your guests have easy access.

Situated close to local amenities, schools, and transport links, this property is well-positioned for both convenience and community living. Do not miss the opportunity to make this lovely house your new home. To arrange a viewing, please call 01753 621234 today.

General Information

Council Tax Band 'C'

Legal Note

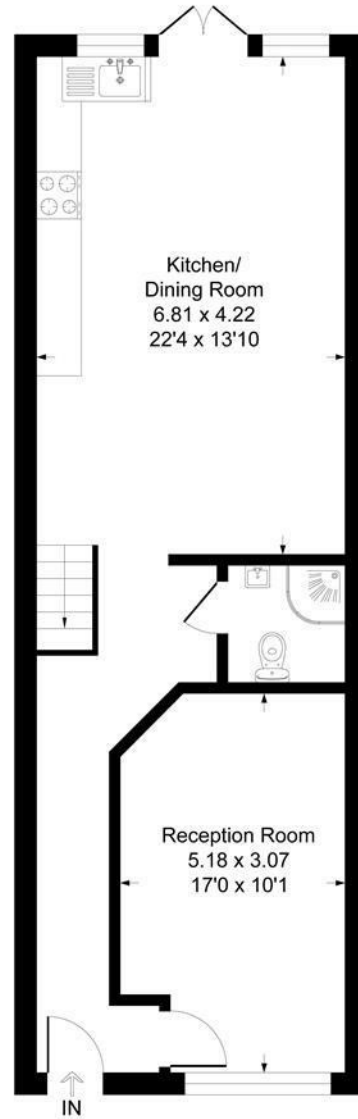
Although these particulars are thought to be materially correct their accuracy cannot be guaranteed and they do not form part of any contract.



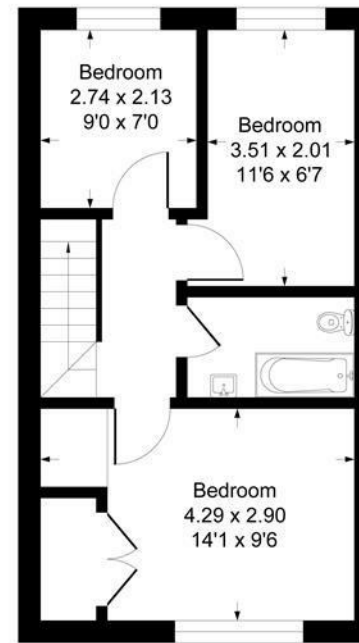


Severn Crescent SL3

Approximate Gross Internal Floor Area = 93.2 sq m / 1004 sq ft



Ground Floor



First Floor

Illustration for identification purposes only, measurements are approximate, not to scale.
Produced By Esjay Property Marketing