



16 Trent Road, Slough, SL3 8AP
£425,000

 **HORLER**

16 Trent Road, Slough, SL3 8AP

Located on Trent Road in Slough, this well presented three-bedroom mid-terrace family home offers comfort and convenience and is Ideally situated close to local amenities and schools.



Property Summary

Located on Trent Road in Slough, this delightful three-bedroom mid-terrace family home offers a perfect blend of comfort and convenience. Ideally situated close to local amenities and reputable schools, this property is perfect for families seeking a welcoming community.

Upon entering, you are greeted by a spacious open-plan living and dining area, which provides an inviting space for relaxation and entertaining. This area seamlessly flows into a well-fitted kitchen, complete with a door that leads directly to the rear garden, making it easy to enjoy al fresco dining or simply unwind in the fresh air.

The first floor boasts three generously sized bedrooms, providing ample space for family members or guests. A modern family shower room serves this level, ensuring that daily routines are both practical and comfortable.

The fully enclosed rear garden features a patio area adjacent to the house, perfect for summer gatherings, alongside a well-maintained lawn that offers a safe space for children to play. Additionally, a rear access gate adds convenience for those who may wish to utilise the garden for various activities.

To the front of the property, you will find an open green space, enhancing the overall appeal of the location. For those in need of extra storage or parking, a garage is available in a nearby block.

This property is a wonderful opportunity for anyone looking to settle in a vibrant area of Slough. To arrange a viewing, please do not hesitate to call us at 01753 621234.

General Information

Council Tax Band 'C'

Legal Note

Although these particulars are thought to be materially correct their accuracy cannot be guaranteed and they do not form part of any contract.





Trent Road SL3

Approximate Gross Internal Floor Area = 71.2 sq m / 766 sq ft

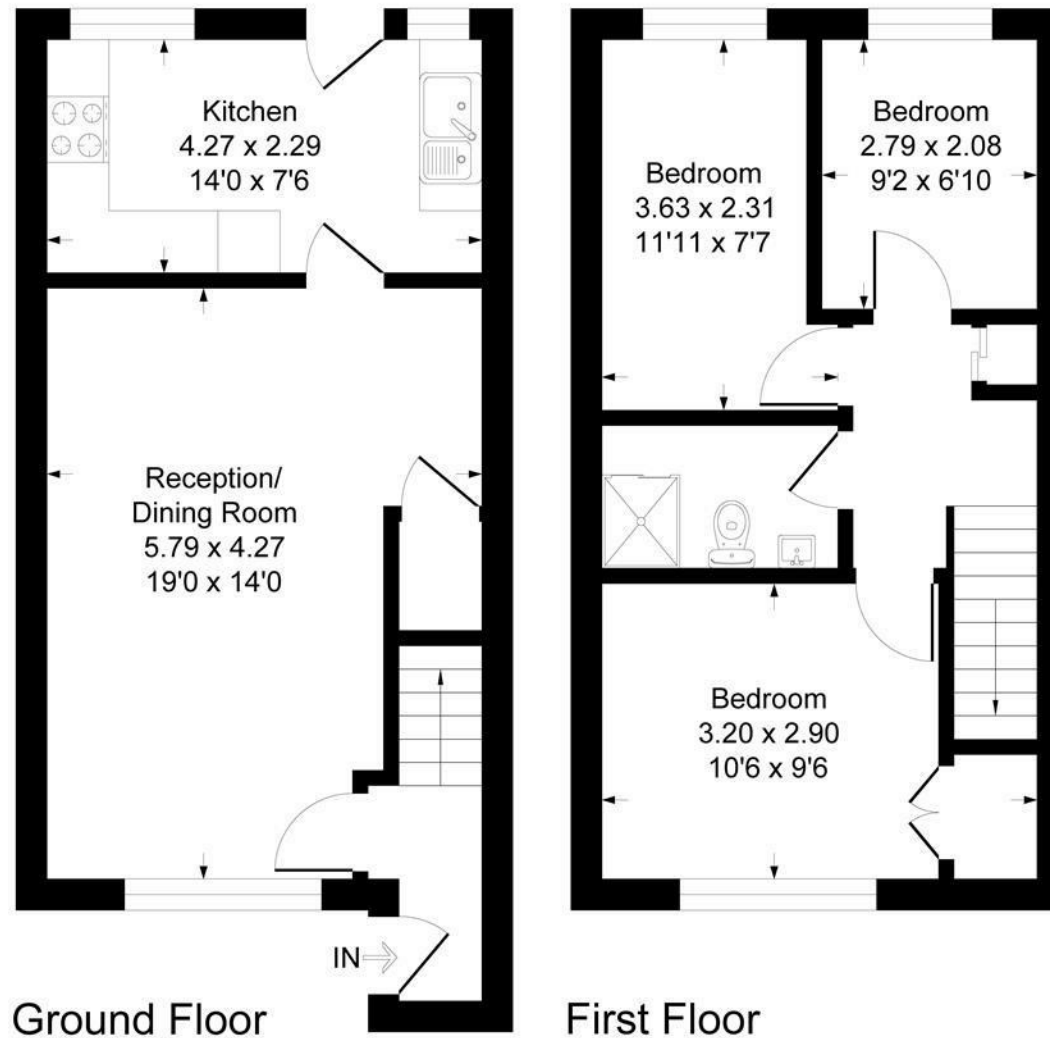


Illustration for identification purposes only, measurements are approximate, not to scale.
Produced By Esjay Property Marketing