



5 Andermans, Windsor, SL4 5RN
£650,000

 **HORLER**

5 Andermans, Windsor, SL4 5RN

Situated in Andermans, to the west of Windsor, this three-bedroom detached house offers a perfect blend of comfort and convenience. The property is located near local schools, amenities, and transport links.



Property Summary

Approaching the property from the private driveway you will enter via a glazed porch area and onwards through the front door. You are welcomed by a spacious hallway with access to downstairs cloakroom/wc, living room, kitchen, and stairs. The living room with large bay window to the front seamlessly flows into a dining area, with sliding patio doors that open onto a large, secluded rear garden. This outdoor space is perfect for entertaining or simply enjoying a quiet afternoon in the sun. The kitchen is well-appointed with both eye and base level units, complete with integral appliances and a side door that provides easy access to the garden.

The first floor boasts three generously sized bedrooms, each offering ample space for relaxation and personalisation. A family bathroom serves this level, ensuring convenience for all residents.

Set on a corner plot, the property features a very large rear garden that provides a private retreat from the hustle and bustle of daily life. Additionally, there is a detached single garage, large timber shed/workshop and a front garden laid to lawn, complemented by a driveway that accommodates off-road parking for two cars.

This home is a wonderful opportunity for those seeking a peaceful yet accessible location in Windsor. For viewings, please do not hesitate to call 01753 621234.

General Information

***Council Tax Band F'

Legal Note

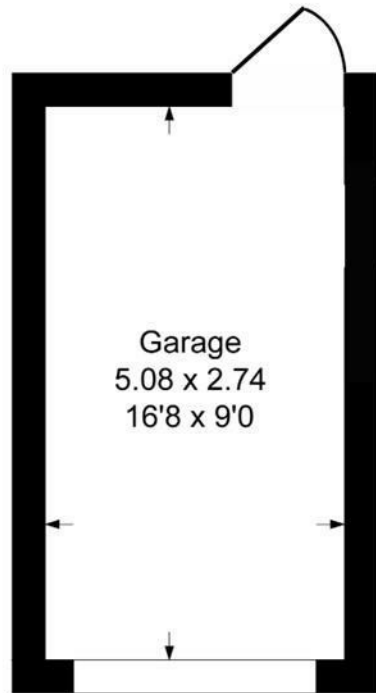
Although these particulars are thought to be materially correct their accuracy cannot be guaranteed and they do not form part of any contract.



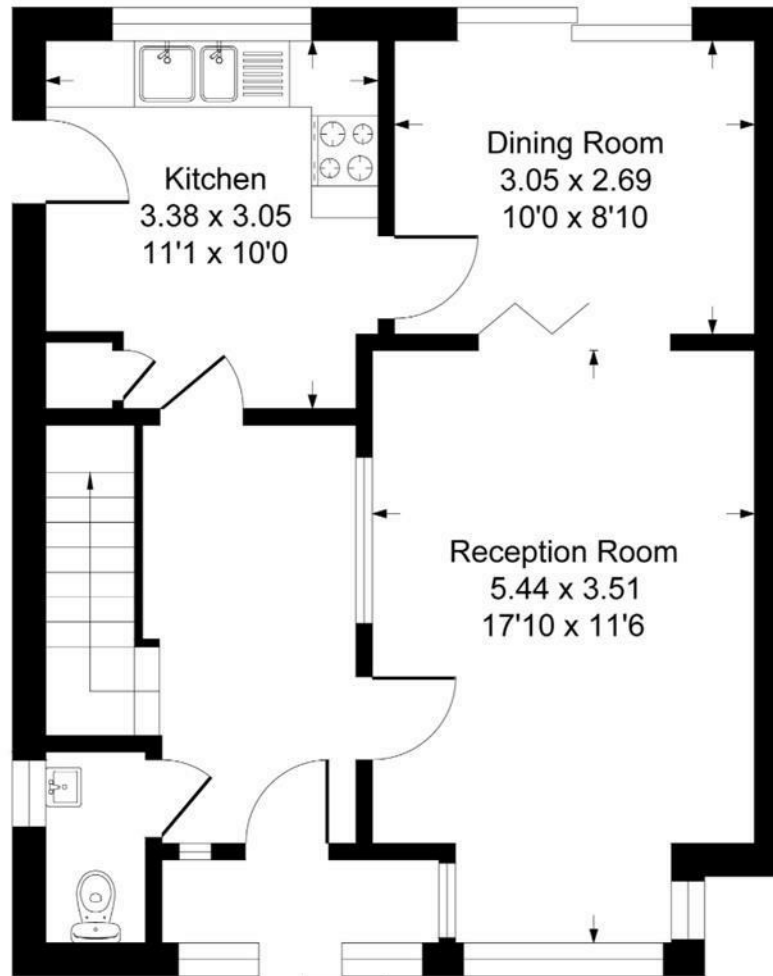


Andermans SL4

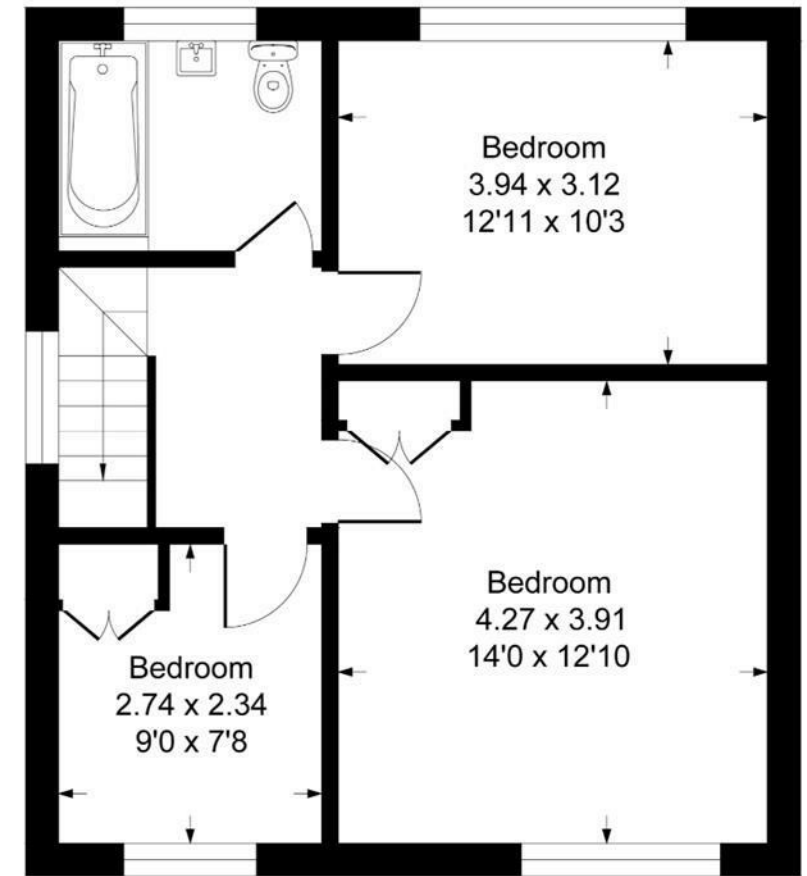
Approximate Gross Internal Floor Area = 115.0 sq m / 1238 sq ft



Garage



Ground Floor



First Floor

Illustration for identification purposes only, measurements are approximate, not to scale.
Produced By Esjay Property Marketing